



Cefor

# THE 2015 CEFOR NOMIS COASTAL HULL REPORT

(SMALL CRAFT & FISHING VESSELS)

Nordic Marine Insurance Statistics as of 31 December 2015

# DATA INCLUDED IN THE COASTAL HULL REPORT

- Underwriting years 1996-2015
- All vessels
  - of type «fishing»
  - $\leq 5,000$  gross ton or  $\leq 15$ m length  
(but excluding supply/offshore vessels; for these and all larger tonnage see:  
«The 2015 Cefor NoMIS ocean hull report)
- If not indicated otherwise, figures are presented
  - In Norwegian kroner NOK
  - on accident year basis  
(claims allocated to the calendar year in which the claim occurred).
  - as reported by 31 December 2015  
(i.e. without IBNR loading for claims not yet registered or incurred by this date).

# 2015 NOMIS – COASTAL HULL – PART 1

AS OF 31 DECEMBER 2015

Part 1 Introduction (Contents / NoMIS history / Data definitions)

Part 3 Key figures – NoMIS “Coastal” portfolio overview

Part 4 Key figures – Age group

Part 5 Key figures – Vessel type group

Part 6 Key figures – Size group gross ton

Part 7 Key figures – Special Vessel type & Size groups

Part 8 Key figures – Sum Insured layers

(Part 4-8: Distribution by no. of vessels / Claim frequency / Claim cost per vessel & per Sum Insured / Av. Claim cost)

Part 9 Key figures – Fishing vessels

**Legal disclaimer** Cefor provides the statistics material in this presentation for general information purposes only. All key figures are derived from the Cefor portfolio, which reflects a minor part of the world fleet, the selection of ships being biased by Nordic underwriting preferences. Therefore Cefor can accept no responsibility and shall not be liable for any loss which may arise from reliance upon the information provided.

With reference to [Commission Regulation \(EU\) No 267/2010 of 24 March 2010](#) (EU Block Exemption), it is further stressed that the statistical data presented in this publication is non-binding in its character.

# 2015 NOMIS – COASTAL HULL – PART 1

AS OF 31 DECEMBER 2015

The **Nordic Marine Insurance Statistics (NoMIS)** is a joint database project of Cefor members active on the Hull & Machinery market to compile insurance data and vessel characteristics for statistical purposes. The database is administered by Cefor.

From its foundation in 1985 until 1997, the data was compiled by appointing Cefor a facultative reinsurer to which members of the Norwegian Hull Agreement ceded 0.1% of their H&M insurance. Premium and claims information was exchanged via Borderaux, the lead insurer providing details of each claim.

In 1996, the hull agreement was discontinued, but the statistics cooperation continued.

In 1998, steps were taken to update the NoMIS' database electronically. This was in place December 1999, enabling Cefor to produce up-to-date hull figures on a monthly basis, and extending the database substantially by including non-lead business.

In 2000, the database was extended to update business back to underwriting year 1995 electronically. In the following years, data from several new major CEFOR members was integrated, incl. retrospective data from 1995 uw year.

In 2009, in addition to the traditional ocean hull portfolio, the complete coastal hull portfolio of the participating NoMIS members was integrated into the NoMIS database.

In 2012, new data from Alandia dating back to underwriting year 2005 was integrated, and If extended their scope of reporting to include all Nordic business.

Recently, the reporting format was modernized and the database migrated to a new technical platform.

By 31st December 2015, in all 136,571 vessel years and 27,179 claims were registered on underwriting years 1985 through 2015 for the “coastal” portfolio including small craft and fishing vessels (see definition on front page).

The NoMIS statistics in this report comprise mainly data from the following marine insurers: Alandia, Codan, Gjensidige, If, Gard, NEMI (until 2009), Norwegian Hull Club, Tryg (until 2008) and mutual coastal hull clubs.

# 2015 NOMIS – COASTAL HULL – PART 1

AS OF 31 DECEMBER 2015

## **All amounts are presented in NOK!**

Rate of exchange applicable to convert the figures from the original currencies into NOK:

Insured values: av. rate of exchange of the month the insurance coverage gets into force

Paid claims: av. rate of exchange of the month of the payment transaction

Outstanding claims: av. rate of exchange of December 2015

Underwriting year = year in which the insurance policy attaches

All claims are net of any applicable deductibles.

Total Claims = Paid claims + Outstanding claims

TLO (total losses) = claims in excess of 75% of the Sum Insured

Partial Losses = all claims  $\leq$  75% of the Sum Insured

IBNR ("Incurred but not reported") = reserve for claims adjustments and registration backlog

# 2015 NOMIS – COASTAL HULL – PART 1

AS OF 31 DECEMBER 2015

## Types of vessels specified

<u>Vessel Type group</u>	<u>Vessels Types included</u>	<u>Lloyd's List Intelligence</u>
BULK <sup>1)</sup>	Bulk, Ore, Cement	BAC, BBU, BCB, BCE, BOR, BWC
CAR/RORO <sup>3)</sup>	Car Carrier, RoRo	MVE, URC, URR
CARGO <sup>1)</sup>	Dry Cargo, General Cargo, Reefers, Pallett Vessels, Animal Transport Vessels	GCT, GGC, GPC, GRF, MLV
CHEM./PRODUCT <sup>2)</sup>	Chemical Carriers, Product / Acid / Edible Oil / Fish Oil / Fruit Juice / Wine / Molasses / Waste/ Water Tankers	TAC, TCH, TCO, TEO, TFJ, TFO TMO, TPD, TWA, TWN, TWT
CONTAINER <sup>1)</sup>	Container	UCC, UCR
FISHING	Fishing vessels	FFC, FFF, FFP, FFS, FTR,FWF,FWH
LNG/LPG <sup>2)</sup>	Gas Carriers LNG, LPG, LNG/LPG	LBK, LCN, LNG, LPG, LNP
OBO <sup>2)</sup>	Combined Vessels Bulk, Ore, Oil	COO, CBO
OTHER <sup>3)</sup>	any other ships and floating units, any codes not specifically defined otherwise, like Barges, Cranes, Floating Storage, Floating Production, Pollution Control Vessels, Mud boat, Research vessels, Cable, Seismic Search vessel, Flo/Flo, etc.	

# 2015 NOMIS – COASTAL HULL – PART 1

AS OF 31 DECEMBER 2015

## Types of vessels specified contd.

<u>Vessel Type group</u>	<u>Vessels included</u>	<u>Lloyd's List Intelligence</u>
PASSENGER	All types of passenger vessels and ferries, Passenger/Roro, Highspeed Craft	LOF, LOP, MPR, OFY, OHF, OHS PRR, PZZ
SUPPL./OFF. <sup>4)</sup>	Supply, Anchorhandling, Standby, Drilling Vessel, General Service Vessel, Supply (Tug, Anchor), Tug/Icebreaker	OBS, OBT, ODS, OIB, OIF, OIS, OIT, OLT, OMN, OMT, OOS, OPP, ORP, OSU, OSY, OSZ, OWO, XAA, XAF, XAG, XAH, XAT, XCT, XFF, XFS, XFT, XPT, XTG, XTI, XTP, XTR, XTS, XTT, XTX
TANK <sup>2)</sup>	Tanker, Sludge Vessel, Crude Oil Tanker Asphalt Carriers, Bunkering Tanker, Naval Auxiliary	OSC, OTC, TAS, TBK, TCR, TNA, TRR, TTA, TUV

For the purpose of the coastal statistics, above vessel types are grouped at a higher level as follows:

1) defined as "CARGO"

2) defined as "TANK"

3) defined as "OTHER"

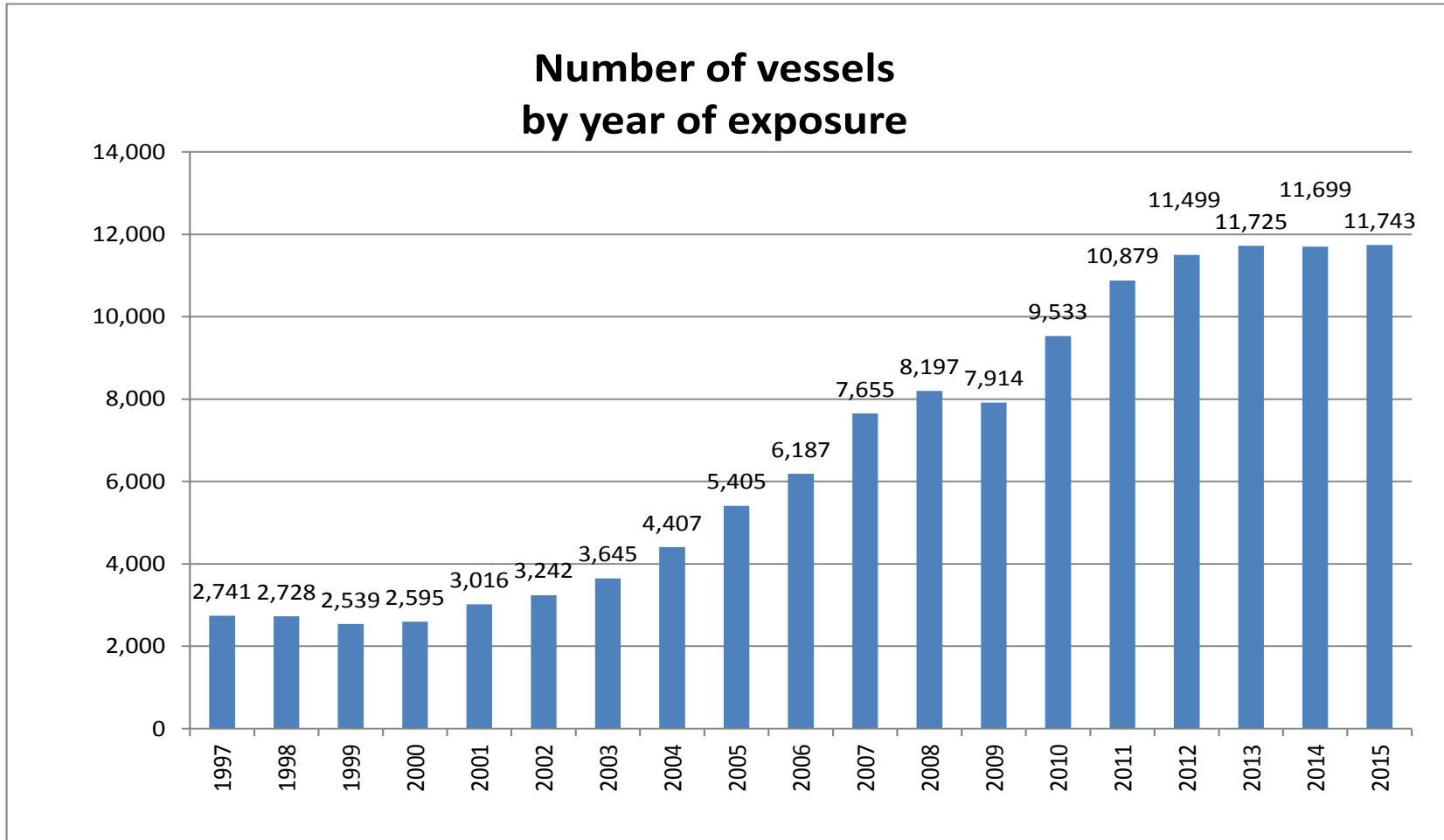
4) excluded from this report. For Supply/Offshore, see OCEAN hull report.

Excluded from the statistics in this report are the following offshore energy units:

LFP, LFR, LFS, LGP, LPS, TPD, TFP, TFS, YDP, YDS

# 2015 NOMIS – COASTAL HULL – PART 3

AS OF 31 DECEMBER 2015



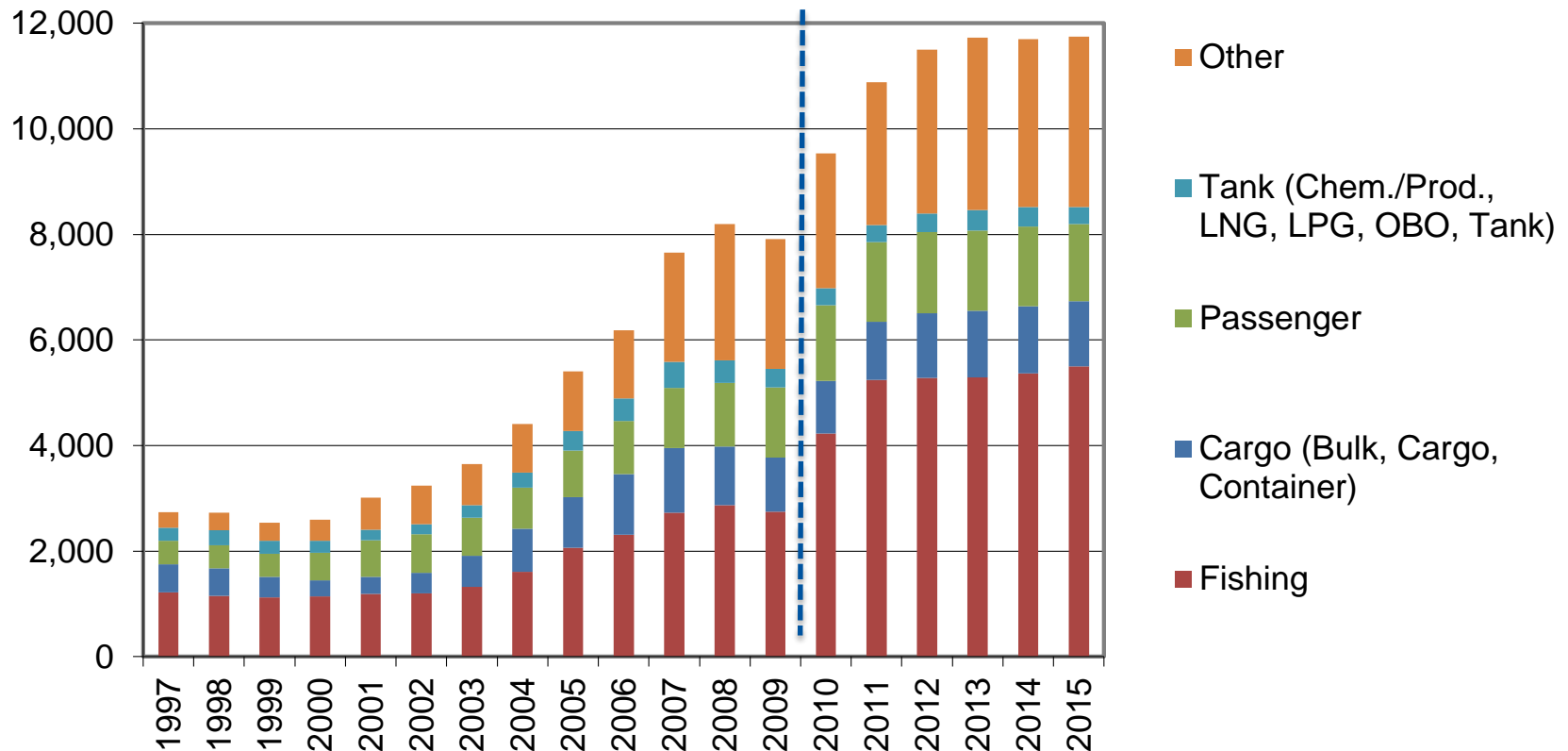
Above numbers include all vessels of type «fishing» and all vessels  $\leq 5000$  gross ton or  $\leq 15$ m length, with the exception of «Supply/Offshore» vessels, which are part of the ocean hull report.



# 2015 NOMIS – COASTAL HULL – PART 3

AS OF 31 DECEMBER 2015

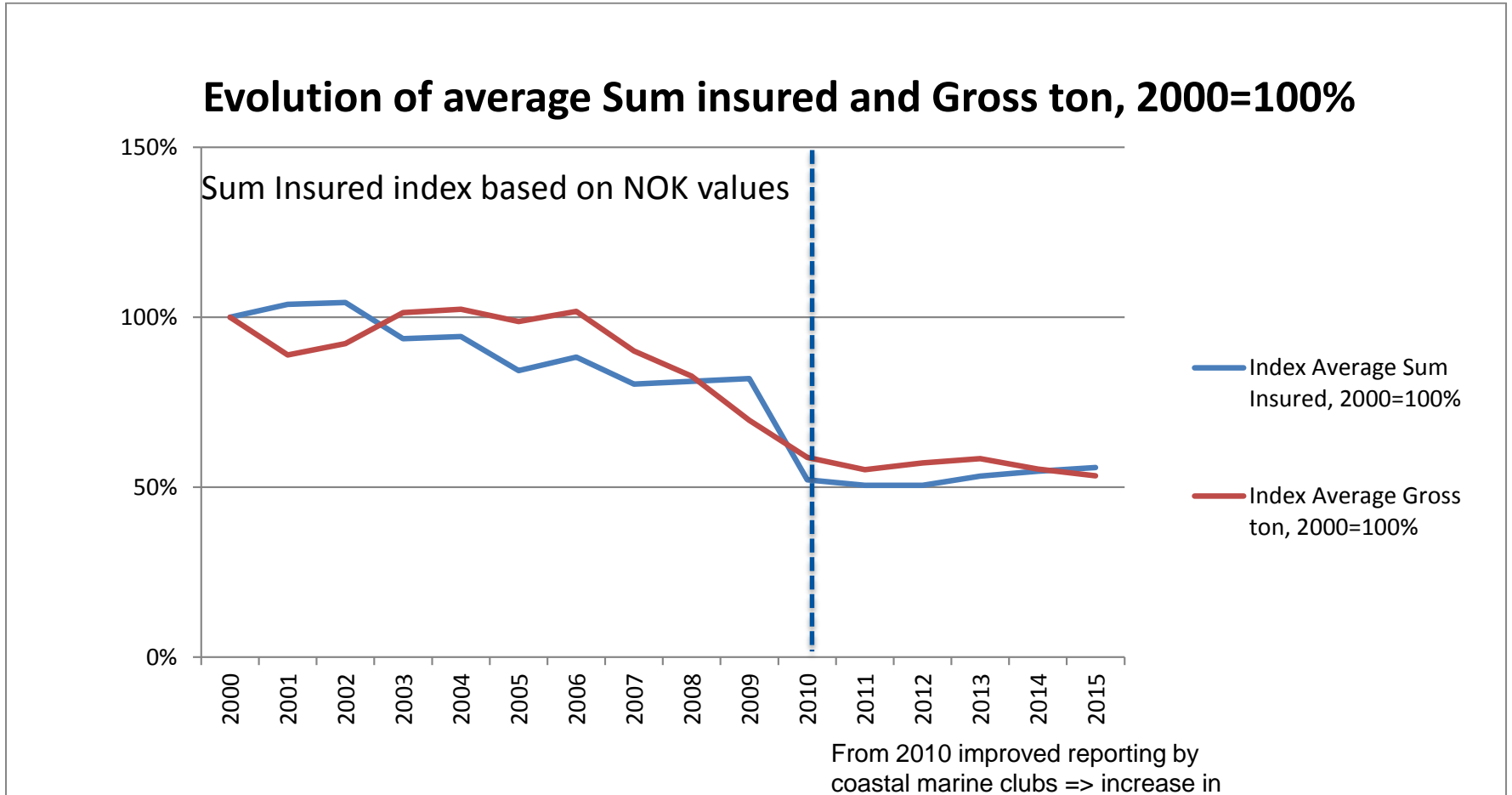
## Number of vessels by type by year of exposure



From 2010 improved reporting by coastal marine clubs => increase in number of minor fishing vessels

# 2015 NOMIS – COASTAL HULL – PART 3

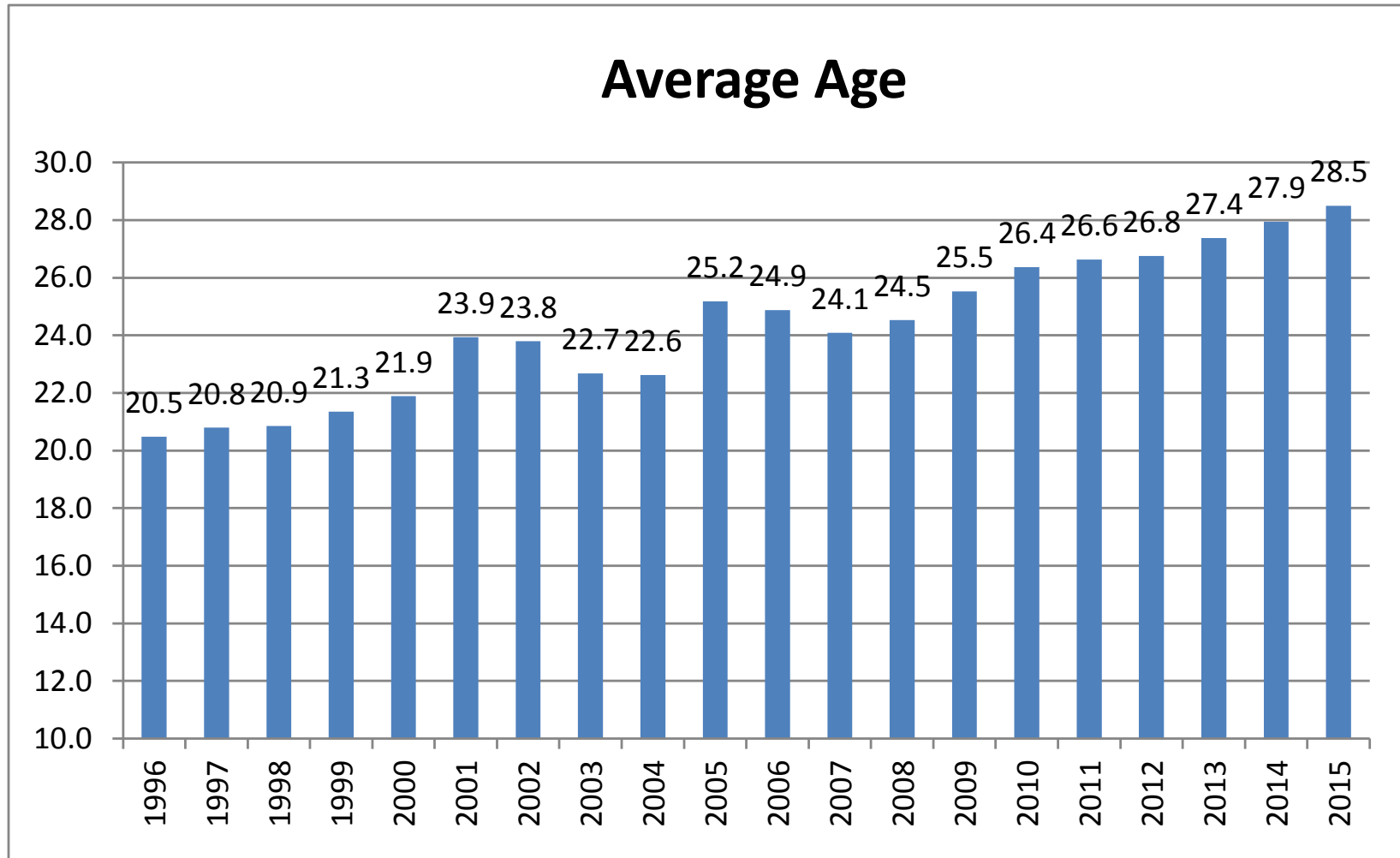
AS OF 31 DECEMBER 2015



Including renewed and new business by underwriting year.

# 2015 NOMIS – COASTAL HULL – PART 3

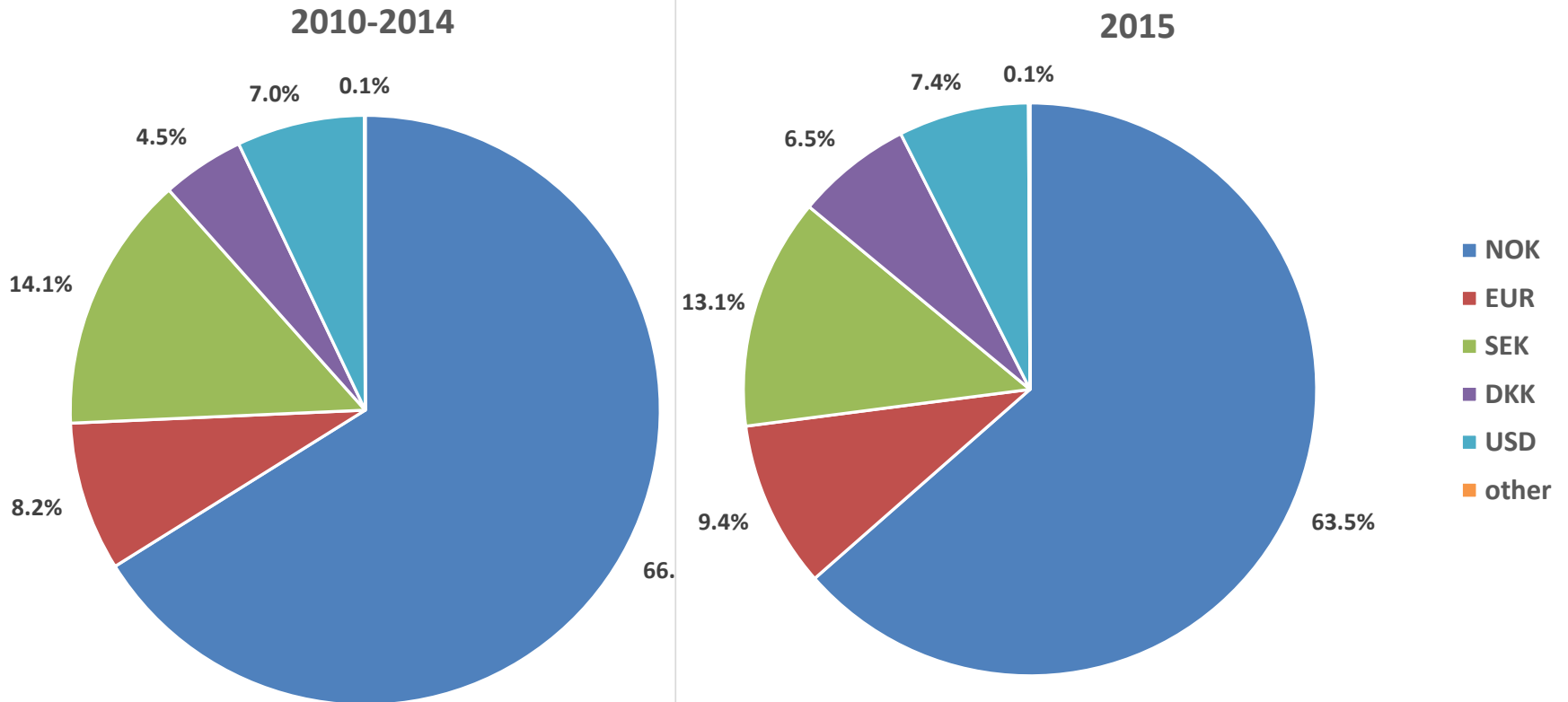
AS OF 31 DECEMBER 2015



# 2015 NOMIS COASTAL HULL - PART 3

AS OF 31 DECEMBER 2015

## Number of vessels by original currency, by year of exposure



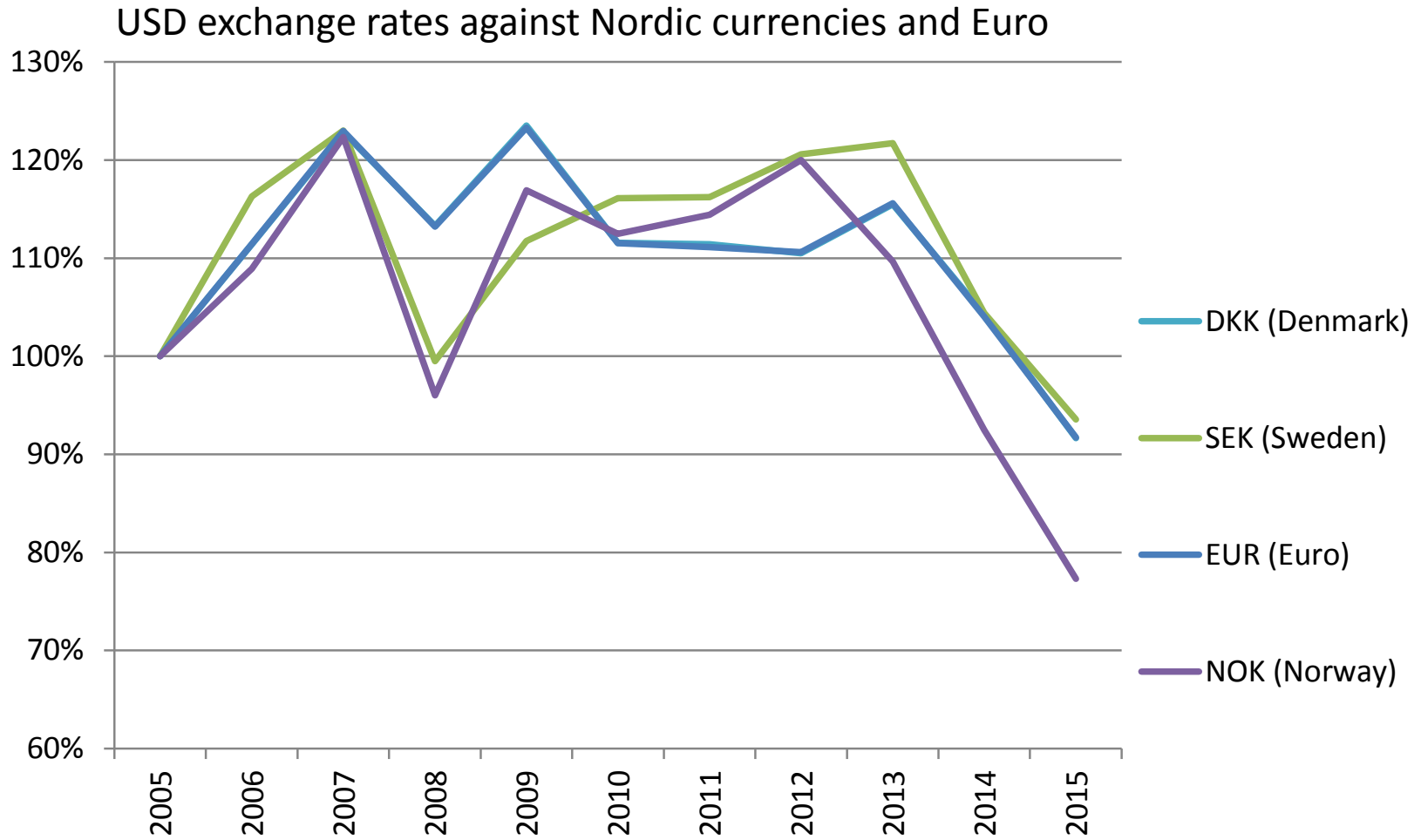
Total number of vessels:

2010-2014: 55,335

2015 11,743

# 2015 NOMIS COASTAL HULL - PART 3

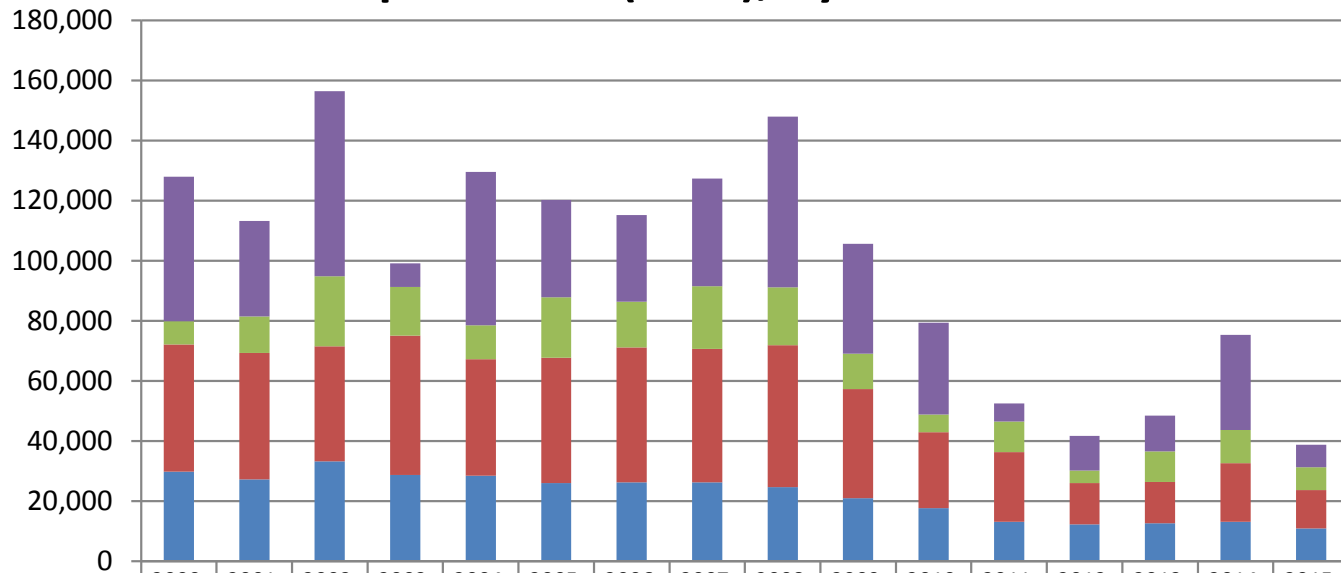
AS OF 31 DECEMBER 2015



# 2014 NOMIS – COASTAL HULL – PART 3

AS OF 31 DECEMBER 2014, PAID & OUTSTANDING AS REPORTED, NO IBNR RESERVE ADDED

## Claim per vessel (NOK), by date of loss



	2000	2001	2002	2003	2004	2005	2006	2007	2008	2009	2010	2011	2012	2013	2014	2015
■ > 1,000,000 USD	48,134	31,764	61,601	7,858	51,033	32,474	28,852	35,818	56,797	36,558	30,579	5,953	11,549	11,942	31,570	7,516
■ <= 1,000,000 USD	7,757	12,076	23,300	16,113	11,343	20,063	15,166	20,861	19,205	11,760	5,864	10,245	4,195	10,172	11,127	7,609
■ <= 500,000 USD	42,339	42,066	38,248	46,453	38,734	41,721	44,884	44,510	47,253	36,365	25,331	23,154	13,733	13,744	19,517	12,768
■ <= 100,000 USD	29,771	27,291	33,287	28,672	28,495	26,013	26,311	26,208	24,690	20,948	17,668	13,107	12,302	12,626	13,093	10,882

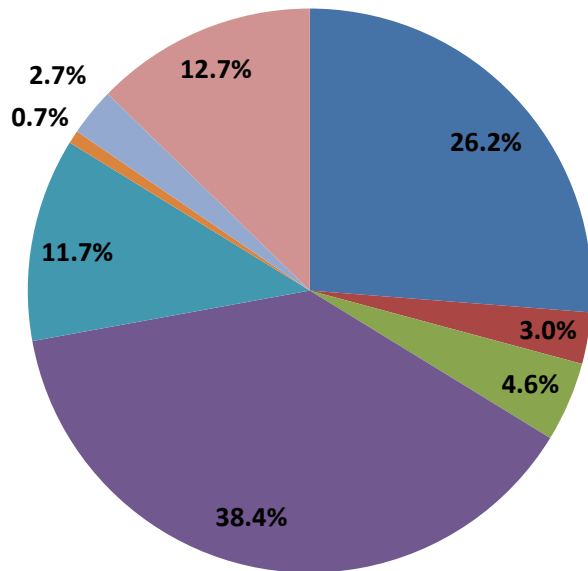
# 2015 NOMIS – COASTAL HULL – PART 3

AS OF 31 DECEMBER 2015, PAID & OUTSTANDING AS REPORTED, NO IBNR RESERVE ADDED

## Claims by Claims type

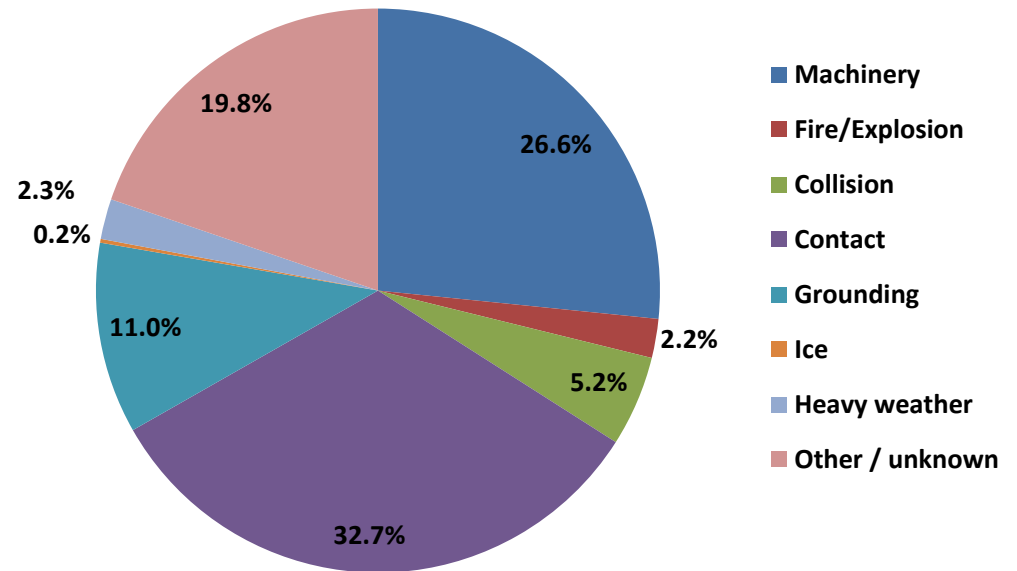
Number of claims

2010-2014



Number of claims

2015



Total number of claims:

2010-2014: 8,268

2015: 1,387

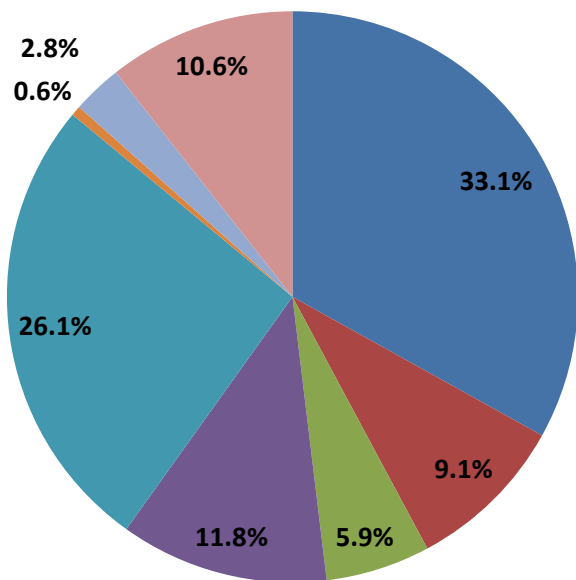
# 2015 NOMIS – COASTAL HULL – PART 3

AS OF 31 DECEMBER 2015, PAID & OUTSTANDING AS REPORTED, NO IBNR RESERVE ADDED

## Claims by Claims type

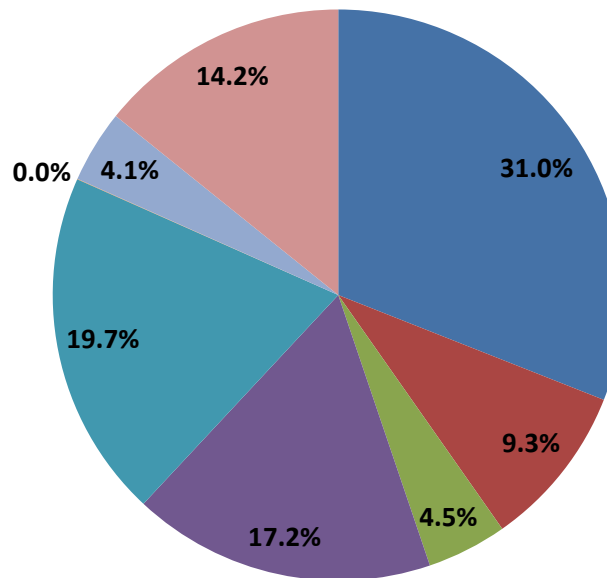
Cost of claims

2010-2014



Cost of claims

2015



- Machinery
- Fire/Explosion
- Collision
- Contact
- Grounding
- Ice
- Heavy weather
- Other / unknown

Total cost, NOK million:

2010-2014: 3,257.9

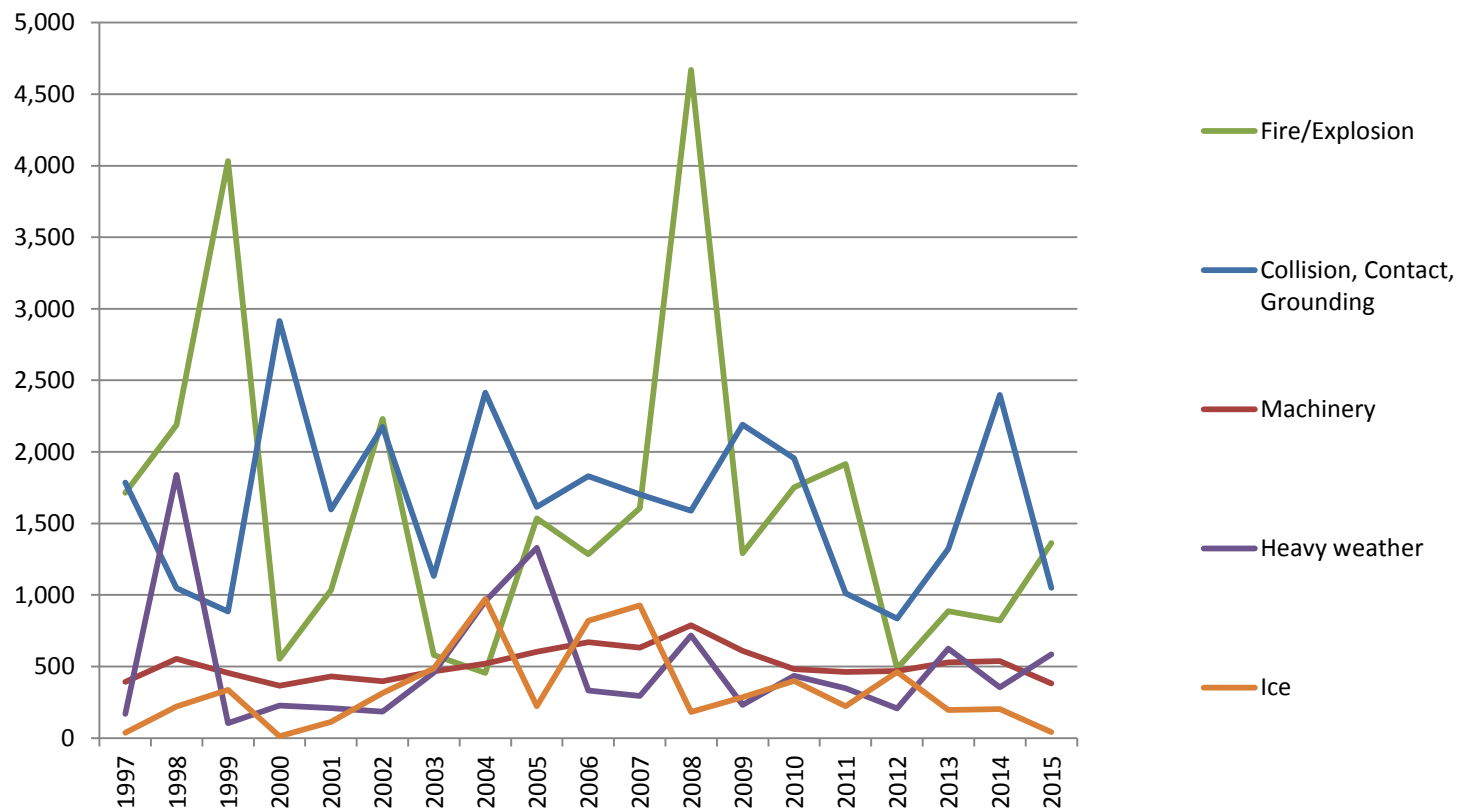
2015: 455.3



# 2015 NOMIS – COASTAL HULL – PART 3

AS OF 31 DECEMBER 2015, PAID & OUTSTANDING AS REPORTED, NO IBNR RESERVE ADDED

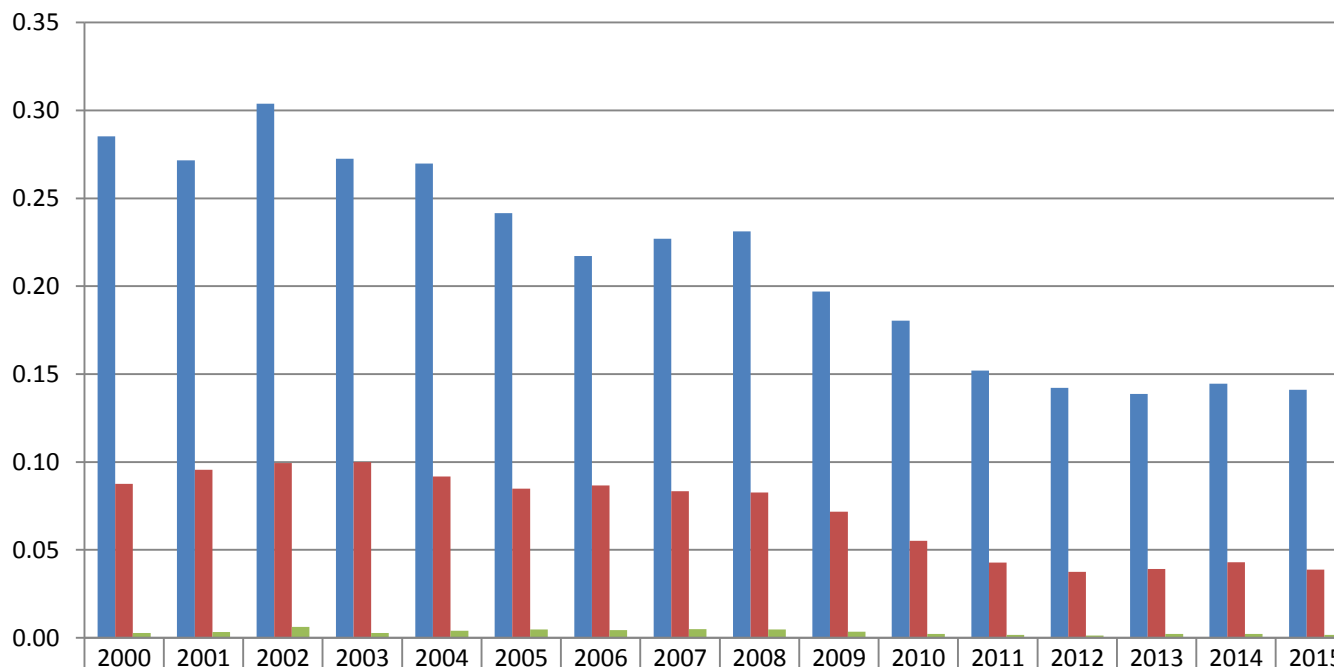
**Average claim cost per type of casualty  
by date of loss, in NOK 1,000**



# 2015 NOMIS – COASTAL HULL – PART 3

AS OF 31 DECEMBER 2015, INCL. IBNR RESERVE FOR FREQUENCY OF PARTIAL CLAIMS

## Claims frequency

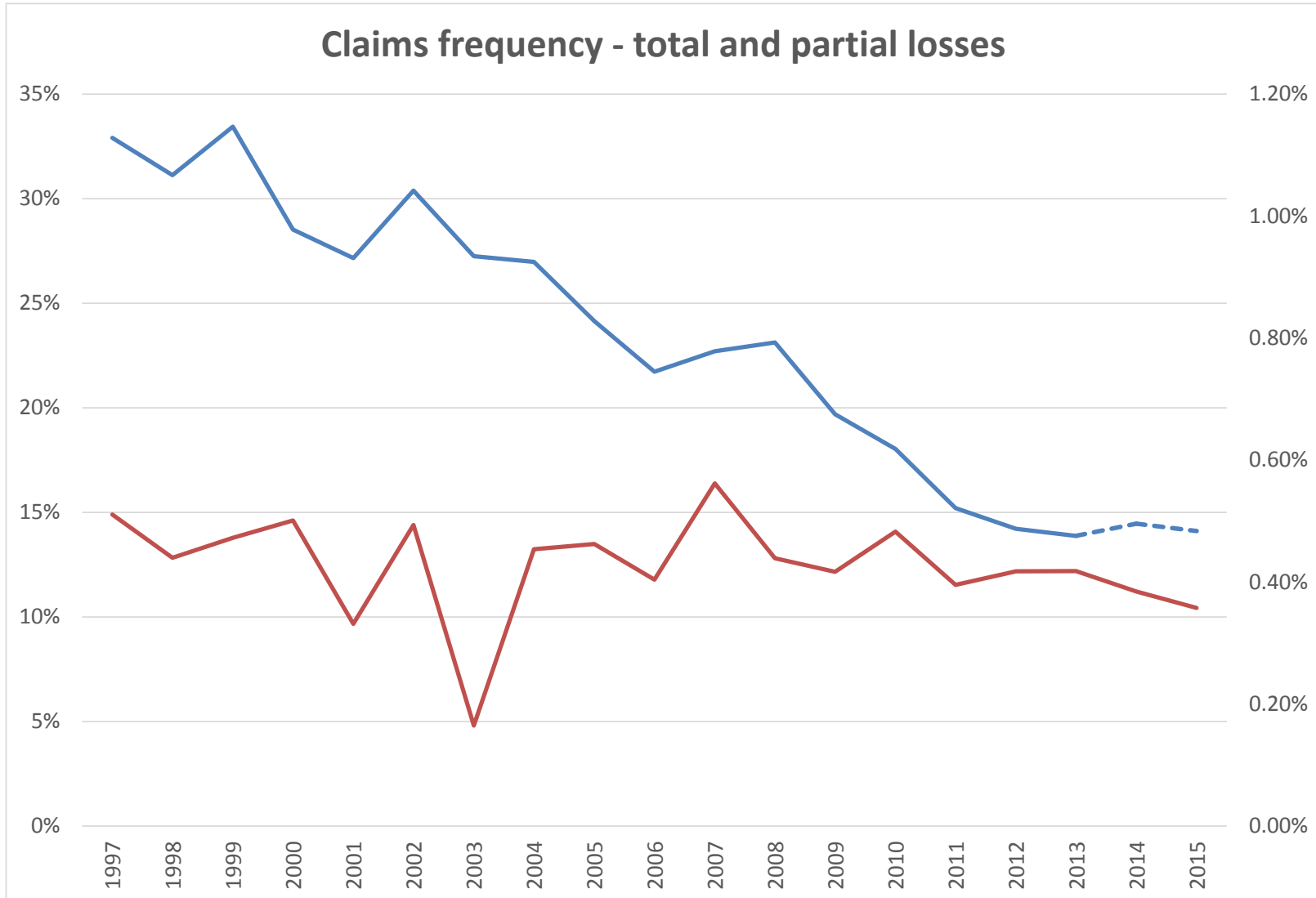


■ all claims	0.29	0.27	0.30	0.27	0.27	0.24	0.22	0.23	0.23	0.20	0.18	0.15	0.14	0.14	0.14	0.14
■ > 100,000 NOK	8.75%	0.10	0.10	0.10	0.09	0.08	0.09	0.08	0.08	0.07	0.06	0.04	0.04	0.04	0.04	0.04
■ > 5,000,000 NOK	0.27%	0.00	0.01	0.00	0.00	0.00	0.00	0.00	0.00	0.00	0.00	0.00	0.00	0.00	0.00	0.00

Comment: Claims < 100,000 NOK account for more than half of all claims. Registration of these may vary over time and by company and will thus influence the registered frequency. In addition any increase/decrease of insurance deductibles will have impact on the registered frequency.

# 2015 NOMIS – COASTAL HULL – PART 3

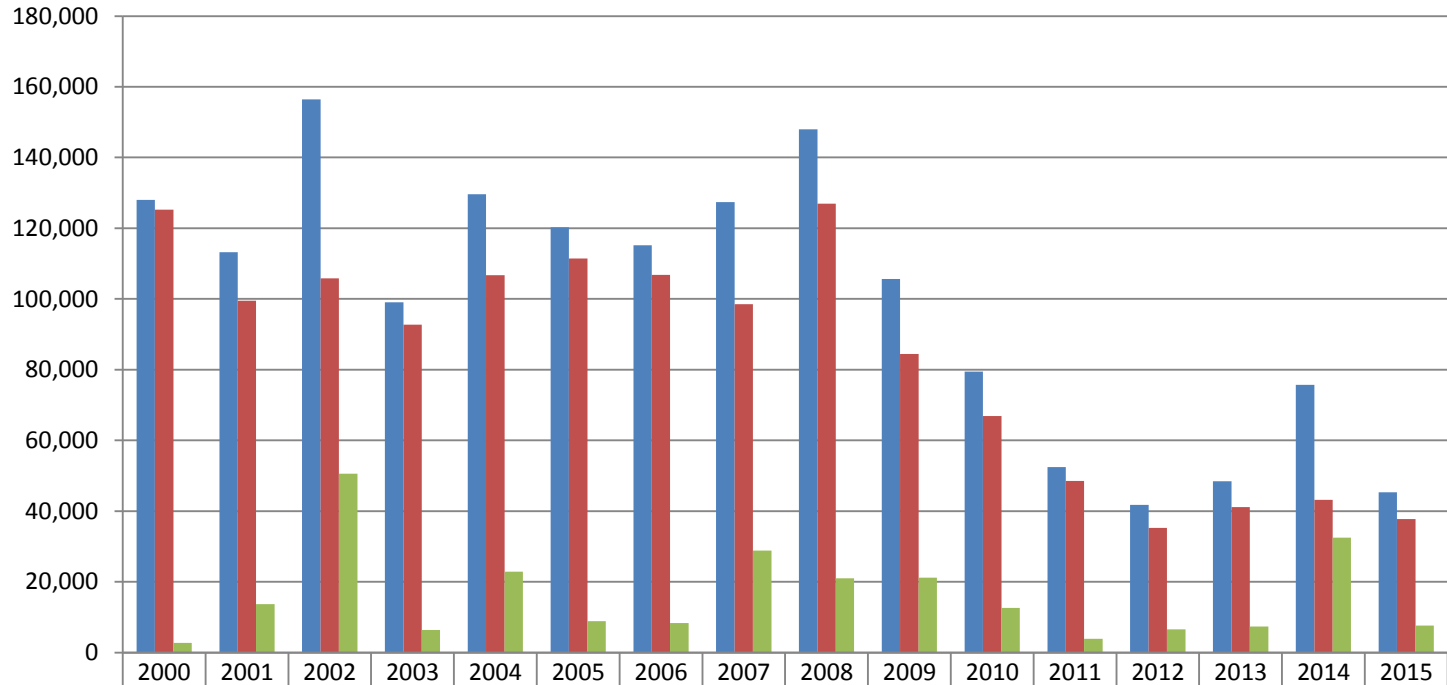
AS OF 31 DECEMBER 2015, INCL. IBNR RESERVE FOR FREQUENCY OF PARTIAL CLAIMS



# 2015 NOMIS – COASTAL HULL – PART 3

AS OF 31 DECEMBER 2015, INCL. IBNR RESERVE FOR PARTIAL CLAIMS

## Claim per Vessel

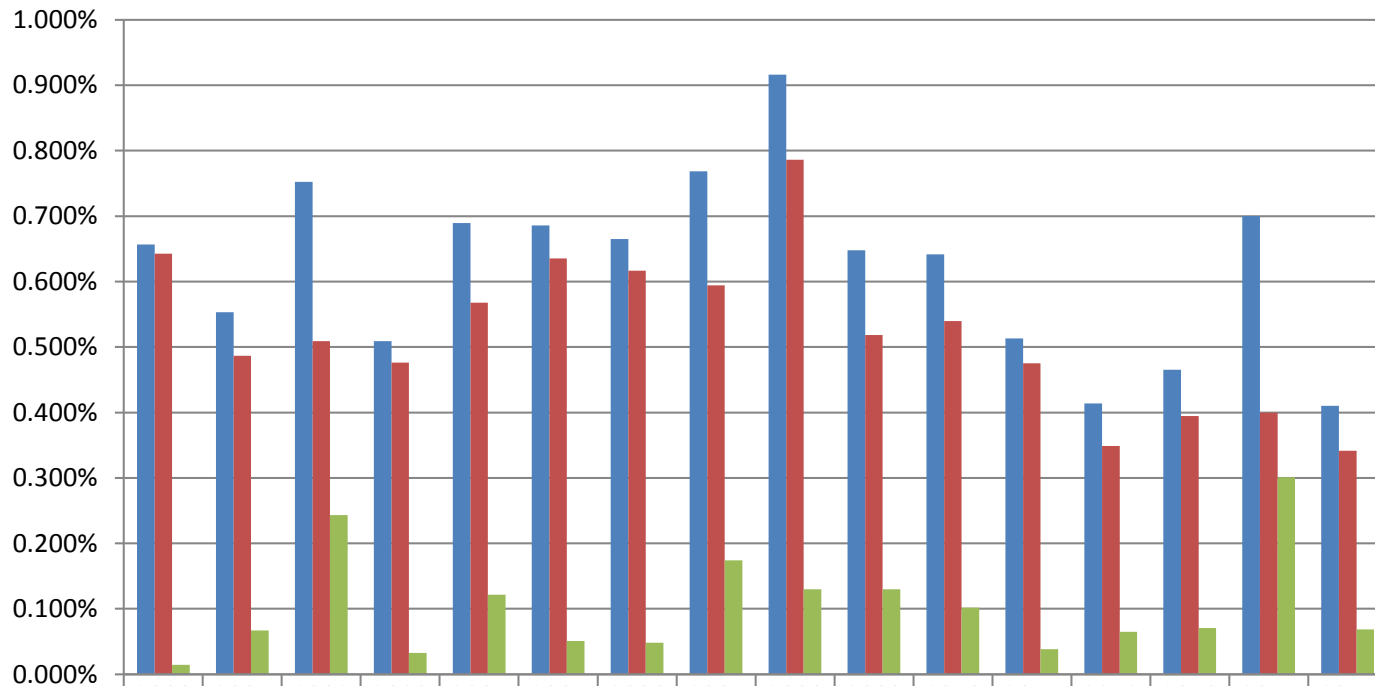


	2000	2001	2002	2003	2004	2005	2006	2007	2008	2009	2010	2011	2012	2013	2014	2015
■ all claims	128,00	113,19	156,43	99,096	129,60	120,27	115,21	127,39	147,94	105,63	79,442	52,459	41,779	48,484	75,710	45,342
■ partial claims	125,24	99,537	105,81	92,730	106,71	111,39	106,83	98,538	126,97	84,480	66,843	48,564	35,218	41,141	43,202	37,752
■ TLO claims	2,759	13,660	50,619	6,366	22,892	8,872	8,376	28,858	20,974	21,151	12,599	3,895	6,561	7,343	32,508	7,590

# 2014 NOMIS – COASTAL HULL – PART 3

AS OF 31 DECEMBER 2014, INCL. IBNR RESERVE FOR PARTIAL CLAIMS

## Claim per Sum Insured

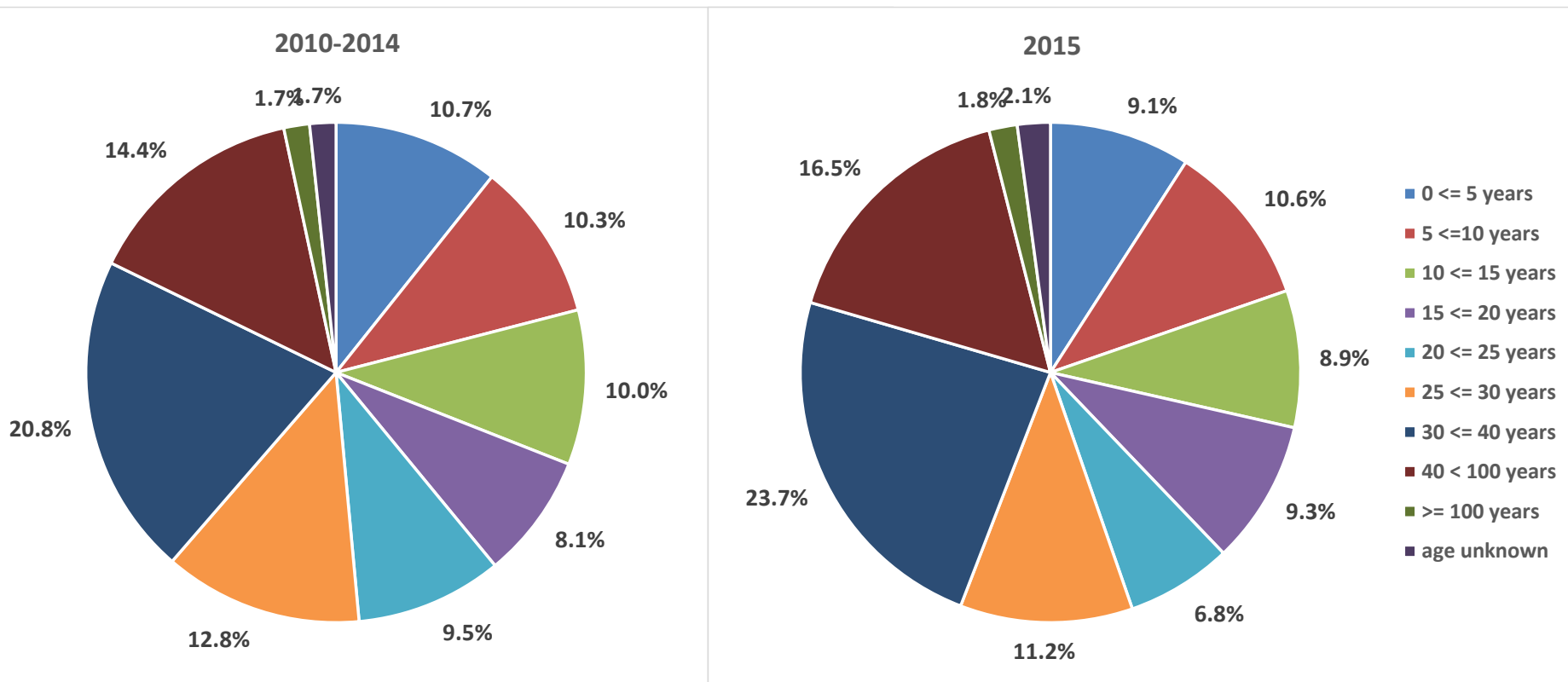


	2000	2001	2002	2003	2004	2005	2006	2007	2008	2009	2010	2011	2012	2013	2014	2015
■ all claims	0.657	0.553	0.752	0.509	0.689	0.686	0.665	0.768	0.916	0.648	0.642	0.513	0.414	0.465	0.700	0.410
■ partial claims	0.643	0.486	0.509	0.476	0.568	0.635	0.617	0.594	0.786	0.518	0.540	0.475	0.349	0.395	0.400	0.342
■ TLO claims	0.014	0.067	0.243	0.033	0.122	0.051	0.048	0.174	0.130	0.130	0.102	0.038	0.065	0.070	0.301	0.069

# 2015 NOMIS – COASTAL HULL – PART 4

AS OF 31 DECEMBER 2015

## Number of vessels per age group, by year of exposure



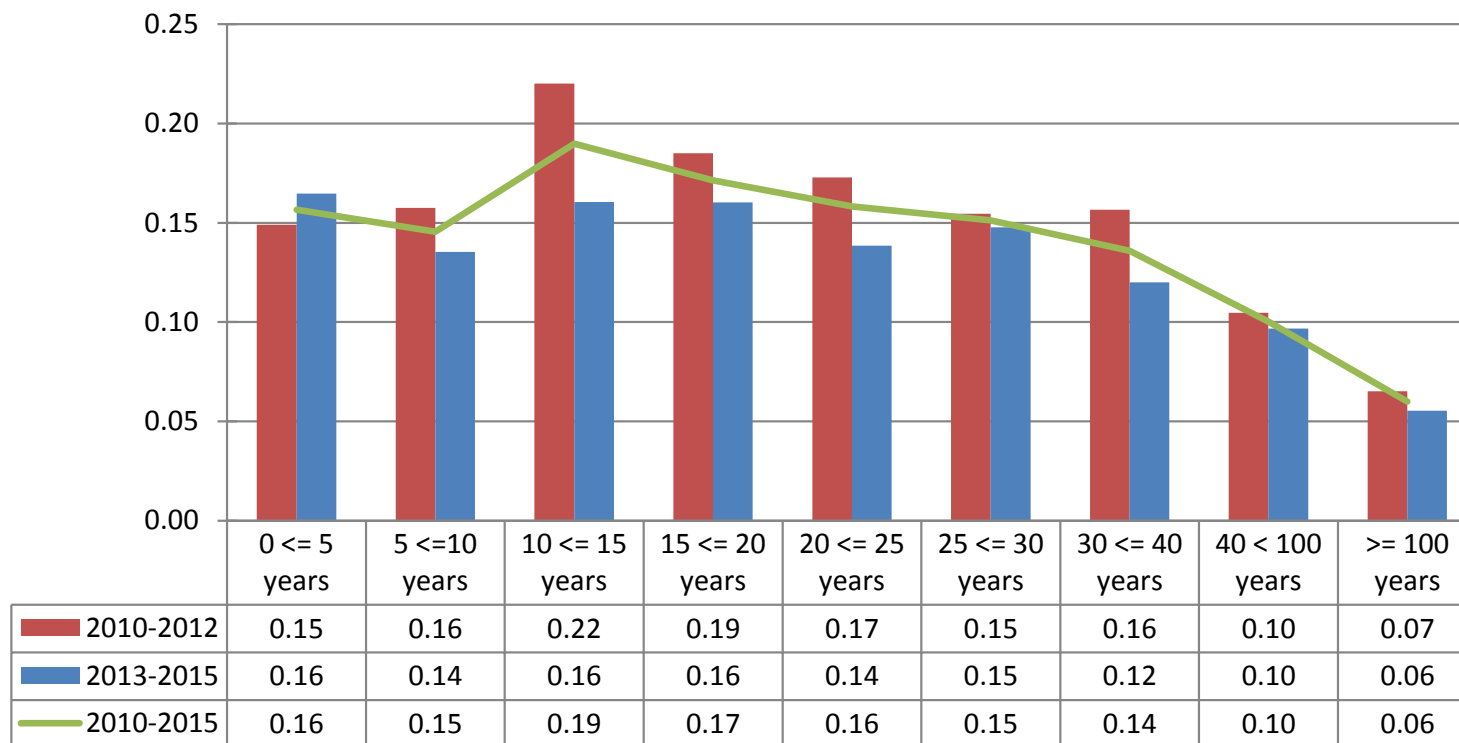
Total number of vessels:  
2010-2014: 55,335

2014: 11,743

# 2015 NOMIS – COASTAL HULL – PART 4

AS OF 31 DECEMBER 2015, PAID & OUTSTANDING AS REPORTED, NO IBNR RESERVE ADDED

## Claims frequency per age group

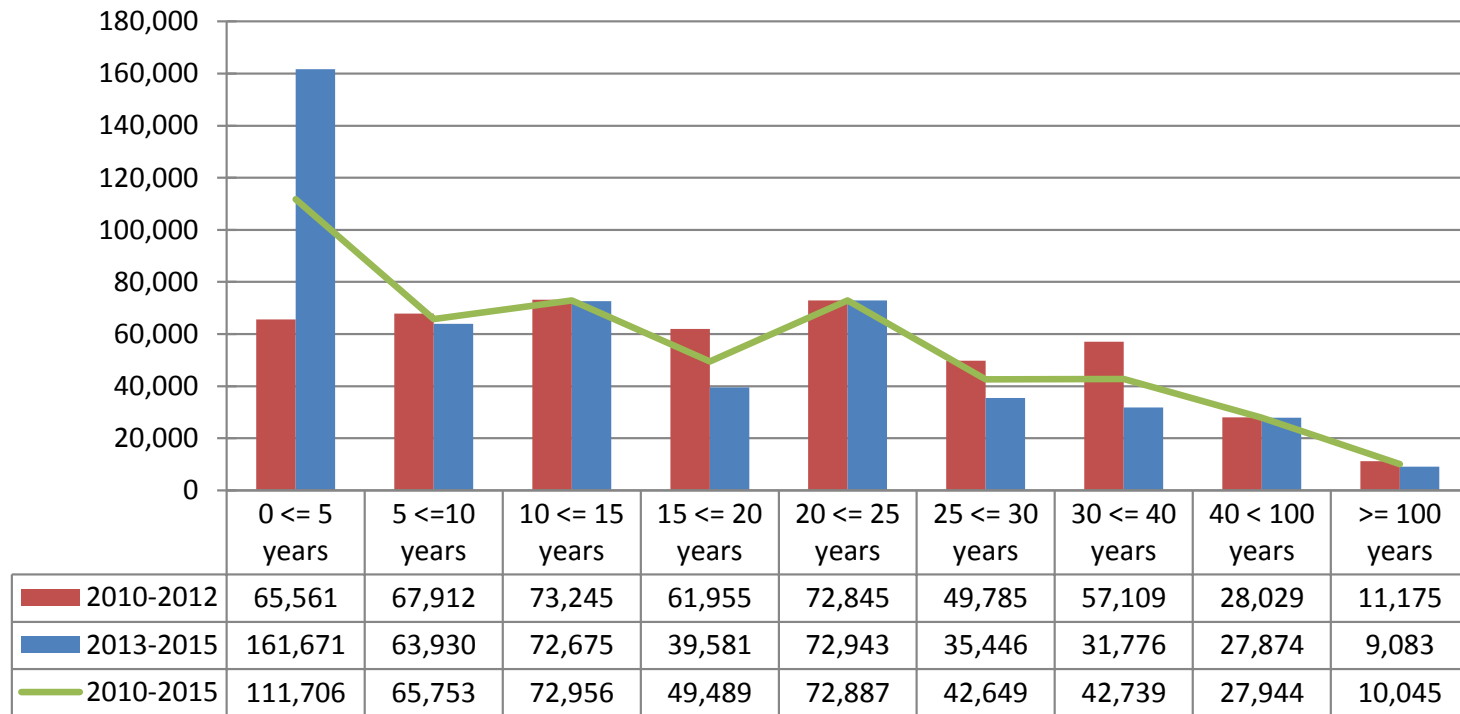


Comment: Claims < 100.000 NOK account for about half of all claims. Registration of these may vary over time and in each company and will thus influence the registered frequency. In addition any increase/decrease of insurance deductibles will have impact on the registered frequency

# 2015 NOMIS – COASTAL HULL – PART 4

AS OF 31 DECEMBER 2015, PAID & OUTSTANDING AS REPORTED, NO IBNR RESERVE ADDED

## Claim per vessel per age group

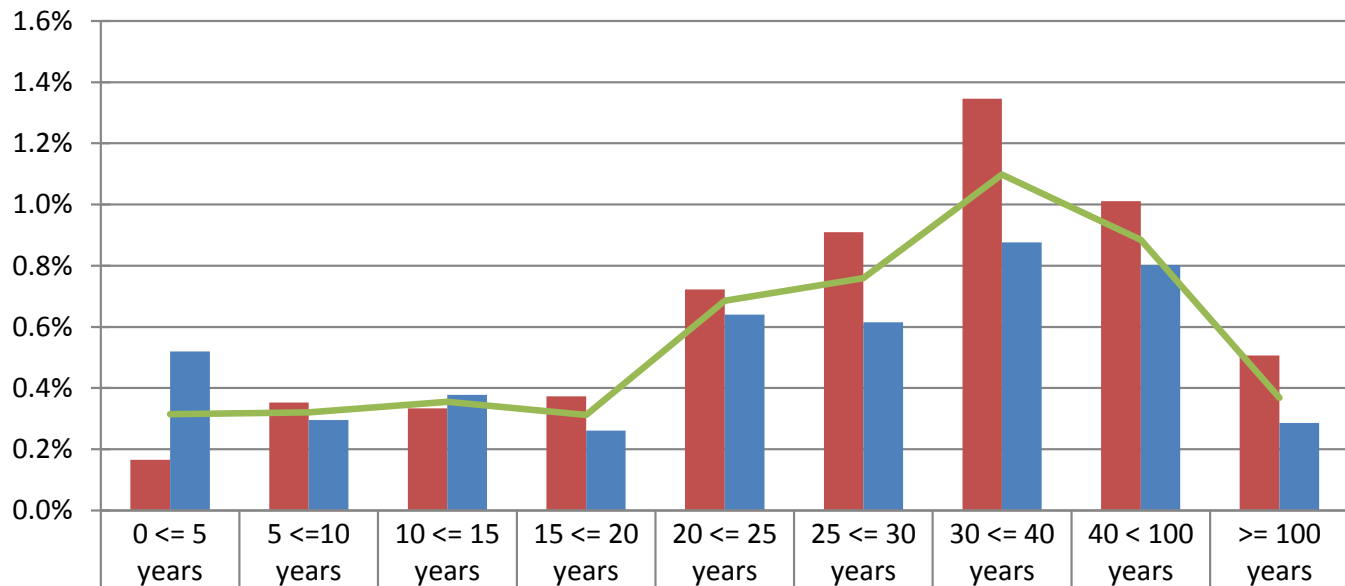




# 2015 NOMIS – COASTAL HULL – PART 4

AS OF 31 DECEMBER 2015, PAID & OUTSTANDING AS REPORTED, NO IBNR RESERVE ADDED

## Claim per Sum Insured per age group

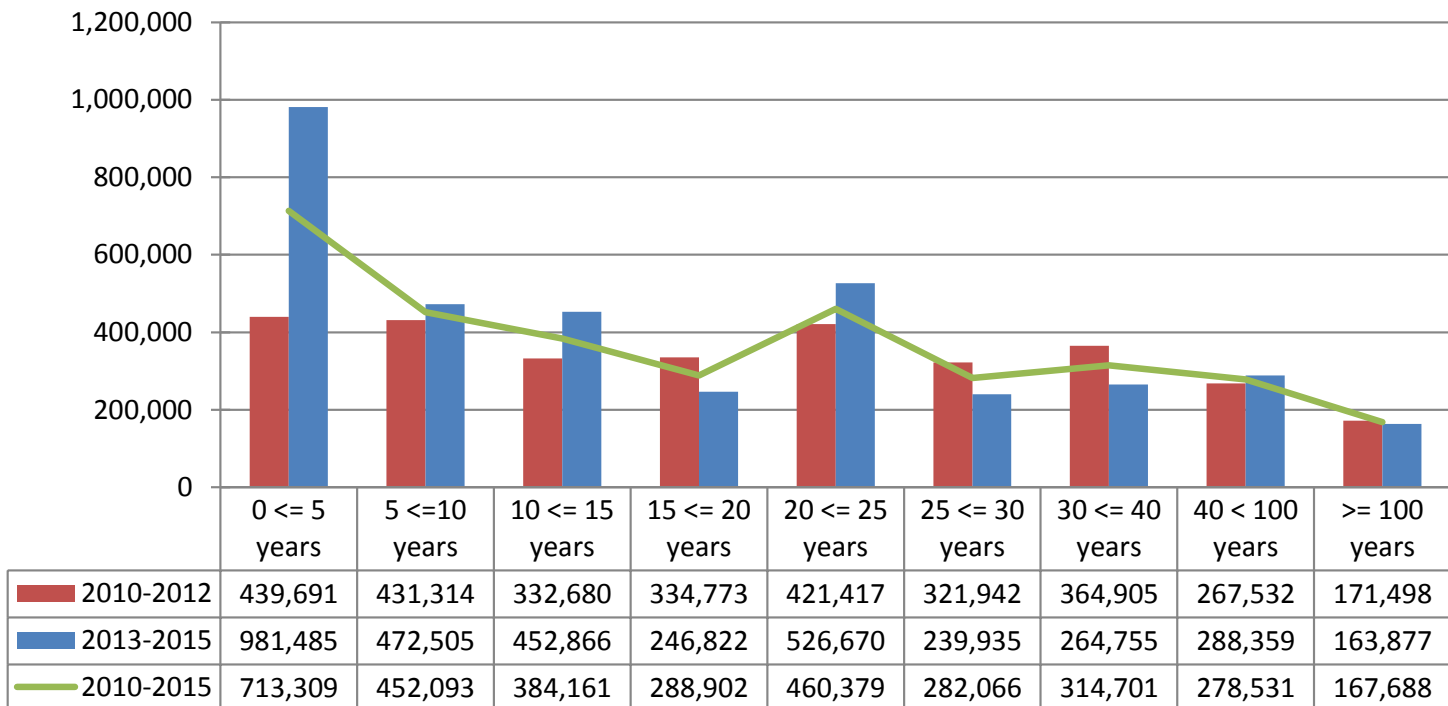


	0 <= 5 years	5 <=10 years	10 <= 15 years	15 <= 20 years	20 <= 25 years	25 <= 30 years	30 <= 40 years	40 < 100 years	>= 100 years
2010-2012	0.165%	0.353%	0.334%	0.373%	0.723%	0.910%	1.346%	1.011%	0.507%
2013-2015	0.520%	0.296%	0.378%	0.261%	0.641%	0.615%	0.877%	0.802%	0.286%
2010-2015	0.315%	0.320%	0.355%	0.313%	0.686%	0.760%	1.098%	0.885%	0.368%

# 2015 NOMIS – COASTAL HULL – PART 4

AS OF 31 DECEMBER 2015, PAID & OUTSTANDING AS REPORTED, NO IBNR RESERVE ADDED

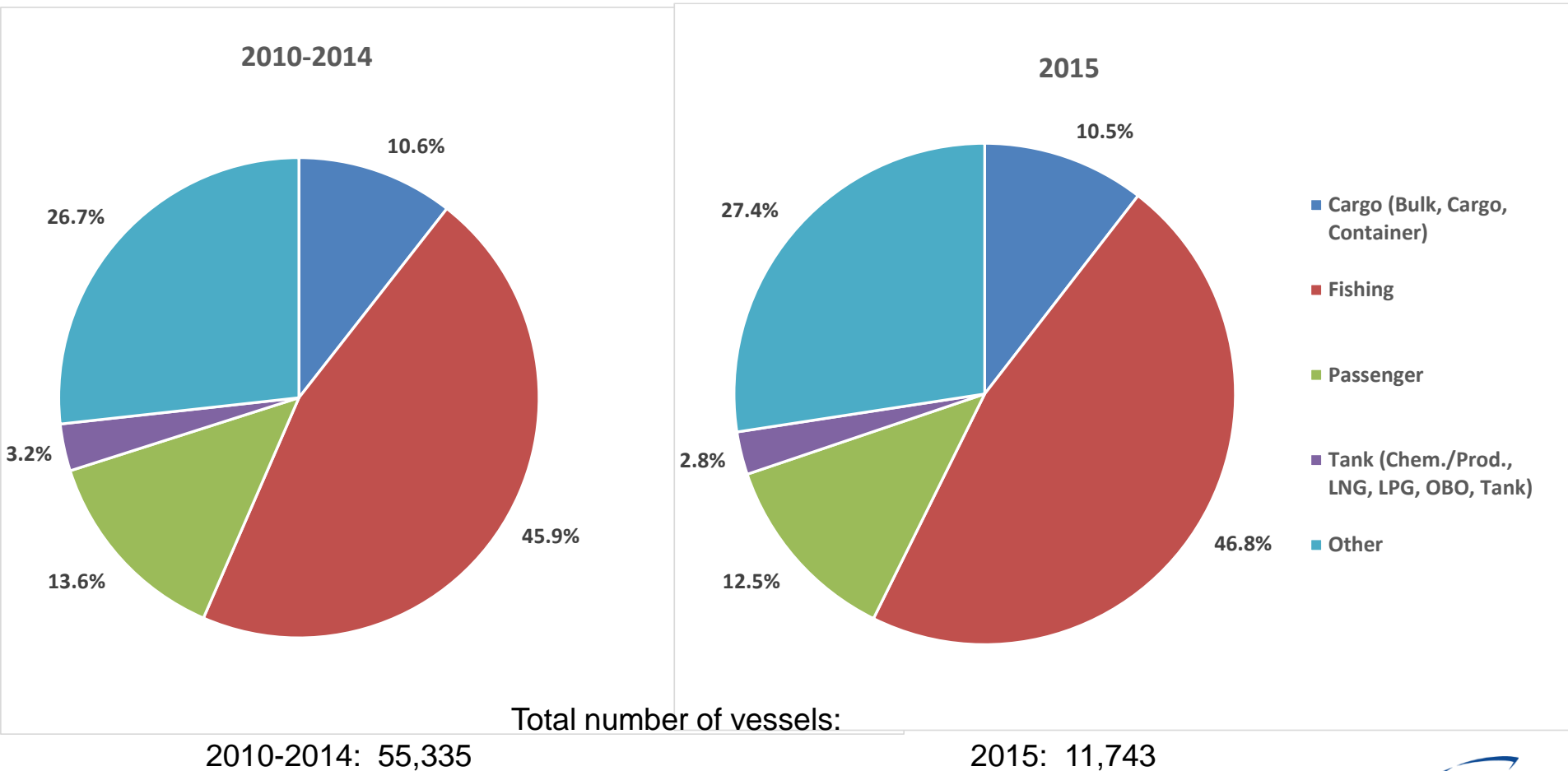
## Average claim cost per age group



# 2015 NOMIS – COASTAL HULL – PART 5

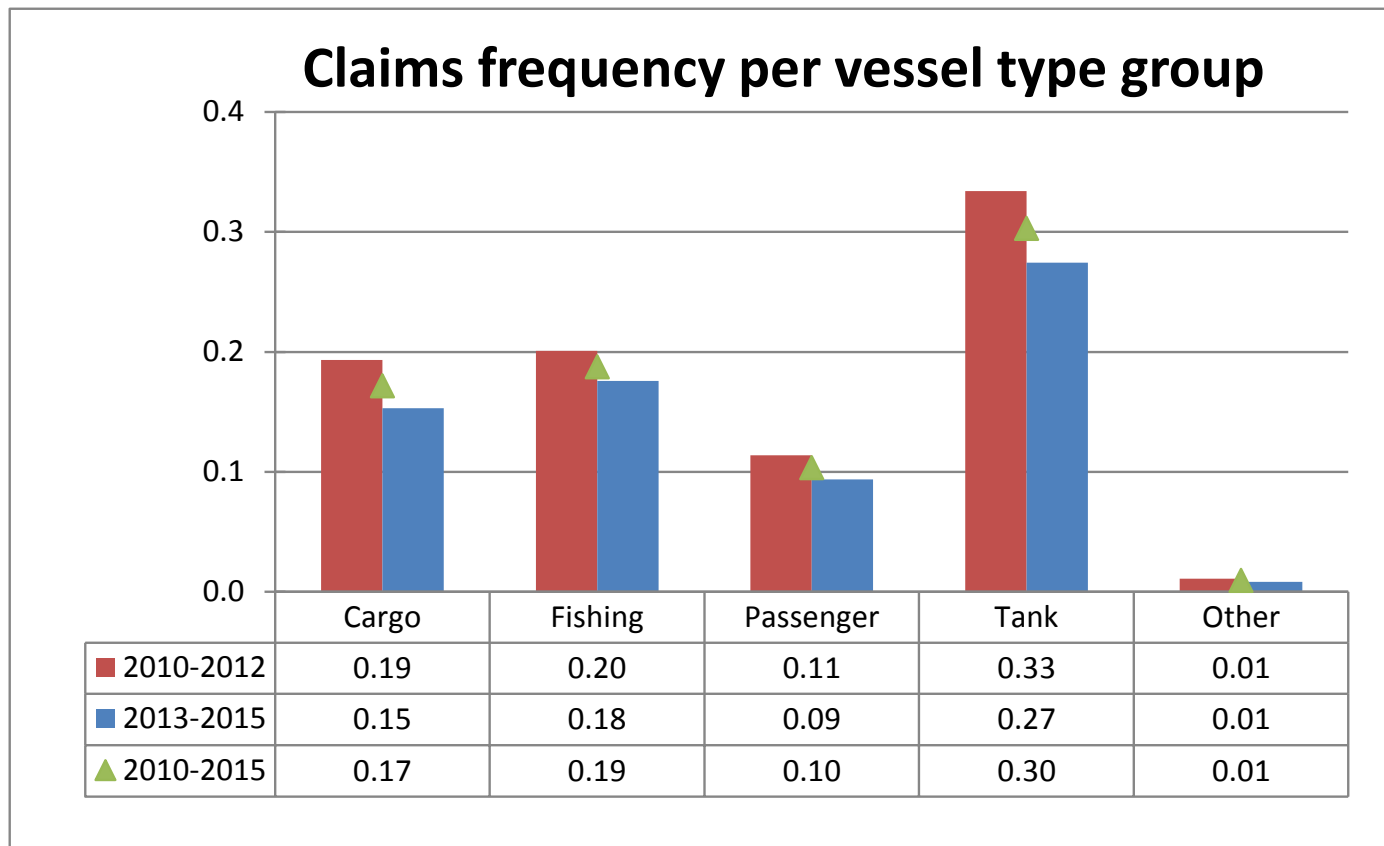
AS OF 31 DECEMBER 2015

## Number of vessels per vessel type, by year of exposure



# 2015 NOMIS – COASTAL HULL – PART 5

AS OF 31 DECEMBER 2015, PAID & OUTSTANDING AS REPORTED, NO IBNR RESERVE ADDED



"Cargo" includes Bulk, Cargo, Container vessels.

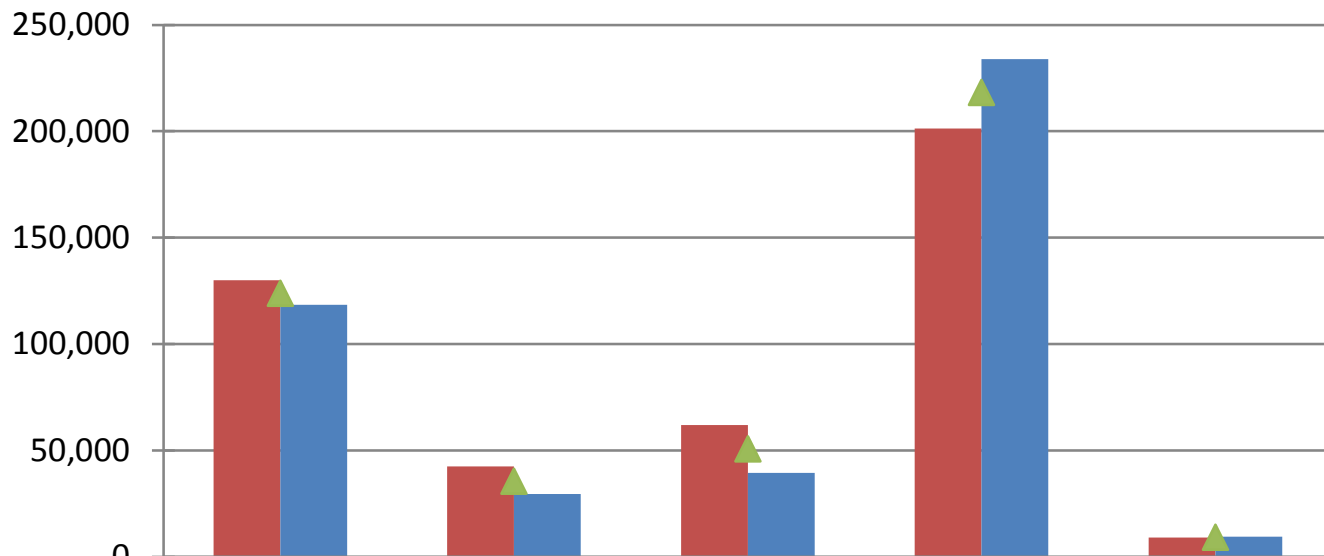
"Tank" includes Chemical/Product, LNG/LPG, OBO and other tank vessels.

Claims < 100,000 NOK account for nearly half of all claims. Registration of these may vary over time and by company and will thus influence the registered frequency. In addition any increase/decrease of insurance deductibles has impact on the registered frequency

# 2015 NOMIS – COASTAL HULL – PART 5

AS OF 31 DECEMBER 2015, PAID & OUTSTANDING AS REPORTED, NO IBNR RESERVE ADDED

## Claim per vessel per vessel type group

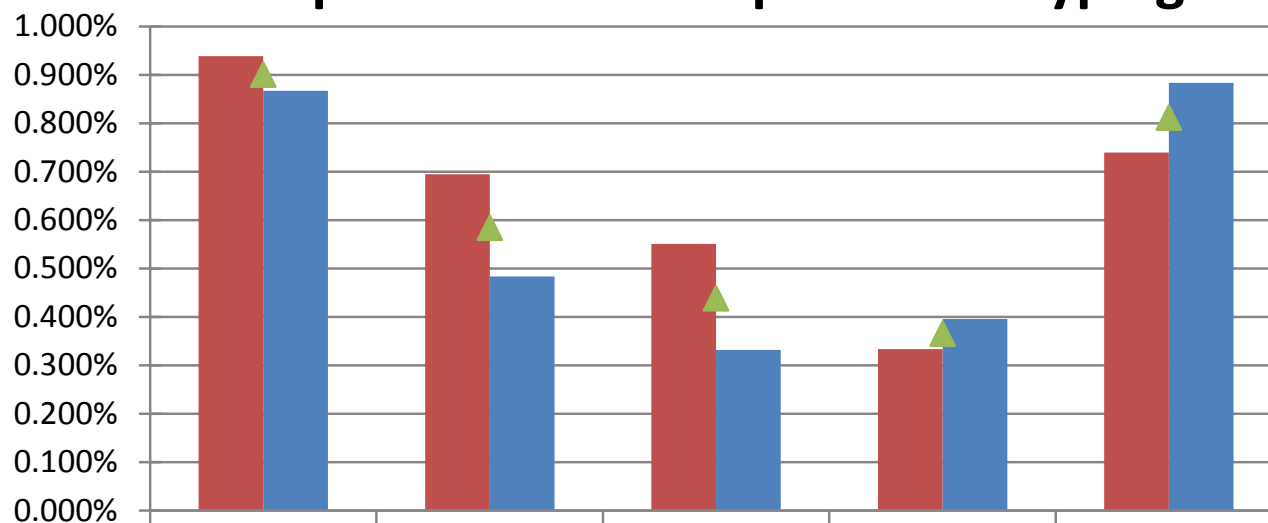


	Cargo	Fishing	Passenger	Tank	Other
■ 2010-2012	129,965	42,368	61,955	201,277	9,049
■ 2013-2015	118,471	29,545	39,459	233,811	9,470
▲ 2010-2015	123,856	35,664	50,700	218,220	9,275

# 2015 NOMIS – COASTAL HULL – PART 5

AS OF 31 DECEMBER 2015, PAID & OUTSTANDING AS REPORTED, NO IBNR RESERVE ADDED

## Claim per Sum Insured per vessel type group

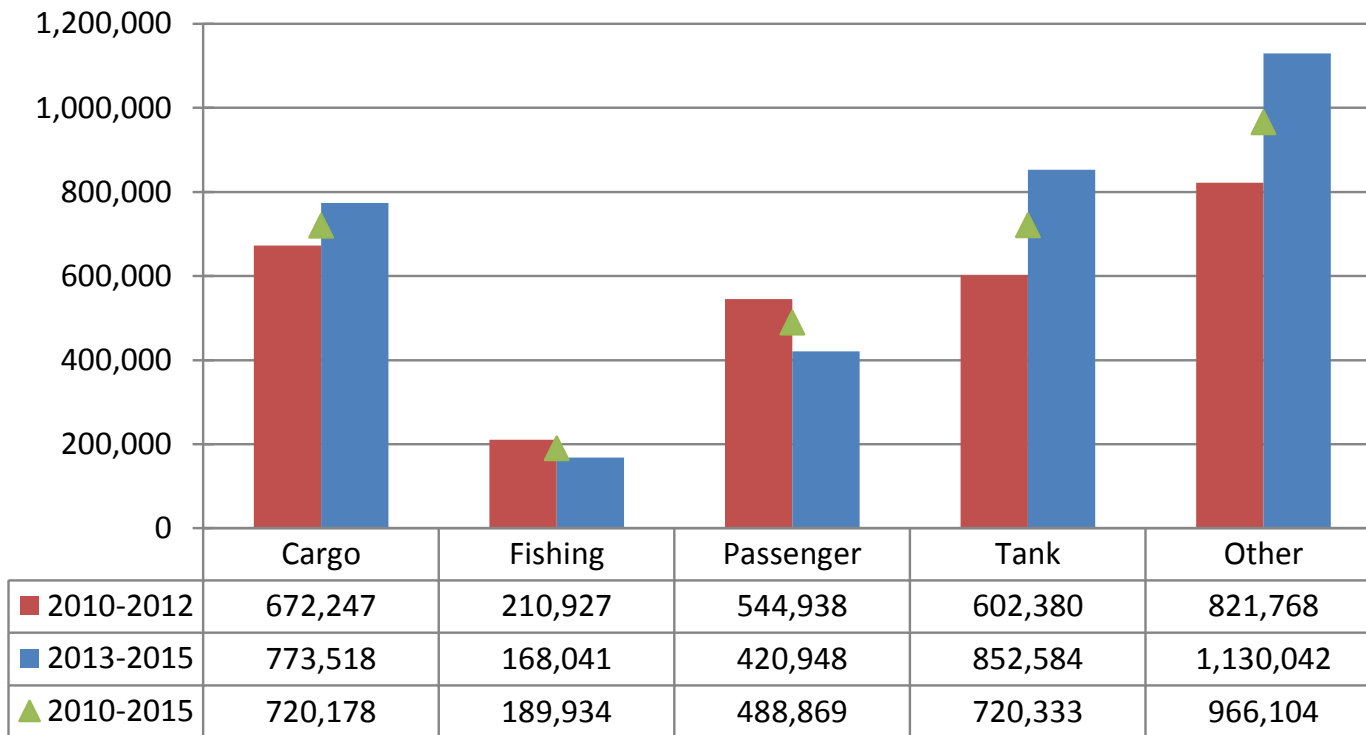


	Cargo	Fishing	Passenger	Tank	Other
■ 2010-2012	0.939%	0.695%	0.551%	0.333%	0.740%
■ 2013-2015	0.867%	0.483%	0.332%	0.395%	0.884%
▲ 2010-2015	0.901%	0.584%	0.439%	0.365%	0.812%

# 2015 NOMIS – COASTAL HULL – PART 5

AS OF 31 DECEMBER 2015, PAID & OUTSTANDING AS REPORTED, NO IBNR RESERVE ADDED

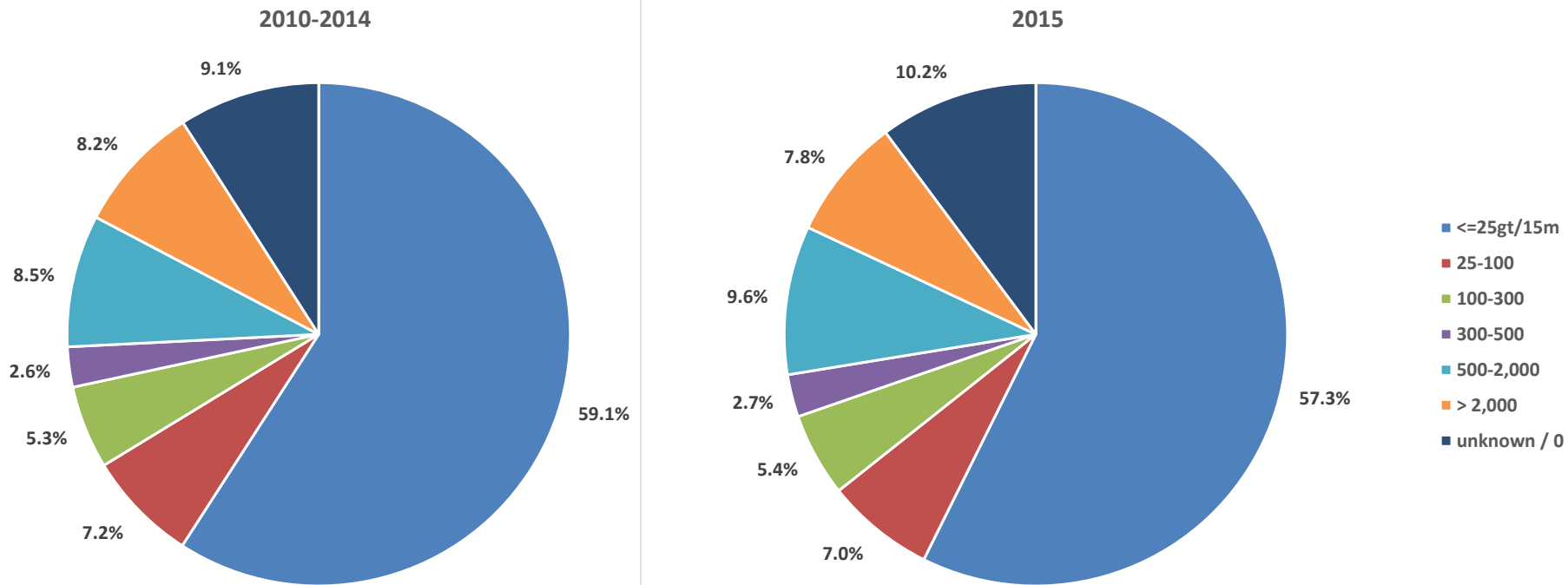
## Average claim cost per vessel type group



# 2015 NOMIS – COASTAL HULL – PART 6

AS OF 31 DECEMBER 2015

## Number of vessels per GT Size Group



2010-2014: 55,335

Total number of vessels:

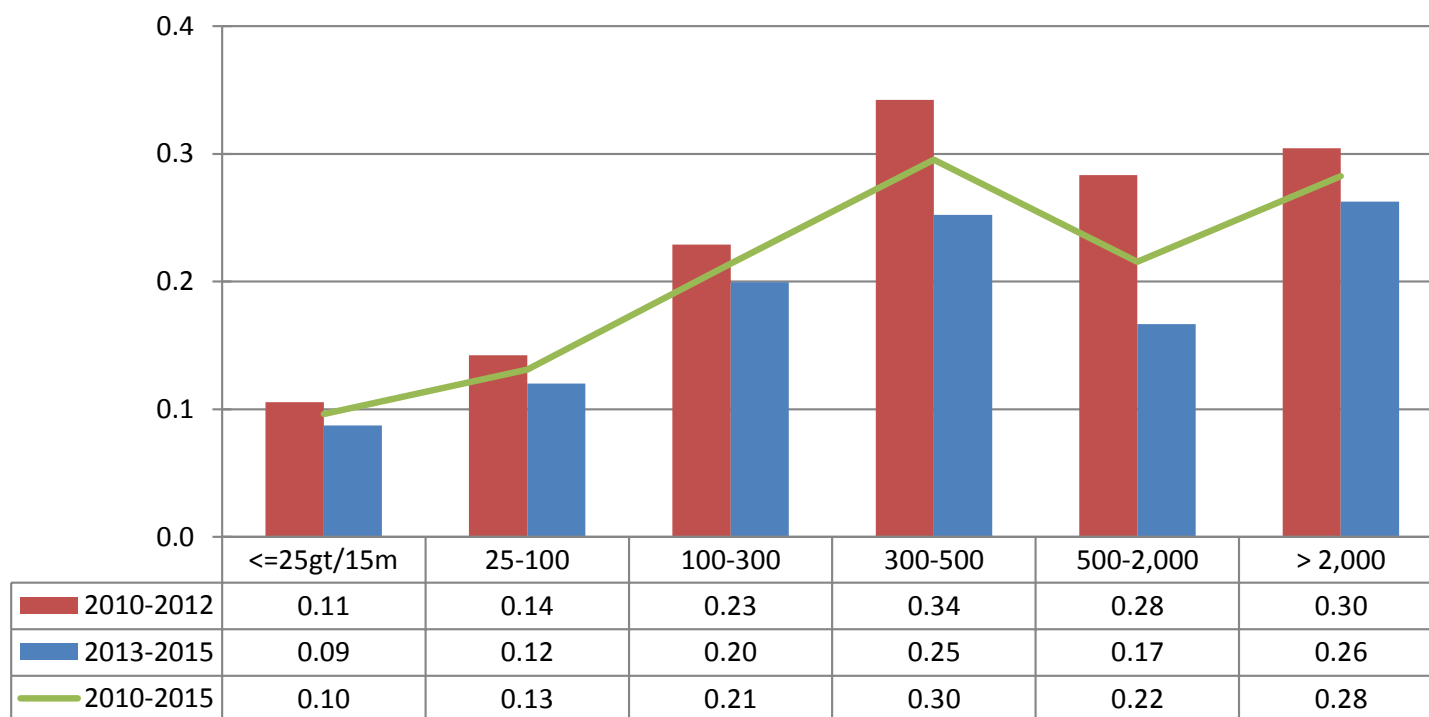
2015: 11,743



# 2015 NOMIS – COASTAL HULL – PART 6

AS OF 31 DECEMBER 2015, PAID & OUTSTANDING AS REPORTED, NO IBNR RESERVE ADDED

## Claims frequency per gross ton size group

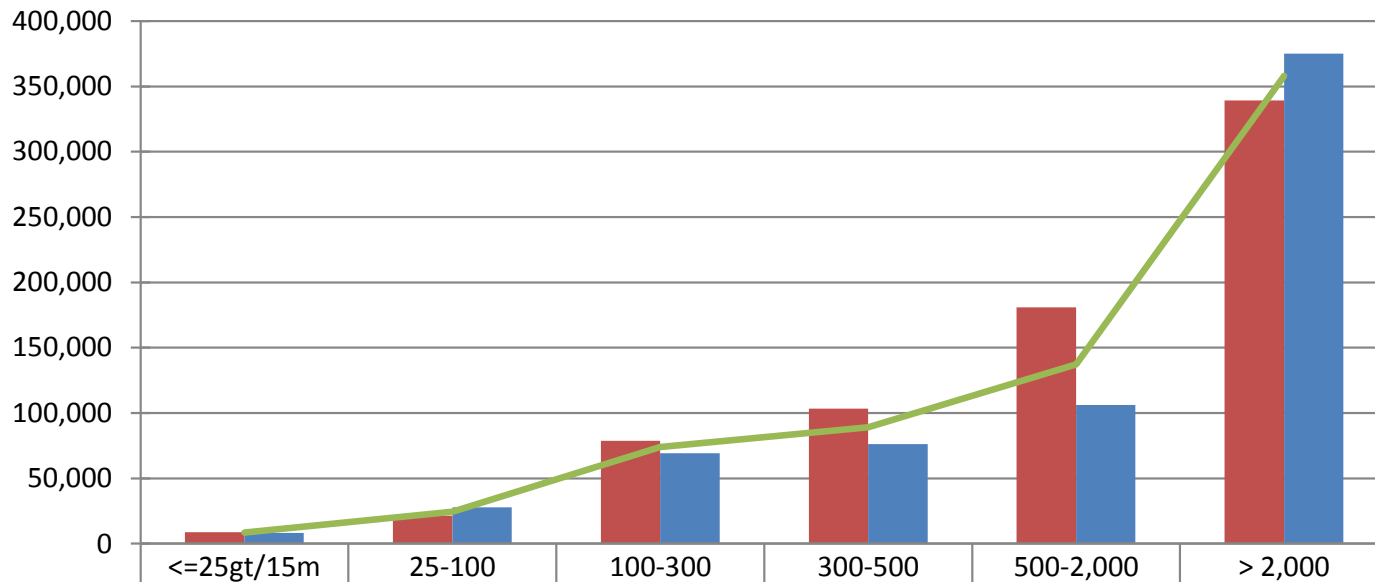


**Comment:** Claims < 100.000 NOK account for nearly half of all claims. Registration of these may vary over time and by company and will thus influence the registered frequency. In addition any increase/decrease of insurance deductibles will have impact on the registered frequency

# 2015 NOMIS – COASTAL HULL – PART 6

AS OF 31 DECEMBER 2015, PAID & OUTSTANDING AS REPORTED, NO IBNR RESERVE ADDED

## Claim per vessel per gross ton size group

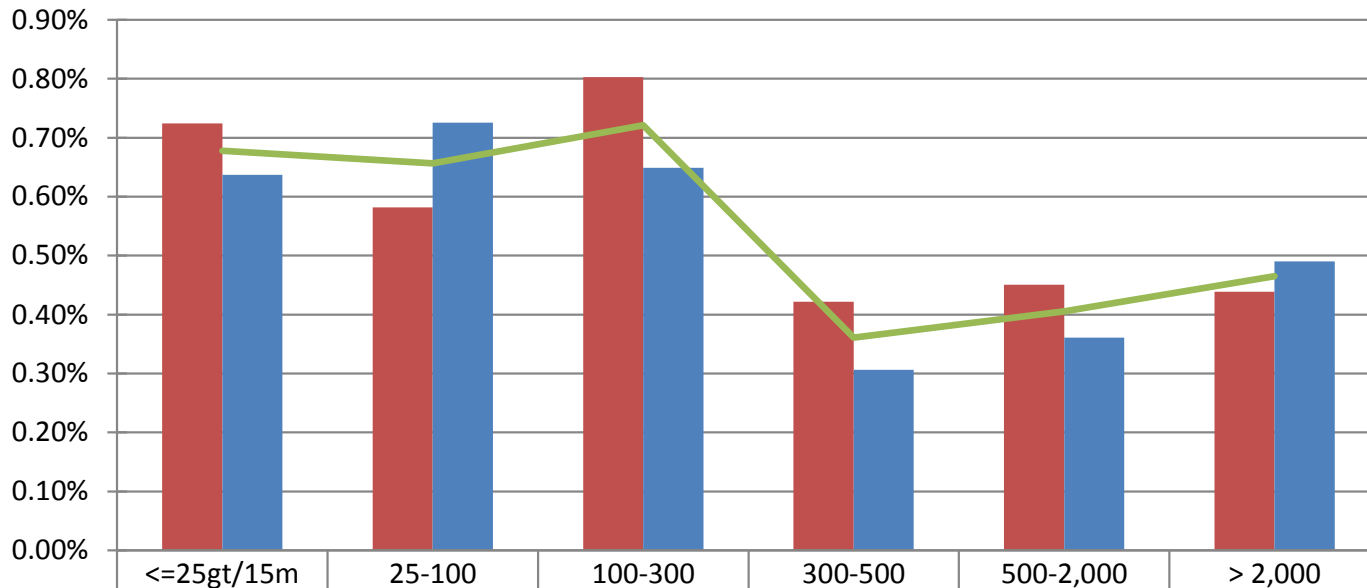


	<=25gt/15m	25-100	100-300	300-500	500-2,000	> 2,000
2010-2012	8,745	21,207	78,629	103,468	180,743	339,250
2013-2015	8,229	27,752	69,311	76,107	106,004	375,229
2010-2015	8,479	24,535	73,868	89,196	137,230	357,967

# 2015 NOMIS – COASTAL HULL – PART 6

AS OF 31 DECEMBER 2015, PAID & OUTSTANDING AS REPORTED, NO IBNR RESERVE ADDED

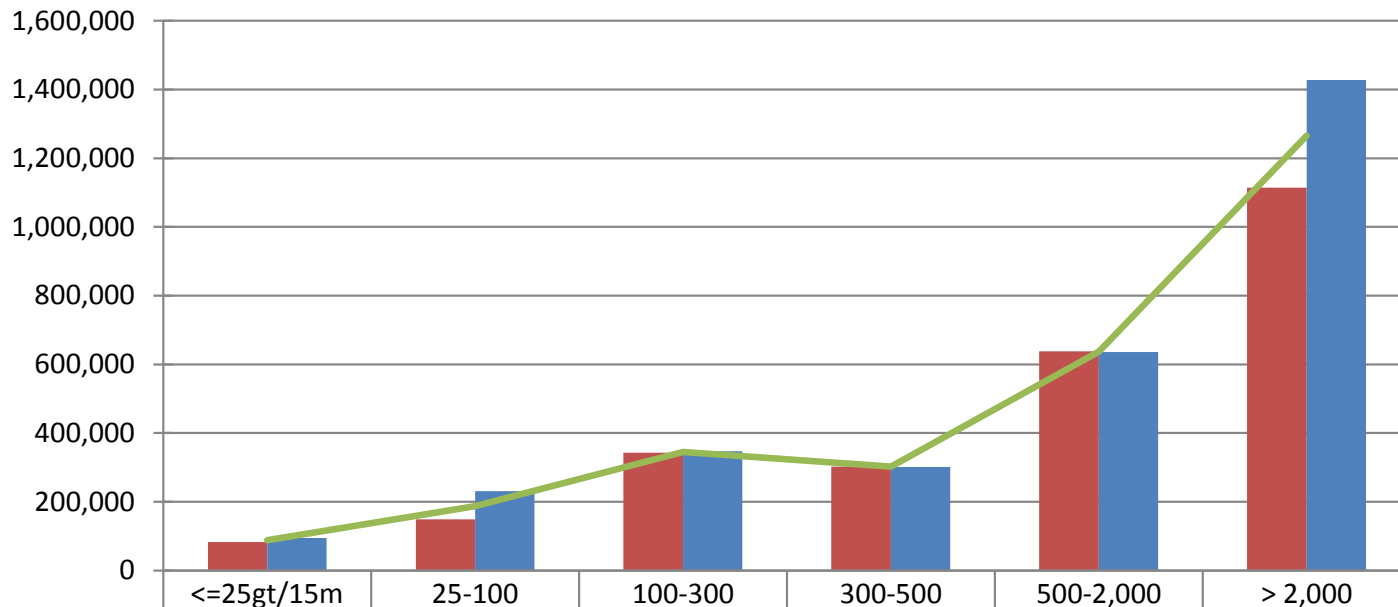
## Claim per Sum Insured per gross ton size group



# 2015 NOMIS – COASTAL HULL – PART 6

AS OF 31 DECEMBER 2015, PAID & OUTSTANDING AS REPORTED, NO IBNR RESERVE ADDED

## Average Claim cost per gross ton size group

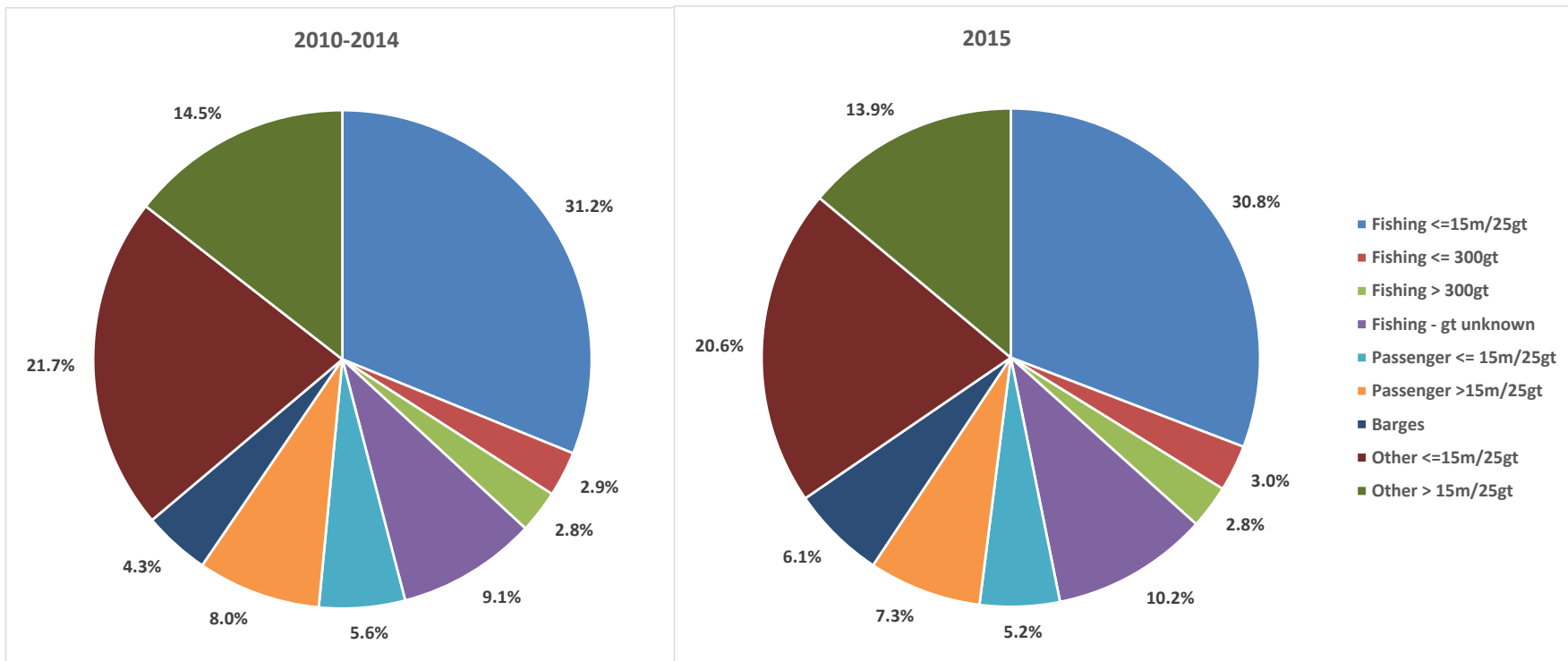


2010-2012	82,810	149,132	343,230	302,373	637,524	1,114,811
2013-2015	94,235	231,026	347,236	301,584	636,288	1,428,177
2010-2015	88,161	187,332	345,139	302,021	636,968	1,266,329

# 2015 NOMIS – COASTAL HULL – PART 7

AS OF 31 DECEMBER 201R

## Number of vessels for selected vessel type & size groups by year of exposure



Total number of vessels:

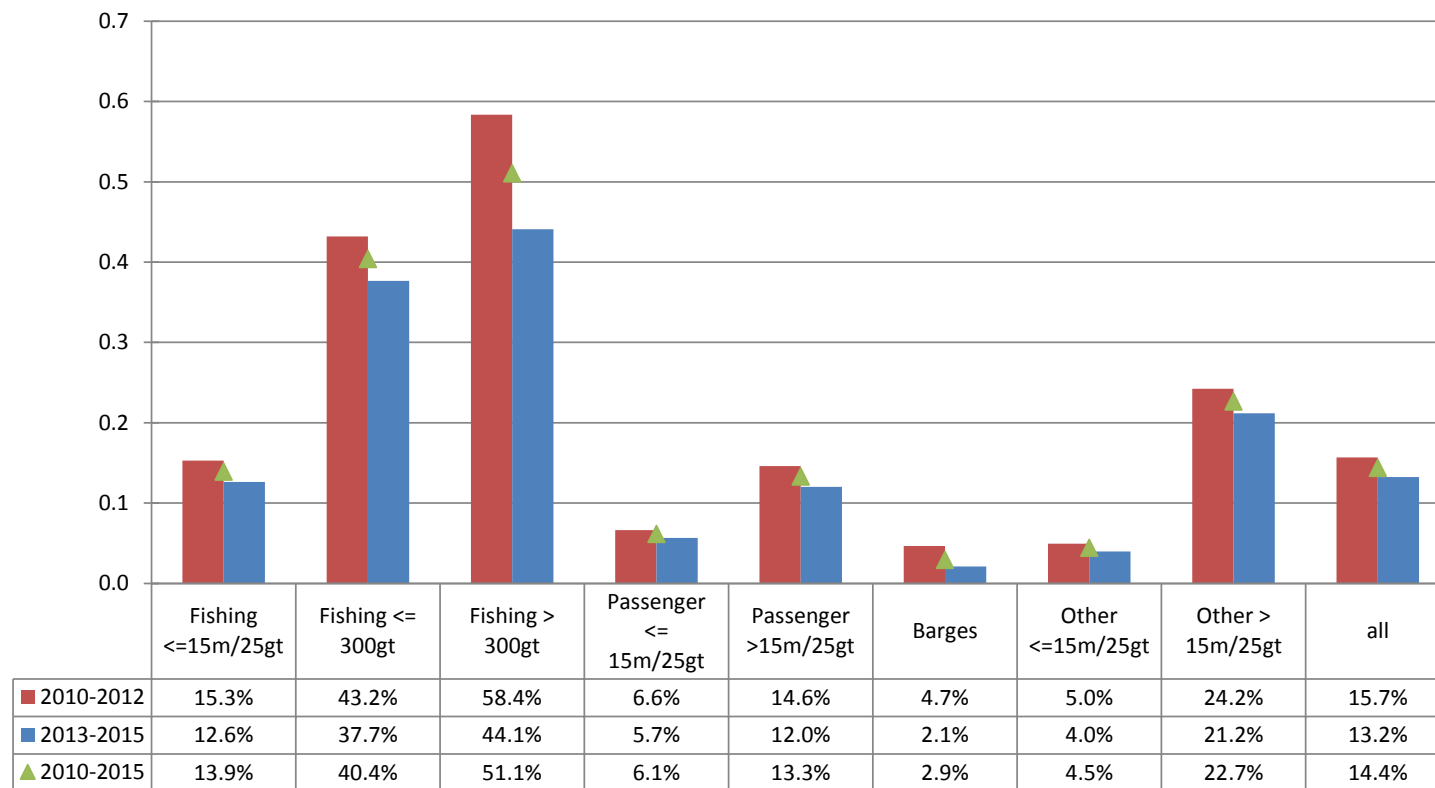
2010-2014: 55,335

2015: 11,743

# 2015 NOMIS – COASTAL HULL – PART 7

AS OF 31 DECEMBER 2015, PAID & OUTSTANDING AS REPORTED, NO IBNR RESERVE ADDED

## Claims frequency, selected coastal vessel type & size groups

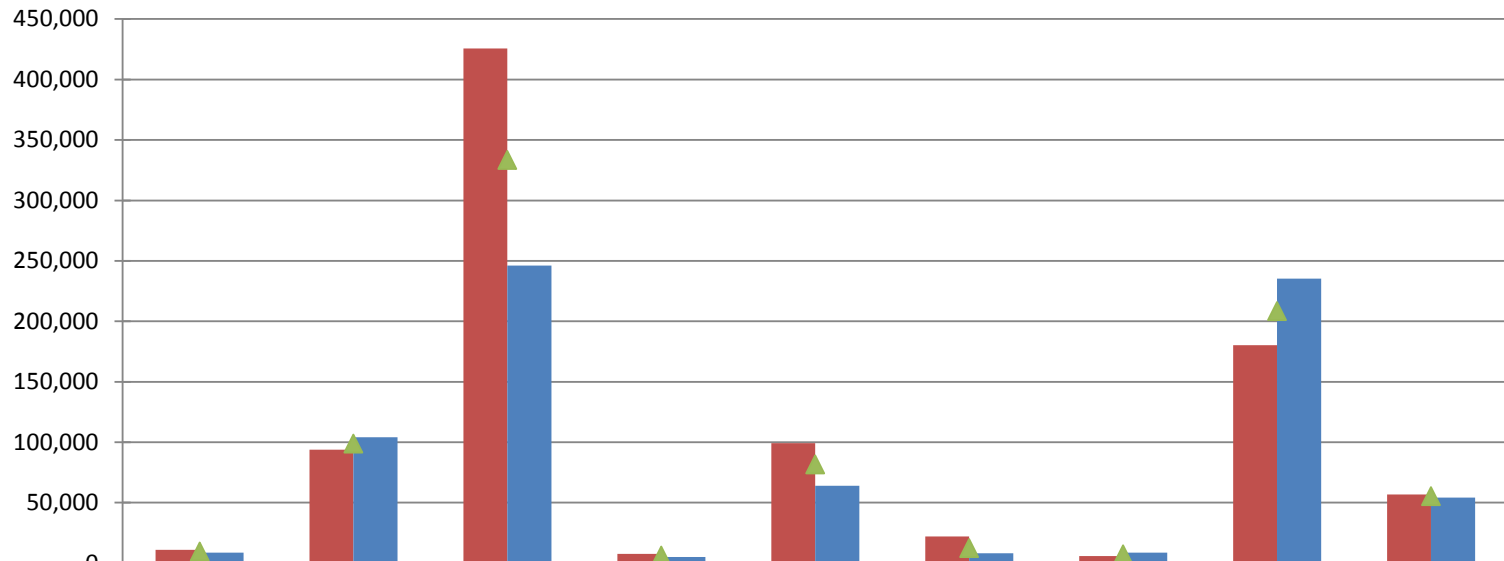


Claims < 100.000 NOK account for nearly half of all claims. Registration of these may vary over time and by company and will thus influence the registered frequency. In addition any increase/decrease of insurance deductibles has impact on the registered frequency

# 2015 NOMIS – COASTAL HULL – PART 7

AS OF 31 DECEMBER 2015, PAID & OUTSTANDING AS REPORTED, NO IBNR RESERVE ADDED

## Claim per vessel, selected coastal vessel type & size groups

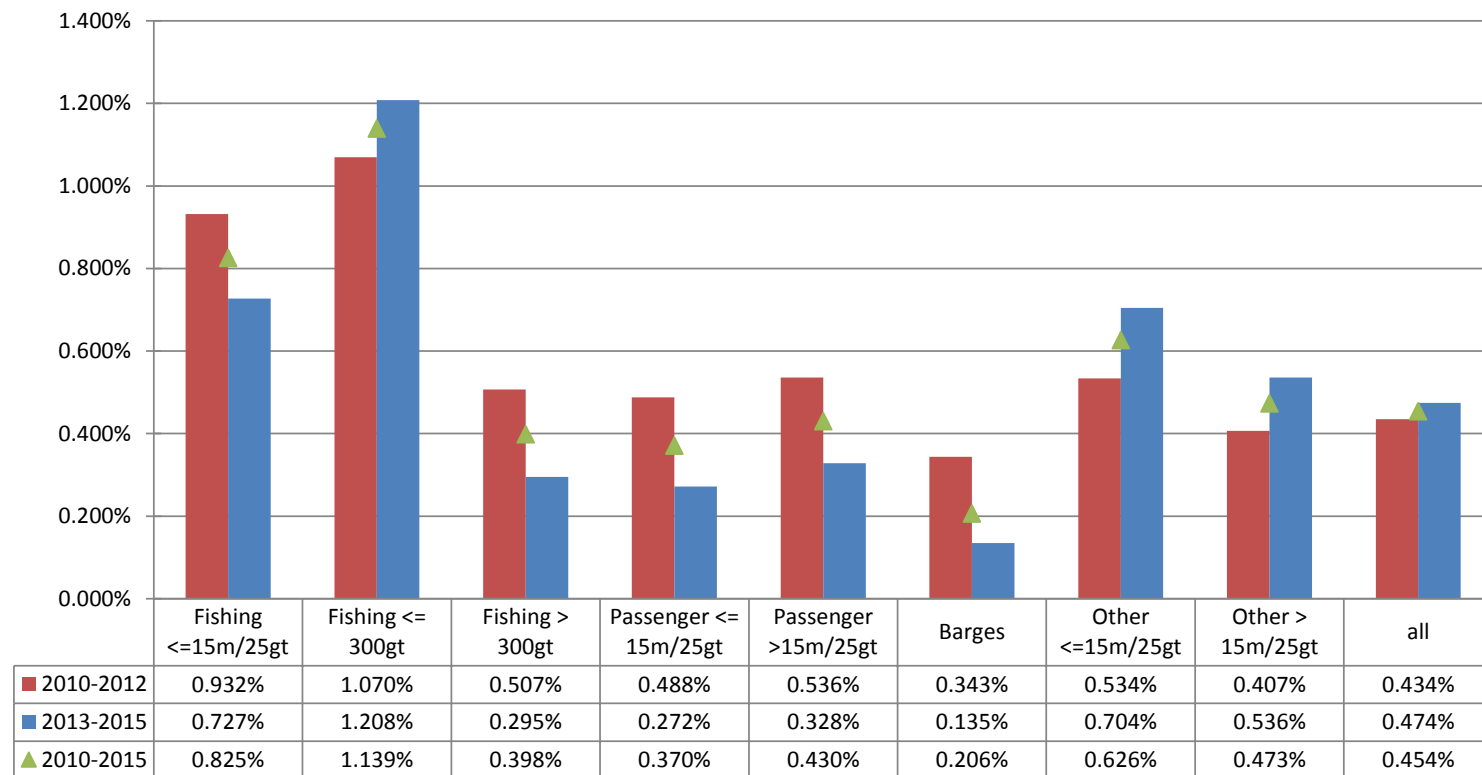


	Fishing <=15m/25gt	Fishing <= 300gt	Fishing > 300gt	Passenger <= 15m/25gt	Passenger >15m/25gt	Barges	Other <=15m/25gt	Other > 15m/25gt	all
■ 2010-2012	10,861	93,689	425,586	7,612	99,228	22,069	5,894	180,167	56,671
■ 2013-2015	8,545	103,955	246,122	4,956	64,034	8,022	8,673	235,230	54,165
▲ 2010-2015	9,661	98,885	333,683	6,268	81,757	12,567	7,326	208,542	55,357

# 2015 NOMIS – COASTAL HULL – PART 7

AS OF 31 DECEMBER 2015, PAID & OUTSTANDING AS REPORTED, NO IBNR RESERVE ADDED

## Claim per Sum Insured, selected coastal vessel type and size groups

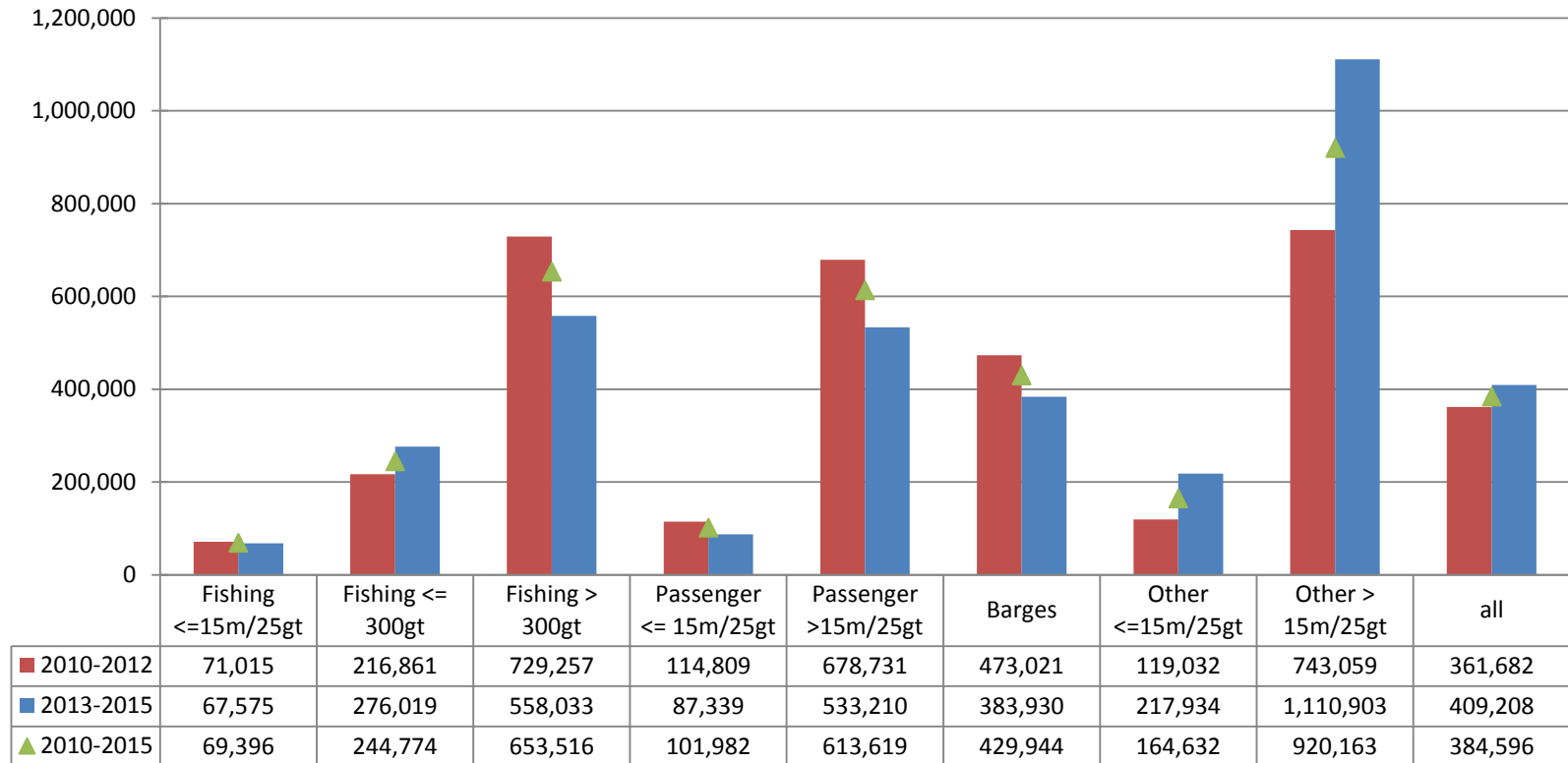




# 2015 NOMIS – COASTAL HULL – PART 7

AS OF 31 DECEMBER 2015, PAID & OUTSTANDING AS REPORTED, NO IBNR RESERVE ADDED

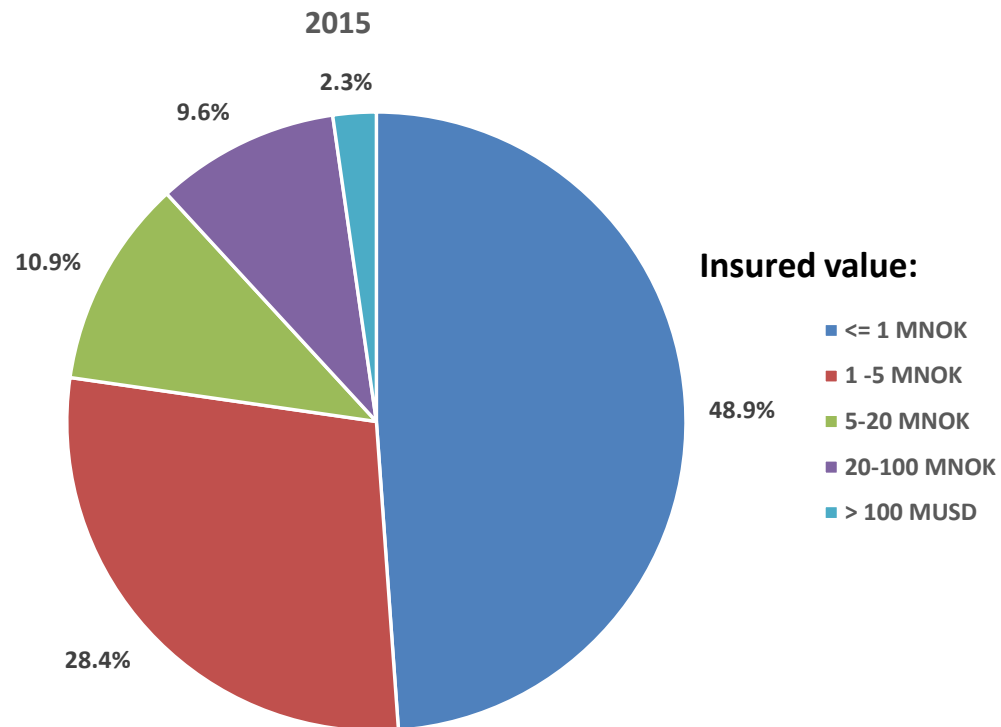
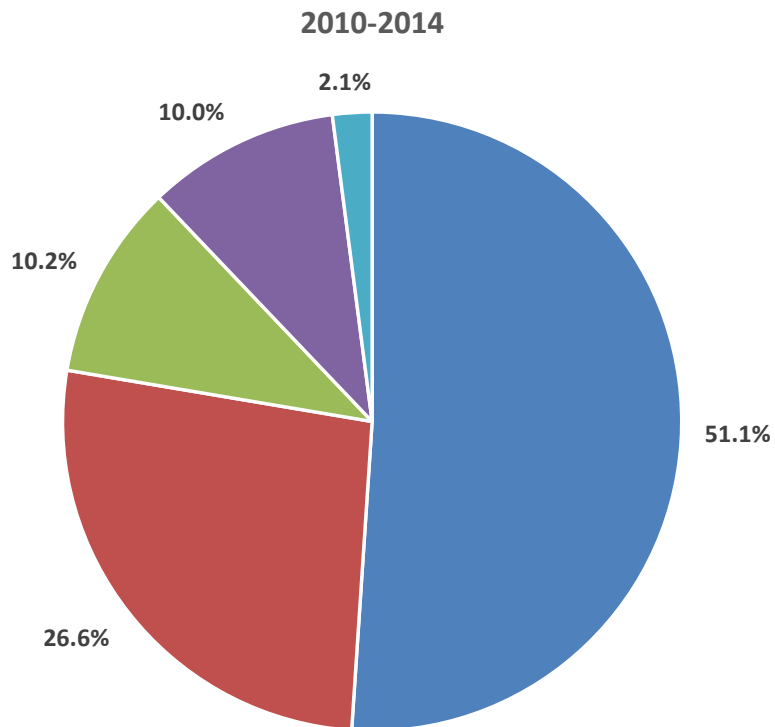
## Average claim cost, selected coastal vessel type & size groups



# 2015 NOMIS – COASTAL HULL – PART 8

AS OF 31 DECEMBER 2015

## Number of vessels by insured value (SI) layer by year of exposure



### Insured value:

- <= 1 MNOK
- 1 - 5 MNOK
- 5-20 MNOK
- 20-100 MNOK
- > 100 MUSD

Total number of vessels:

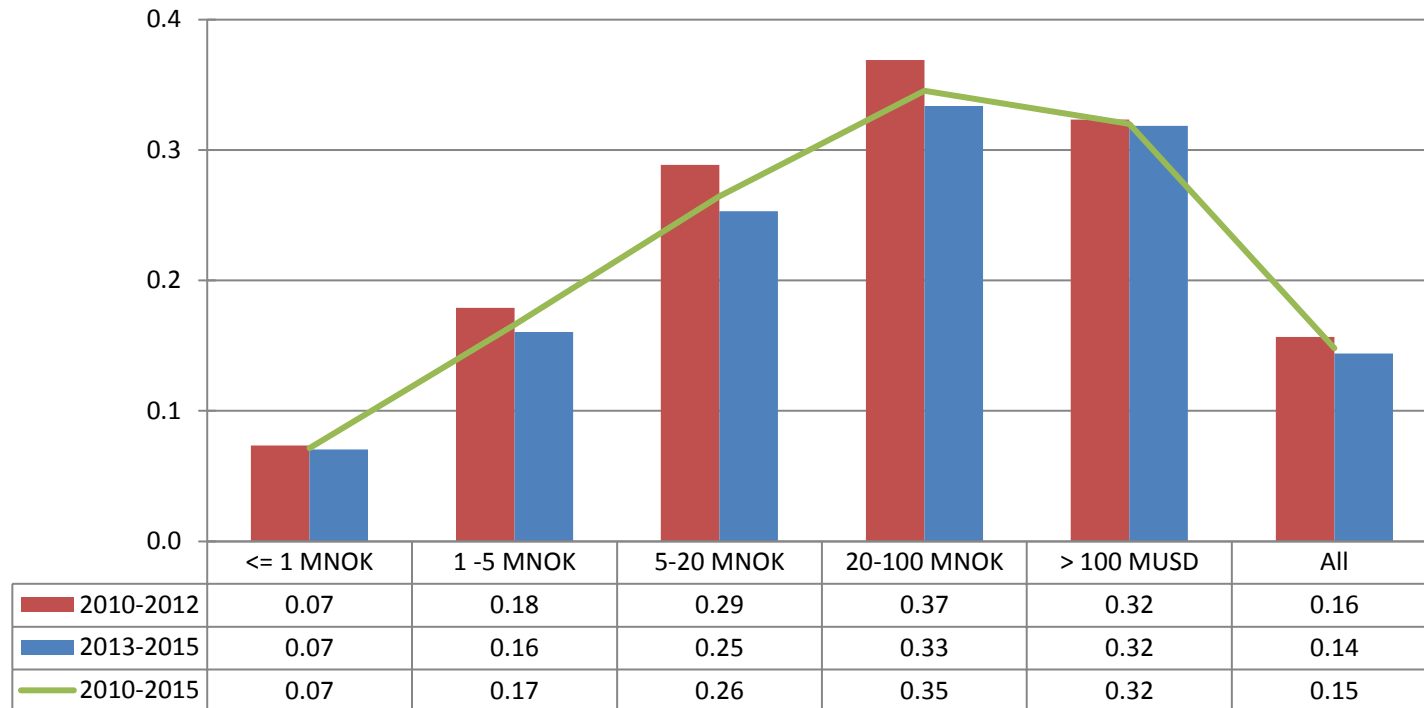
2010-2014: 54,099

2015: 11,591

# 2015 NOMIS – COASTAL HULL – PART 8

AS OF 31 DECEMBER 2015, PAID & OUTSTANDING AS REPORTED, NO IBNR RESERVE ADDED

## Claims frequency per Sum Insured layer

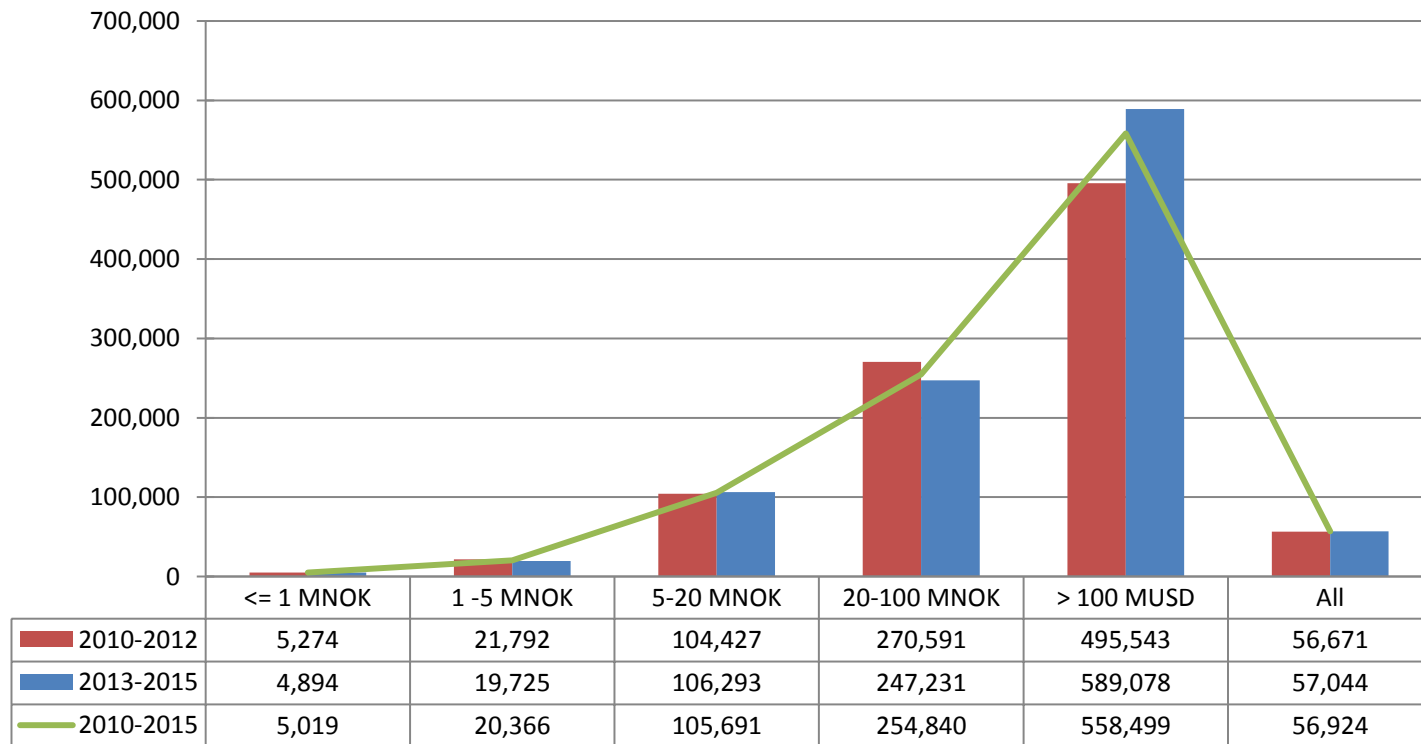


Claims < 10.000 USD account for nearly half of all claims. Registration of these may vary over time and by company and will thus influence the registered frequency. In addition any increase/decrease of insurance deductibles has impact on the registered frequency

# 2015 NOMIS – COASTAL HULL – PART 8

AS OF 31 DECEMBER 2015, PAID & OUTSTANDING AS REPORTED, NO IBNR RESERVE ADDED

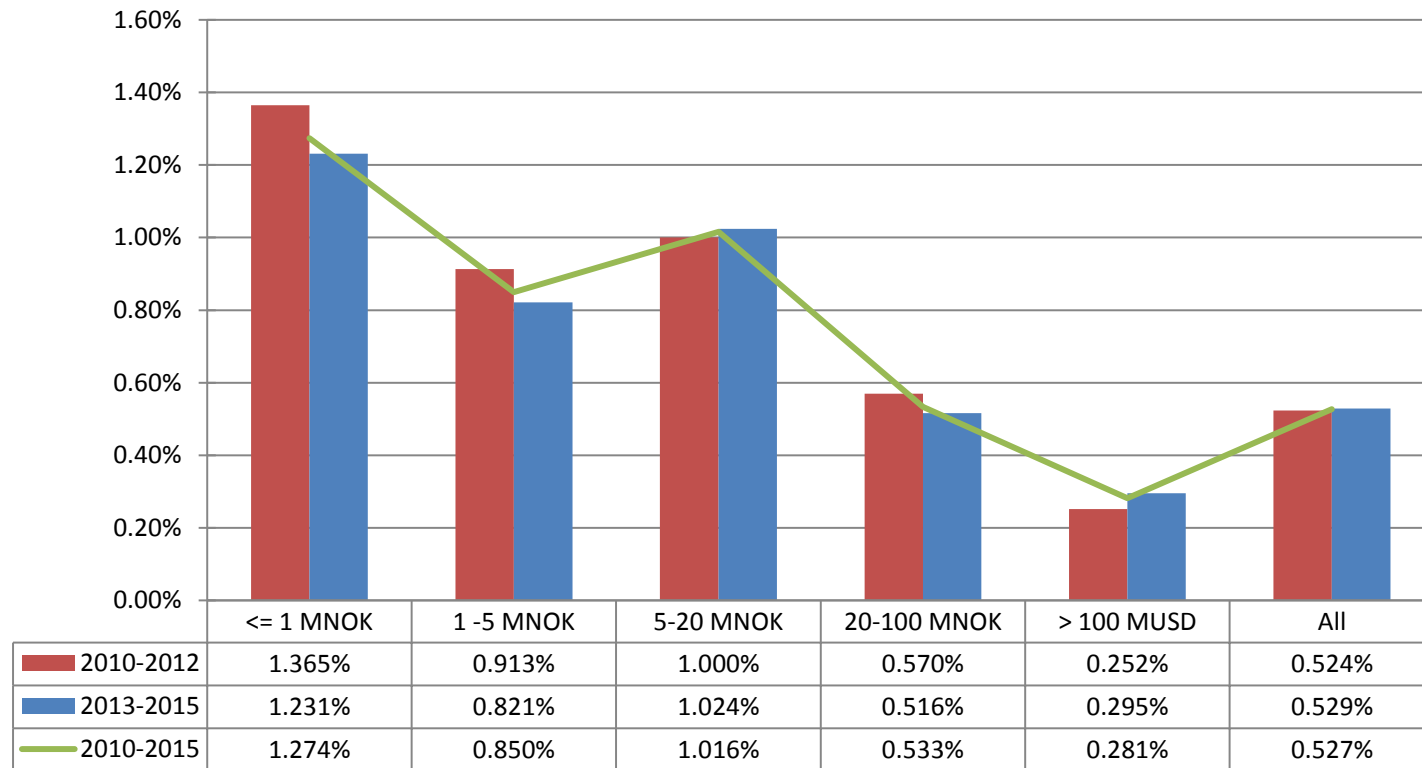
## Claim per vessel per Sum Insured layer



# 2015 NOMIS – COASTAL HULL – PART 8

AS OF 31 DECEMBER 2015, PAID & OUTSTANDING AS REPORTED, NO IBNR RESERVE ADDED

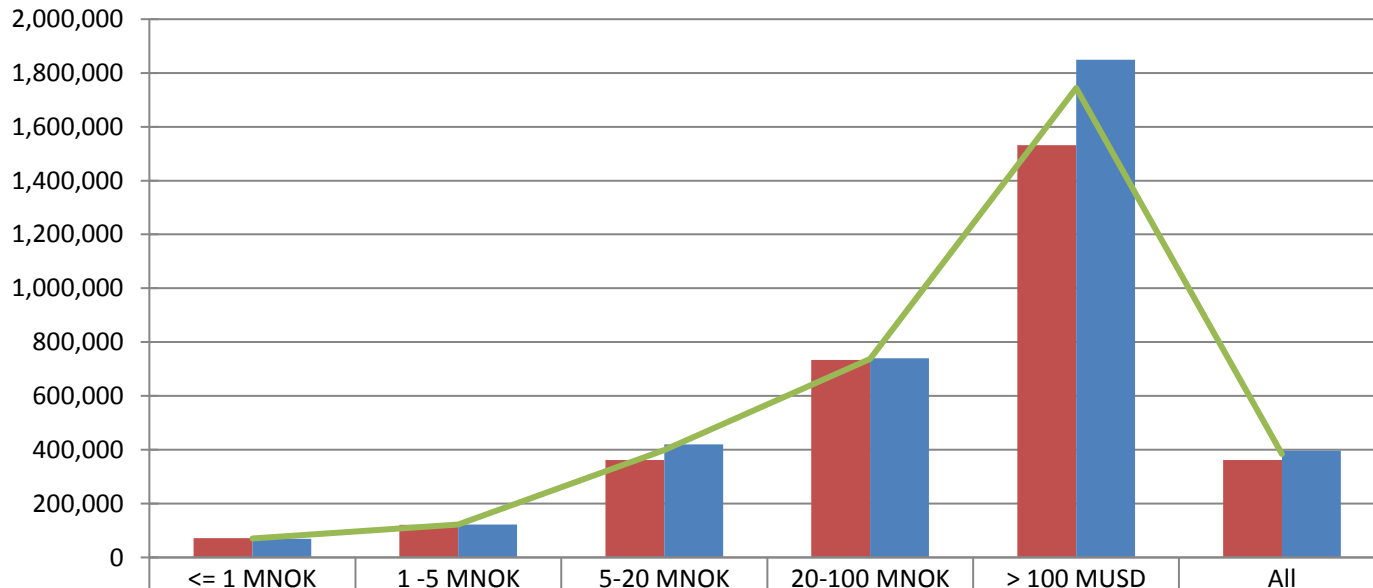
## Claim per Sum Insured per Sum Insured layer



# 2015 NOMIS – COASTAL HULL – PART 8

AS OF 31 DECEMBER 2015, PAID & OUTSTANDING AS REPORTED, NO IBNR RESERVE ADDED

## Average Claim cost per Sum Insured layer



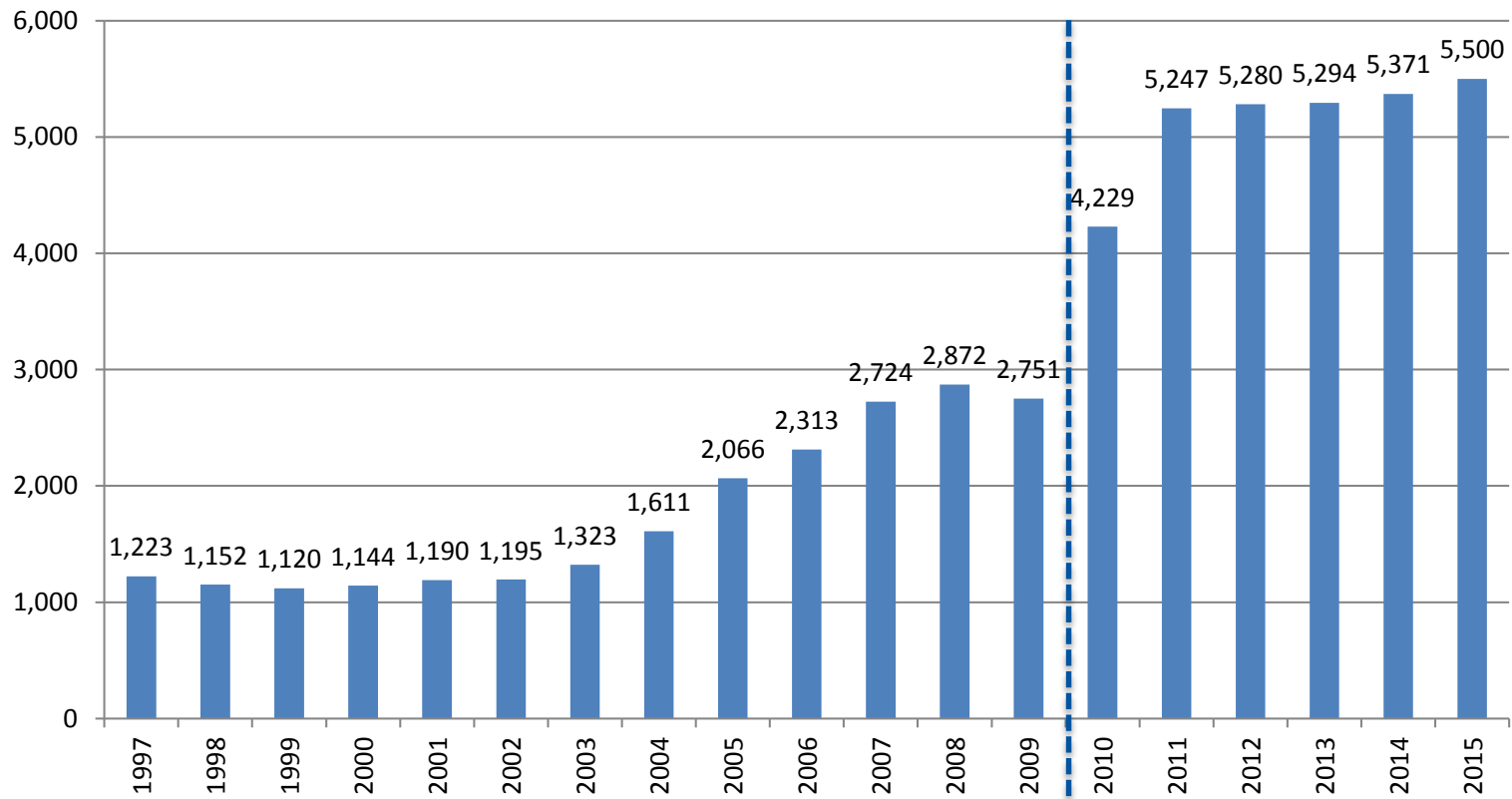
2010-2012	71,852	121,814	361,947	733,362	1,531,884	361,682
2013-2015	69,531	122,957	420,127	740,467	1,849,228	396,314
2010-2015	70,315	122,576	399,639	737,994	1,744,404	384,498

# 2015 NOMIS – FISHING VESSELS – PART 9

AS OF 31 DECEMBER 2015

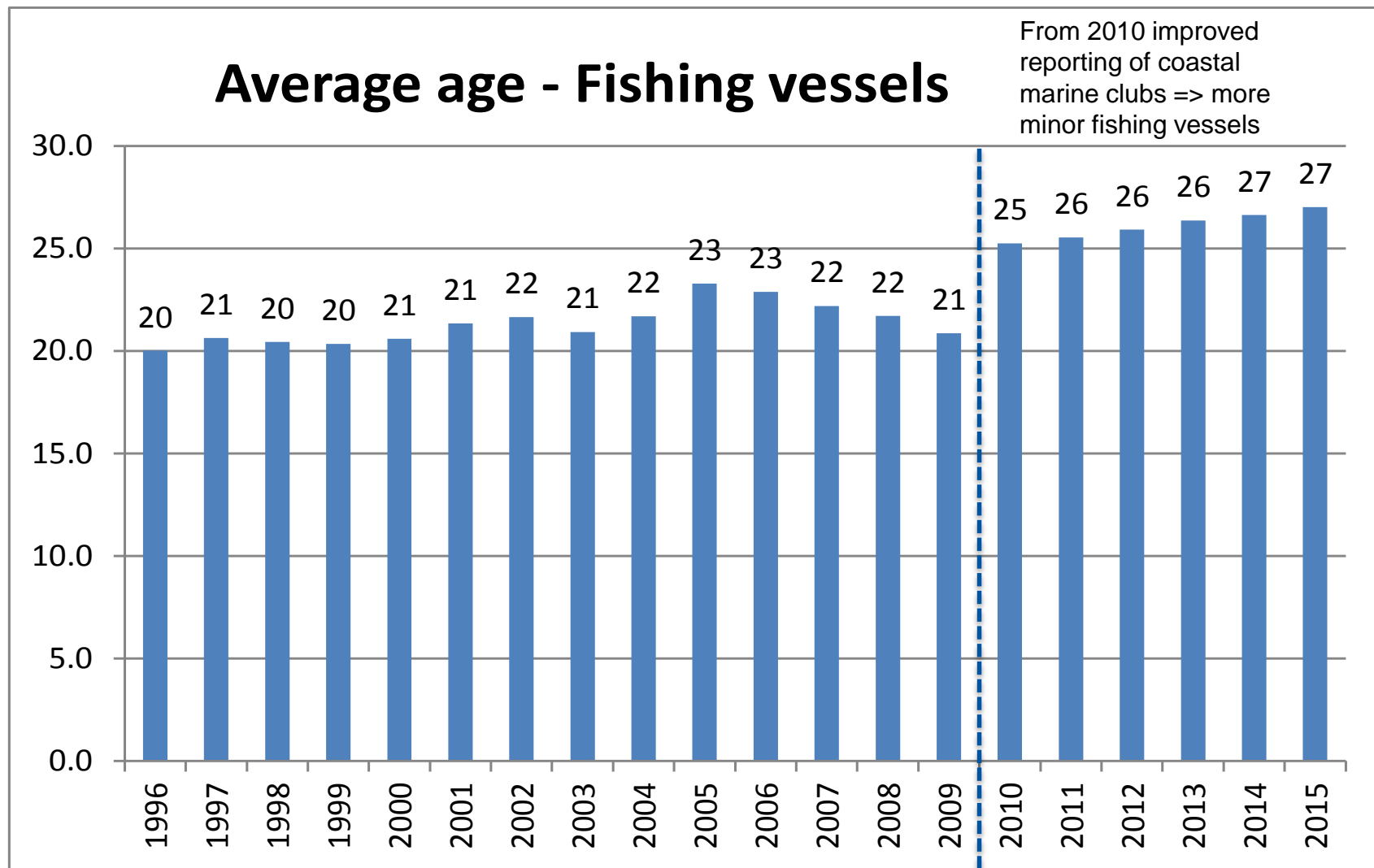
Increased impact of fishing vessels in coastal stats from 2010

## Number of fishing vessels, by year of exposure



# 2015 NOMIS – FISHING VESSELS – PART 9

AS OF 31 DECEMBER 2015

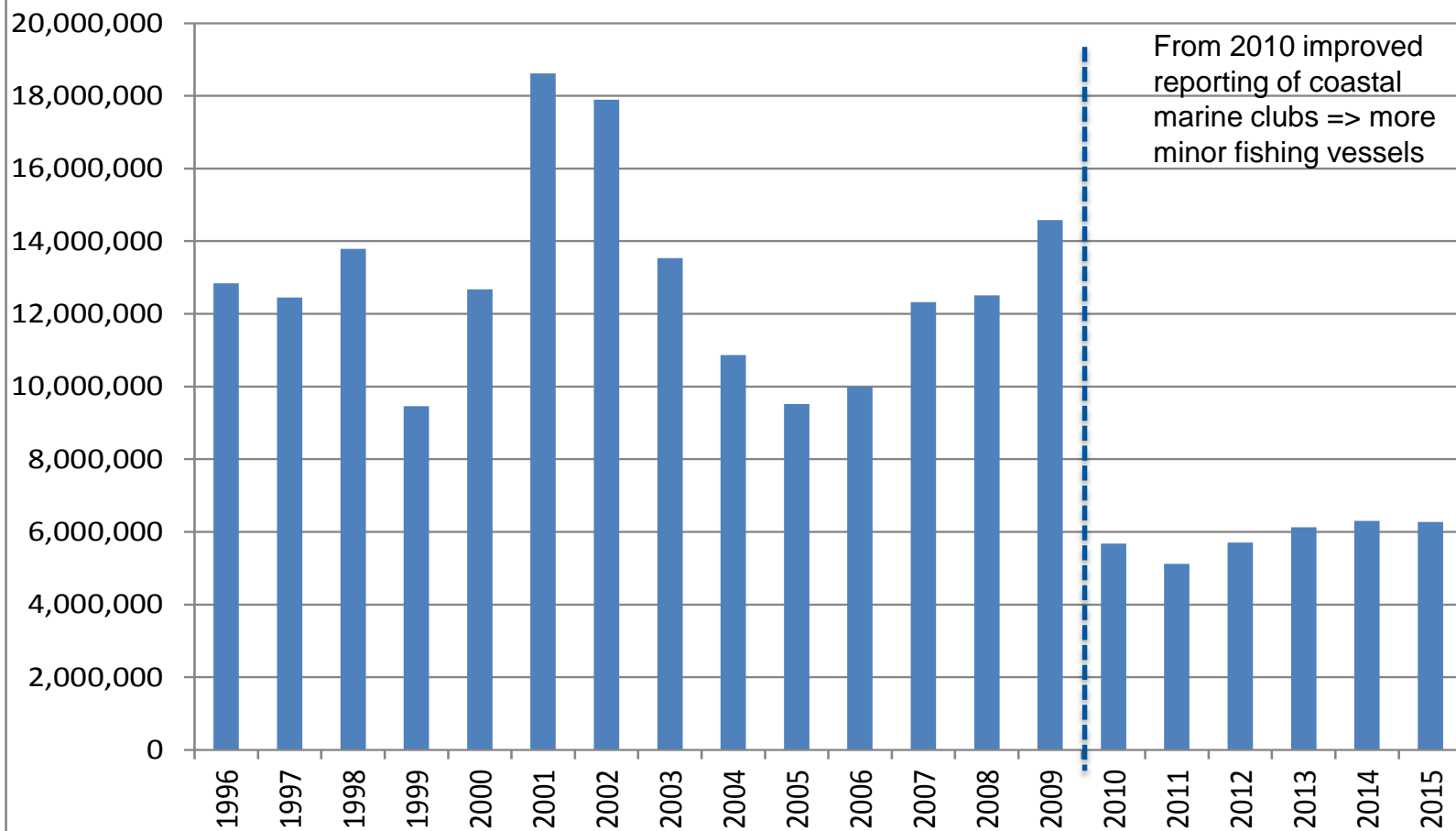




# 2015 NOMIS – FISHING VESSELS – PART 9

AS OF 31 DECEMBER 2015

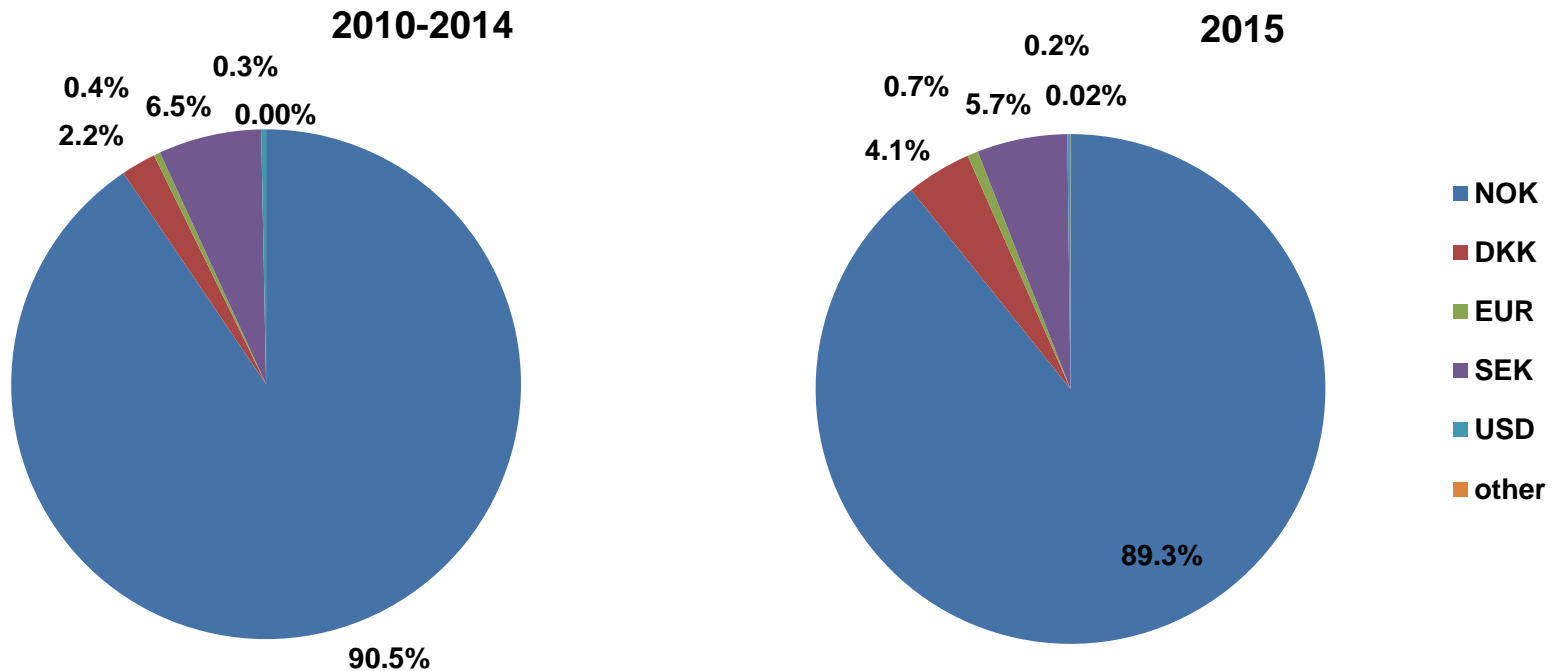
## Average insured value - Fishing vessels



# 2015 NOMIS – FISHING VESSELS – PART 9

AS OF 31 DECEMBER 2015

## Number of vessels by currency (origin of business) by underwriting year



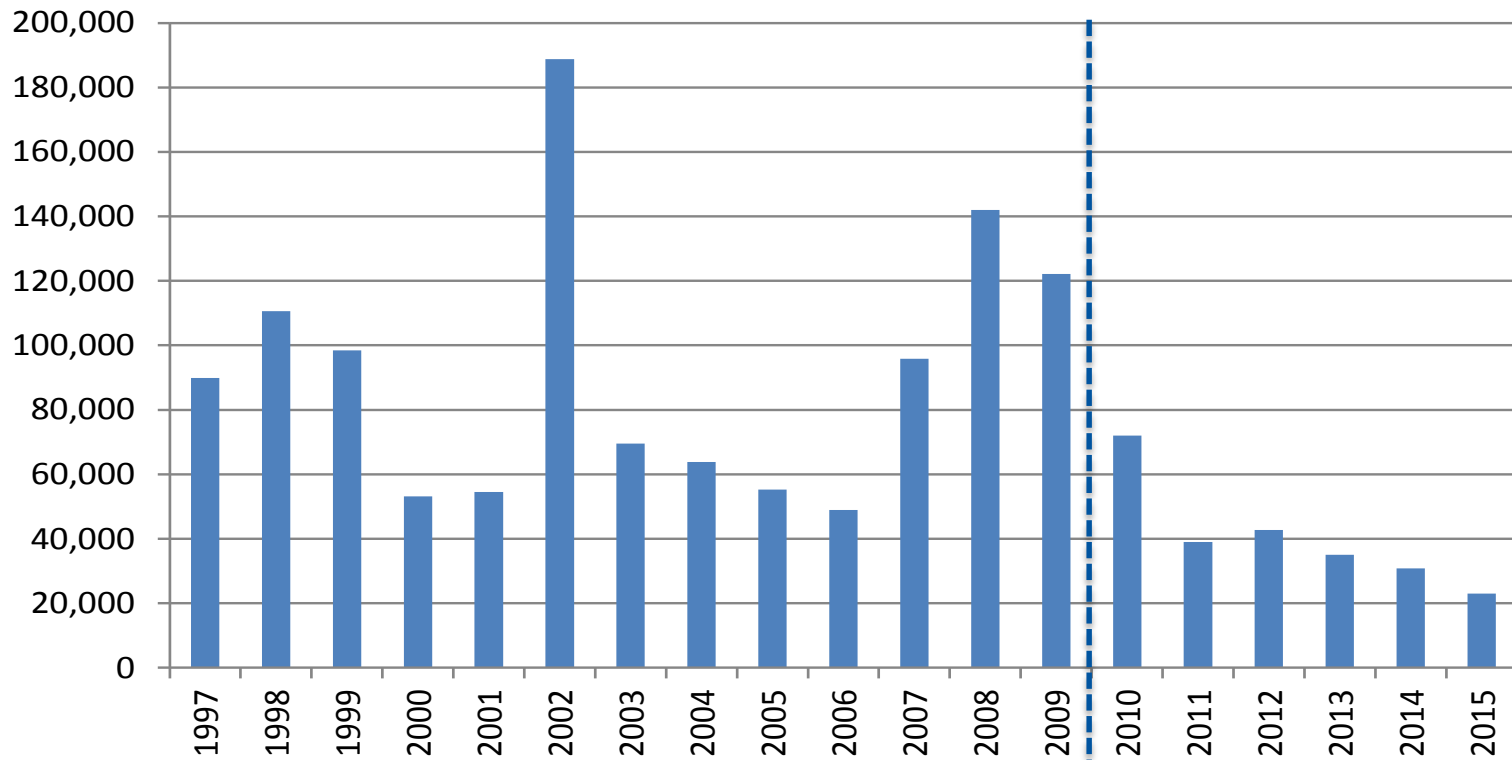
Total number of fishing vessels:  
2010-2014: 26,502

2015: 5,551

# 2015 NOMIS – FISHING VESSELS – PART 9

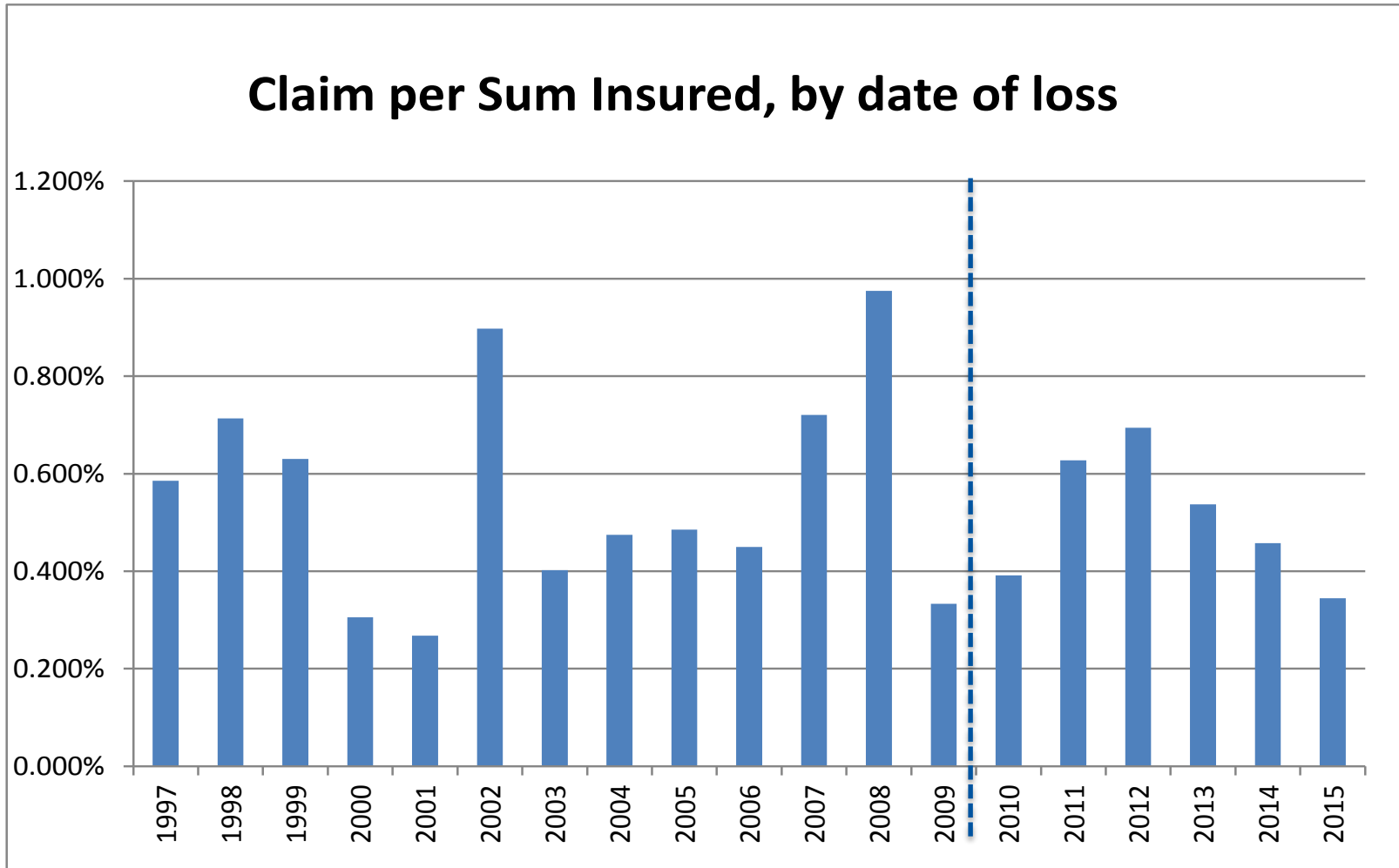
AS OF 31 DECEMBER 2015, PAID & OUTSTANDING AS REPORTED, NO IBNR RESERVE ADDED

## Claim per vessel, by date of loss



# 2015 NOMIS – FISHING VESSELS – PART 9

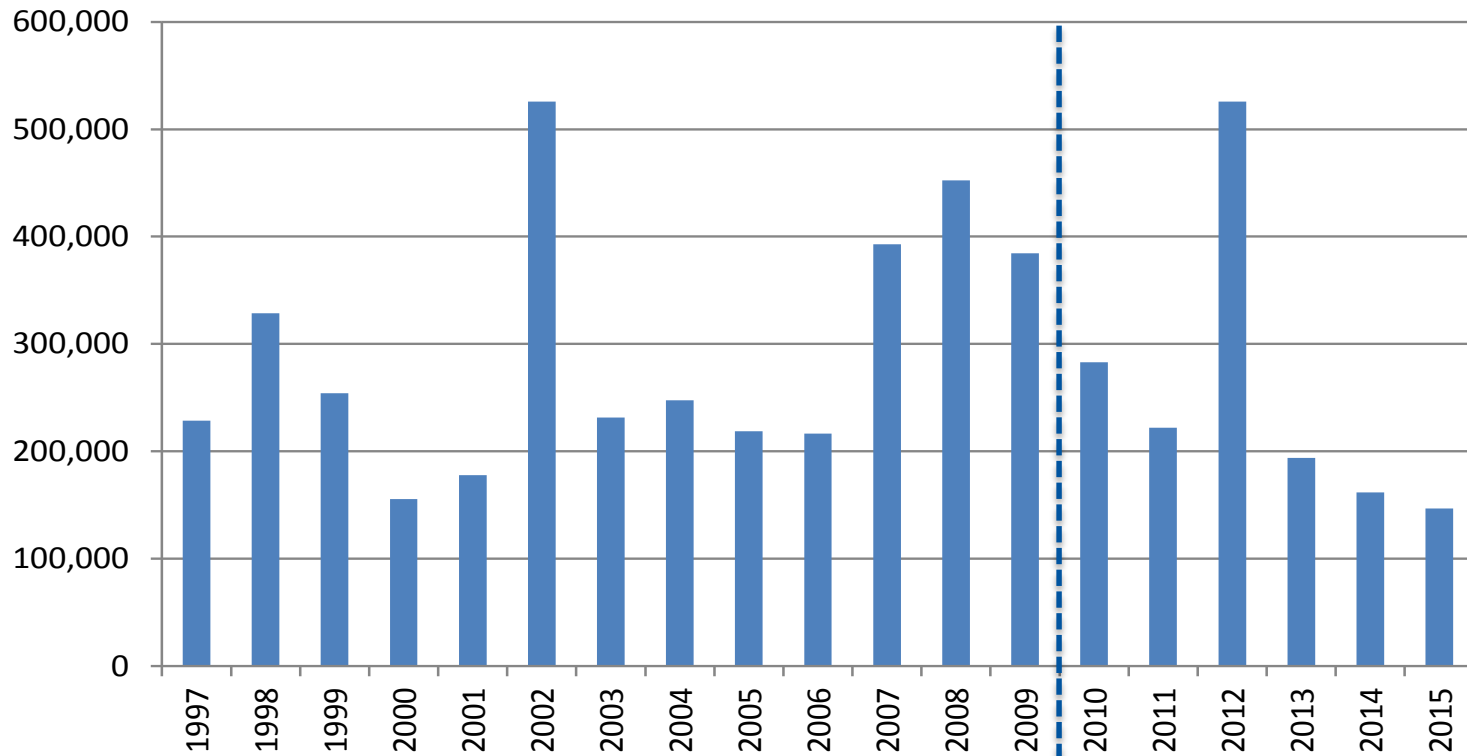
AS OF 31 DECEMBER 2015, PAID & OUTSTANDING AS REPORTED, NO IBNR RESERVE ADDED



# 2015 NOMIS – FISHING VESSELS – PART 9

AS OF 31 DECEMBER 2015, PAID & OUTSTANDING AS REPORTED, NO IBNR RESERVE ADDED

## Average claim cost, by date of loss



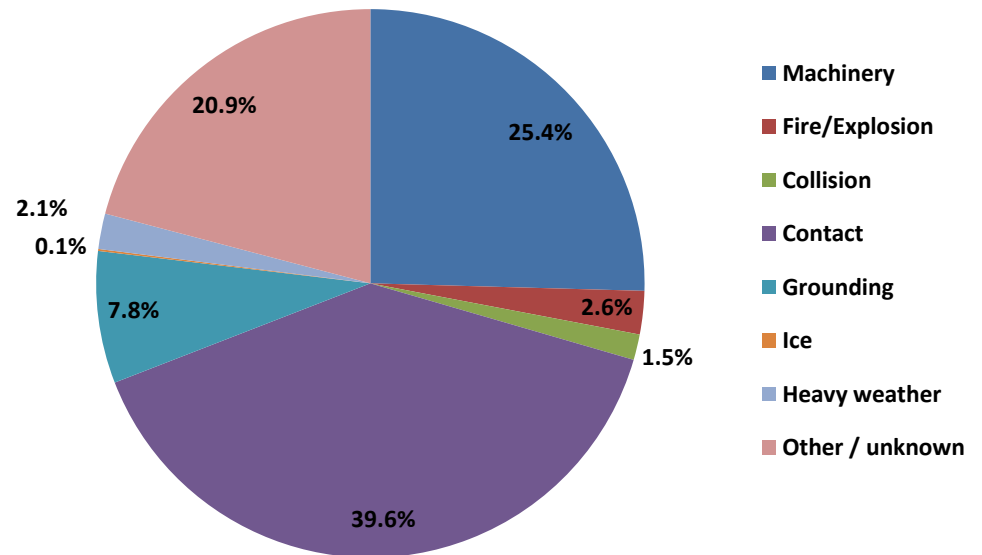
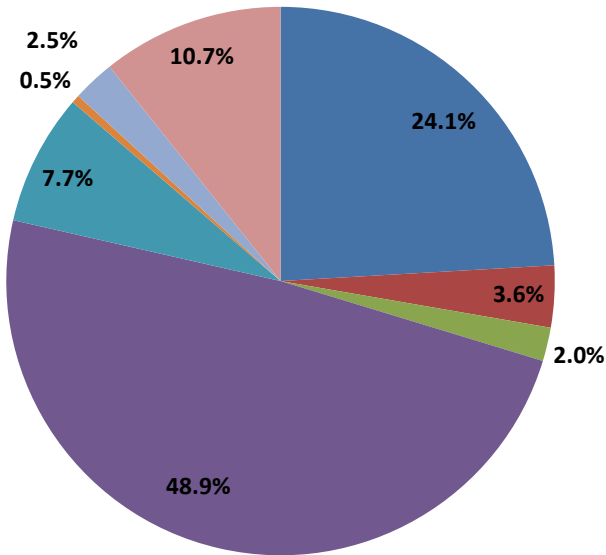
# 2015 NOMIS – FISHING VESSELS – PART 9

AS OF 31 DECEMBER 2015, PAID & OUTSTANDING AS REPORTED, NO IBNR RESERVE ADDED

## Claims by Claims type – Number of claims

2010-2014

2015



Total number of claims:

2010-2014: 4,945

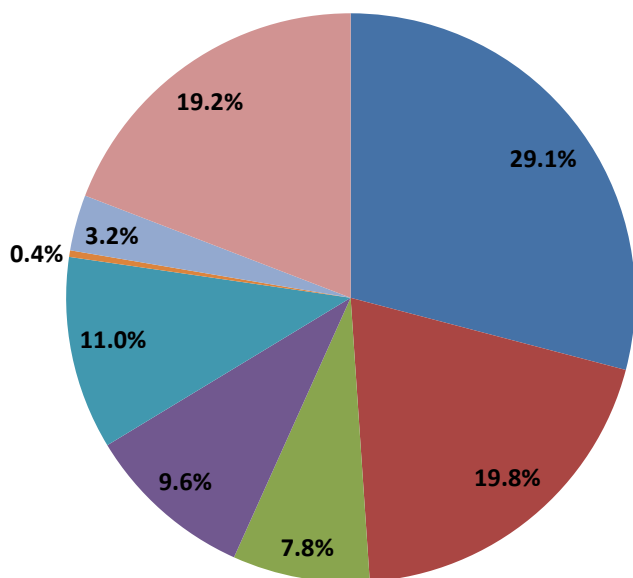
2015: 861

# 2015 NOMIS – FISHING VESSELS – PART 9

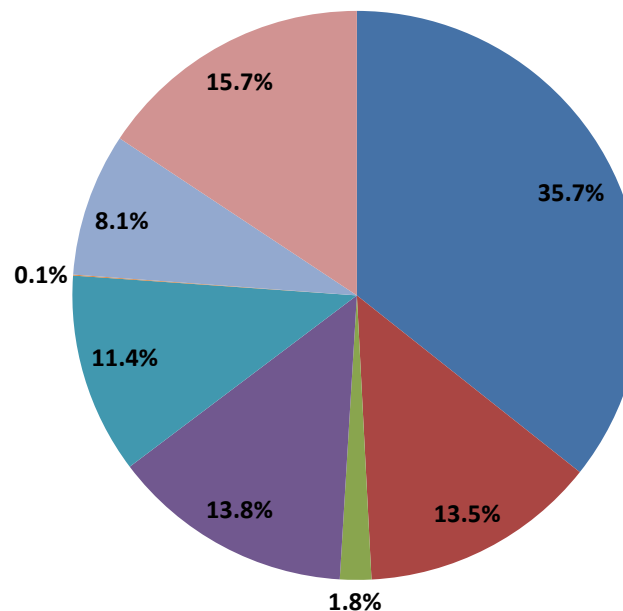
AS OF 31 DECEMBER 2015, PAID & OUTSTANDING AS REPORTED, NO IBNR RESERVE ADDED

## Claims by Claims type – Cost of claims

2010-2015



2015



- Machinery
- Fire/Explosion
- Collision
- Contact
- Grounding
- Ice
- Heavy weather
- Other / unknown

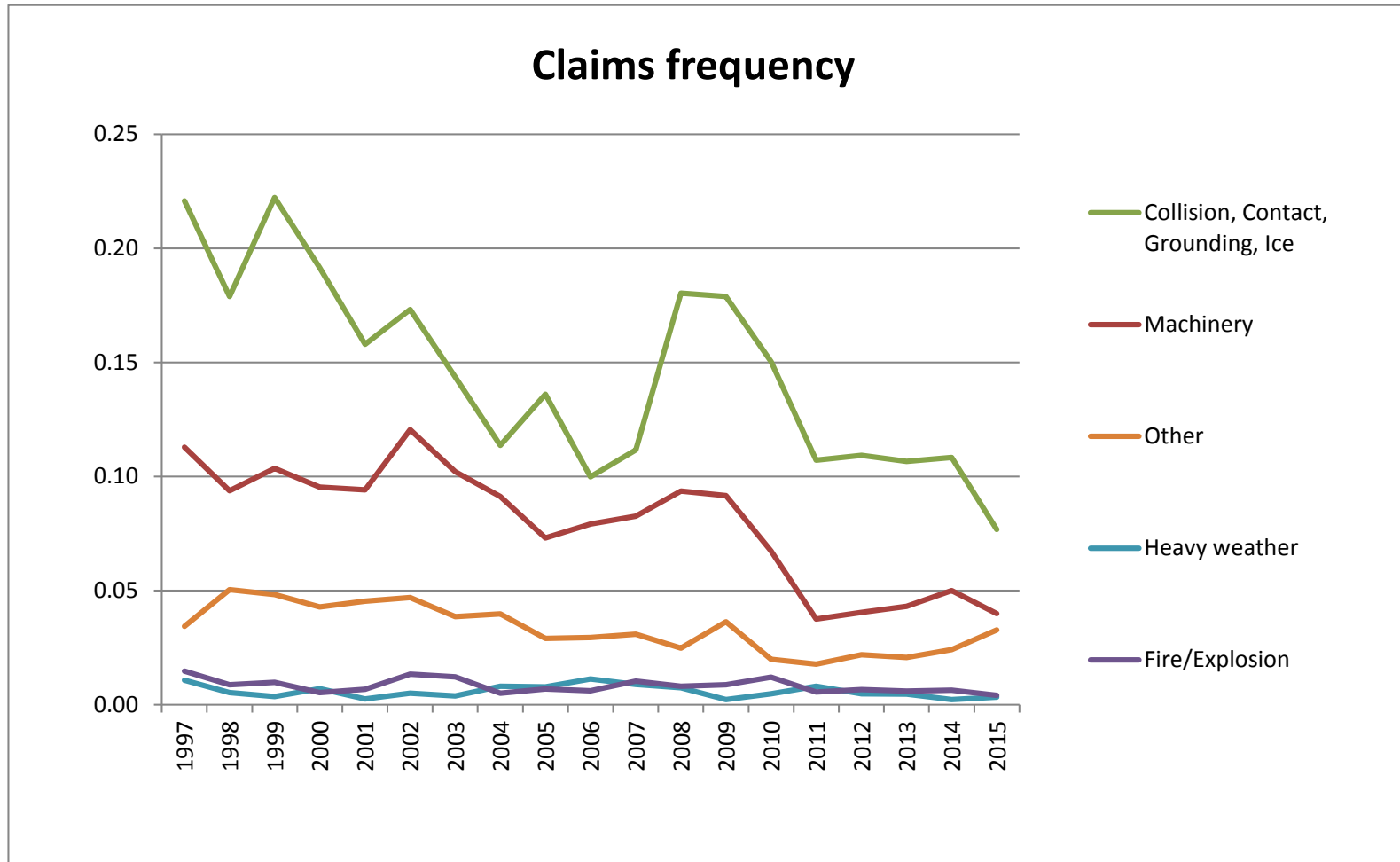
Total cost in NOK million:

2010-2014: 976.4

2015: 126.3

# 2015 NOMIS – FISHING VESSELS – PART 9

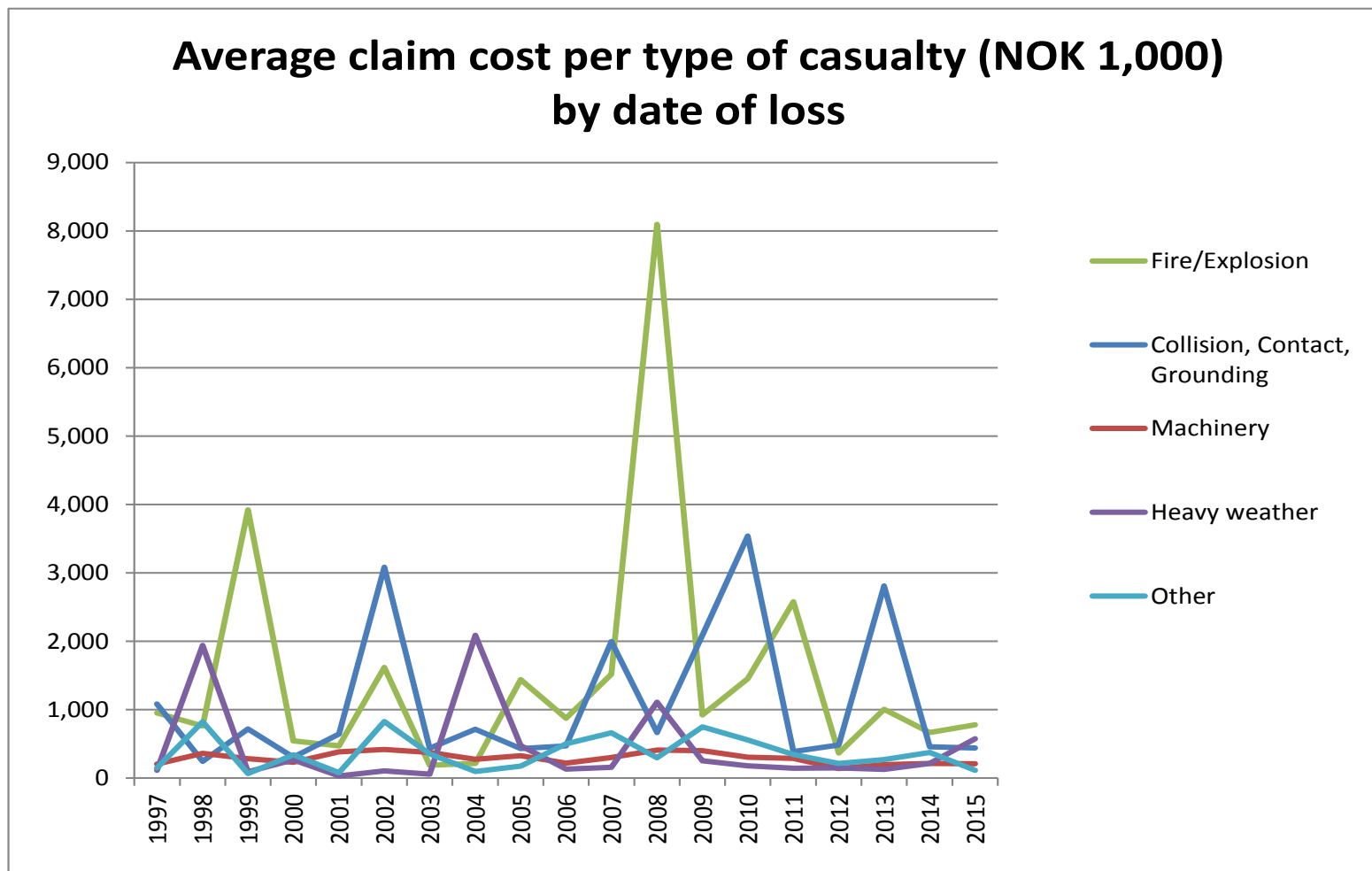
AS OF 31 DECEMBER 2015, PAID & OUTSTANDING AS REPORTED, NO IBNR RESERVE ADDED





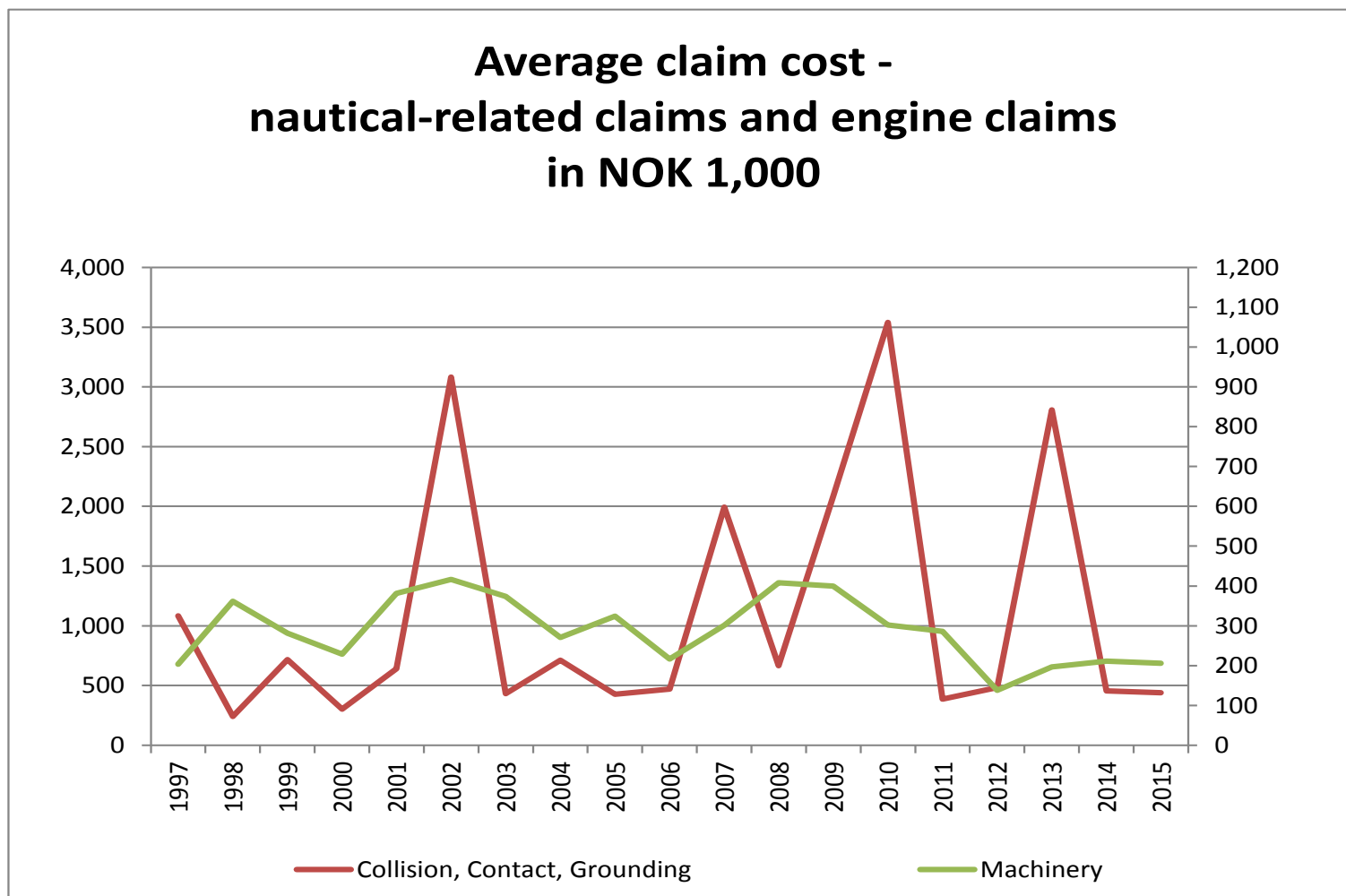
# 2015 NOMIS – FISHING VESSELS – PART 9

AS OF 31 DECEMBER 2015, PAID & OUTSTANDING AS REPORTED, NO IBNR RESERVE ADDED



# 2015 NOMIS – FISHING VESSELS – PART 9

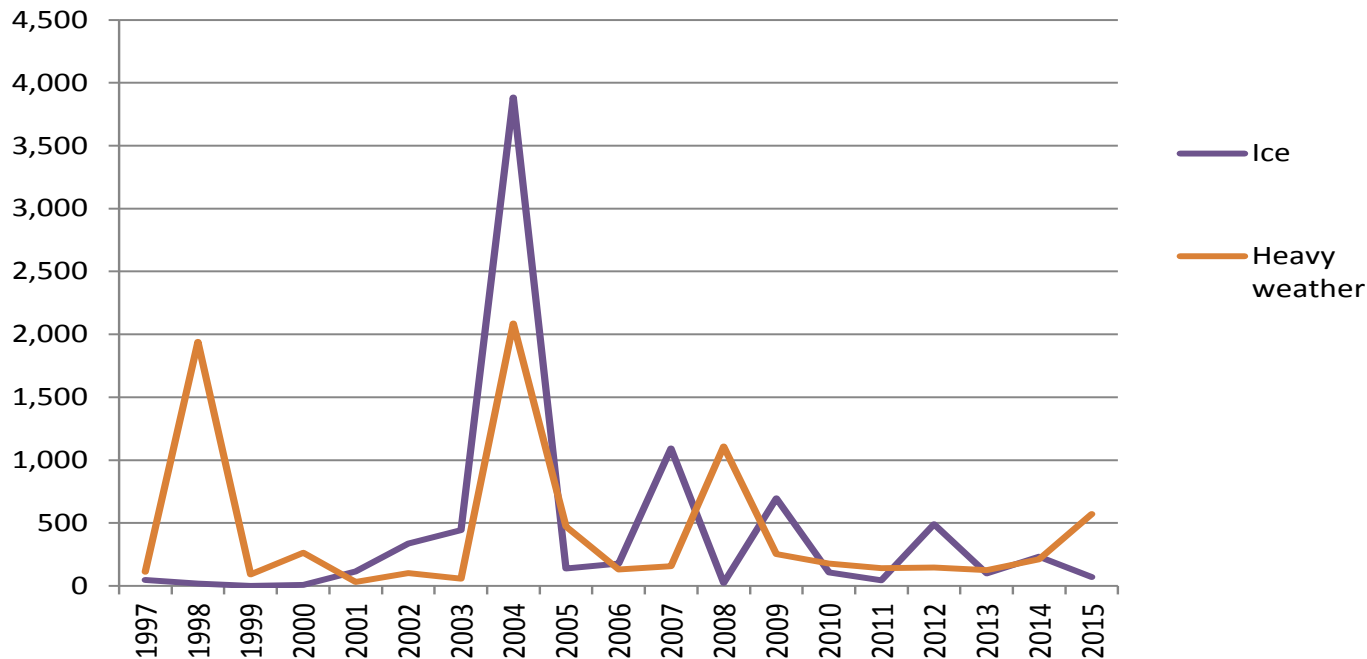
AS OF 31 DECEMBER 2015, PAID & OUTSTANDING AS REPORTED, NO IBNR RESERVE ADDED



# 2015 NOMIS – FISHING VESSELS – PART 9

AS OF 31 DECEMBER 2015, PAID & OUTSTANDING AS REPORTED, NO IBNR RESERVE ADDED

**Average claim cost -  
Ice and weather-related claims  
in NOK 1,000**



# NOMIS REPORTS 2015:

Cefor marine insurance statistics publications at [www.cefor.no/statistics](http://www.cefor.no/statistics) :

- Cefor Annual Report 2015
- The 2015 Cefor NoMIS OCEAN Hull Report
- The 2015 Cefor NoMIS COASTAL Hull Report
- Half-yearly Claims Update Fact Sheet
- All Cefor statistics are available for download from the statistics section of the Cefor website: [www.cefor.no/statistics](http://www.cefor.no/statistics)  
(check the “NoMIS” section – Nordic Marine Insurance Statistics)

Other marine insurance statistics:

- IUMI (International Union of Marine Insurance) – Statistics issued by IUMI’s Facts & Figures Committee:  
<http://www.iumi.com/index.php/committees/facts-a-figures-committee/statistics>