



The 2010 Cefor NoMIS Report

Nordic Marine Insurance Statistics

Underwriting Years 1996–2010, as of 31 December 2010

If not indicated otherwise, data in this report is on **accident year basis**
(i.e. claims allocated to the calendar year in which the accident occurred)

All **figures as reported by 31 December 2010**
(i.e. without "IBNR" loading for claims not yet registered or incurred by this date)

Included are only **vessels with a registered IMO-nr.**
(i.e. not small coastal tonnage)

Issued by The Nordic Association of Marine Insurers (Cefor)



2010 Nordic Marine Insurance Statistics – Part

Part 1 – Introduction

- Contents
- NoMIS
- Explanations

Part 2 – NoMIS position in the Global insurance market

- Global Marine Hull Insurance Market 2009
- Cefor Marine Hull Insurance Market 2010

Part 3 – NoMIS portfolio Key figures

- Number of vessels by year of exposure
- Development of average insured values and gross ton
- Change in av. insured value, renewed vessels, by month of renewal
- Average age
- Average standard deductible
- Average change in standard deductible, renewed vessels
- Claims in claim bands – claim per vessel
- Number and cost of claims by type
- Claim frequency
- Claim per vessel
- Claim per Sum Insured
- Claim per gross ton
- Claim per Vessel – accumulated quarterly development
- Claim frequency – accumulated quarterly development
- Claim per vessel as reported per 4th quarter of each uw year



2010 Nordic Marine Insurance Statistics – Part 1

Part 4 – Key figures by age group

- Distribution of number of vessels
- Claim frequency
- Claim per vessel
- Claim per Sum Insured
- Claim per gross ton

Part 5 – Key figures by vessel type group

- Distribution of number of vessels
- Claims frequency
- Claim per vessel
- Claim per Sum Insured
- Claim per gross ton

Part 6 – Key figures by size group

- Distribution of number of vessels
- Claims frequency
- Claim per vessel
- Claim per Sum Insured
- Claim per gross ton



2010 Nordic Marine Insurance Statistics – Part 1

Part 7 – Distribution by flag and classification society

- Distribution of number of vessels by flag, 16 largest
- Distribution of number of vessels by classification society, 6 largest

Part 8 – Exposure curves

- Sum Insured bands (<5, <20, <100, and >100 Mio USD)
 - Partial claims only
 - All claims
- Explanations

Part 9 – Cost Driving Factors Inflation Index (by date of loss)

Legal disclaimer Cefor provides the statistics material in this presentation for general information purposes only. All key figures are derived from the Cefor portfolio, which reflects a minor part of the world fleet, the selection of ships being biased by Norwegian underwriting preferences. Therefore Cefor can accept no responsibility and shall not be liable for any loss which may arise from reliance upon the information provided.

With reference to [Commission Regulation \(EU\) No 267/2010 of 24 March 2010](#) (EU Block Exemption), it is further stressed that the statistical data presented in this publication is non-binding in its character.



2010 Nordic Marine Insurance Statistics – Part 1

The **Nordic Marine Insurance Statistics (NoMIS)** is a joint database project of Cefor members active on the Hull & Machinery market to compile insurance data and vessel characteristics for statistical purposes and administered by Cefor.

Since its foundation in 1985 until 1997, the data was compiled by appointing Cefor a facultative reinsurer to which members of the Norwegian Hull Agreement ceded 0.1% of their H&M insurance. Premium and claims information was exchanged via Borderaux, the lead insurer providing details of each claim. While the Hull Agreement was discontinued in 1996, the statistics cooperation continued.

In 1998 steps were taken to update the NoMIS' database electronically. Thus from December 1999, Cefor could produce up-to-date hull figures on a monthly basis and extend the database substantially by including non-lead business. From 2000, also business back to underwriting year 1995 was updated electronically. In the following years, several new major Cefor members joined the NoMIS cooperation, reporting retrospective data from 1995 underwriting year.

In 2009, data from Gjensidige and Tryg was integrated, including retrospective data back to underwriting years 2000 and 2003 respectively.

By 31st December 2010, in all 157,316 vessel years (vessels with IMO-number) and 48,820 claims were registered on underwriting years 1985 through 2010.

The NoMIS statistics in this report comprise data from the following marine insurers: Bluewater (until 2008), Codan Group (Codan, Denmark and Norway; Trygg-Hansa, Sweden), Gjensidige (coastal), If, Gard, NEMI (until 2009), Norwegian Hull Club, Swedish Club, Tryg (until 2009), Zurich (until 2002).



2010 Nordic Marine Insurance Statistics – Part 1

All amounts are presented in USD.

Rate of exchange applicable to convert the figures from the original currencies into USD:

Premiums: average monthly rate of exchange of the month of transaction

Paid claims: average monthly rate of exchange of the month of transaction

Outstanding claims: average monthly rate of exchange of December 2010

Underwriting year = year in which the insurance policy attaches

All claims are net of any deductibles applicable.

Total Claims = Paid claims + Outstanding claims

TLO (or Total Losses) = claims in excess of 75% of the Sum Insured

Partial Losses = all losses \leq 75% of the Sum Insured

IBNR ("Incurred but not reported") = reserve for claims adjustments and registration backlog



2010 Nordic Marine Insurance Statistics – Part 1

Types of vessels specified

<u>Vessel Type group</u>	<u>Vessels Types included</u>	<u>Lloyds Conf. Index Code</u>
BULK	Bulk, Ore, Cement	BBU, BCB, BCE, BOR, BWC
CAR/RORO	Car Carrier, RoRo	MVE, URC, URR
CARGO	Dry Cargo, General Cargo, Reefers, Pallett Vessels, Animal Transport Vessels	GCT, GGC, GPC, GRF, MLV
CHEM./PRODUCT	Chemical Carriers, Product / Acid / Edible Oil / Fish Oil / Fruit Juice / Wine / Molasses / Waste/ Water Tankers	TAC, TCH, TCO, TEO, TFJ, TFO TMO, TPD, TWA, TWN, TWT
CONTAINER	Container	UCC, UCR
FISHING	Fishing vessels	FFC, FFF, FFP, FFS, FTR,FWF,FWH
LNG/LPG	Gas Carriers LNG, LPG, LNG/LPG	LNG, LPG, LNP
OBO	Combined Vessels Bulk, Ore, Oil	COO, CBO
OTHER	any other ships and floating units, any codes not specifically defined otherwise, like Barges, Cranes, Floating Storage, Floating Production, Pollution Control Vessels, Mud boat, Research vessels, Cable, Seismic Search vessel, Flo/Flo, etc.	

2010 Nordic Marine Insurance Statistics – Part 1

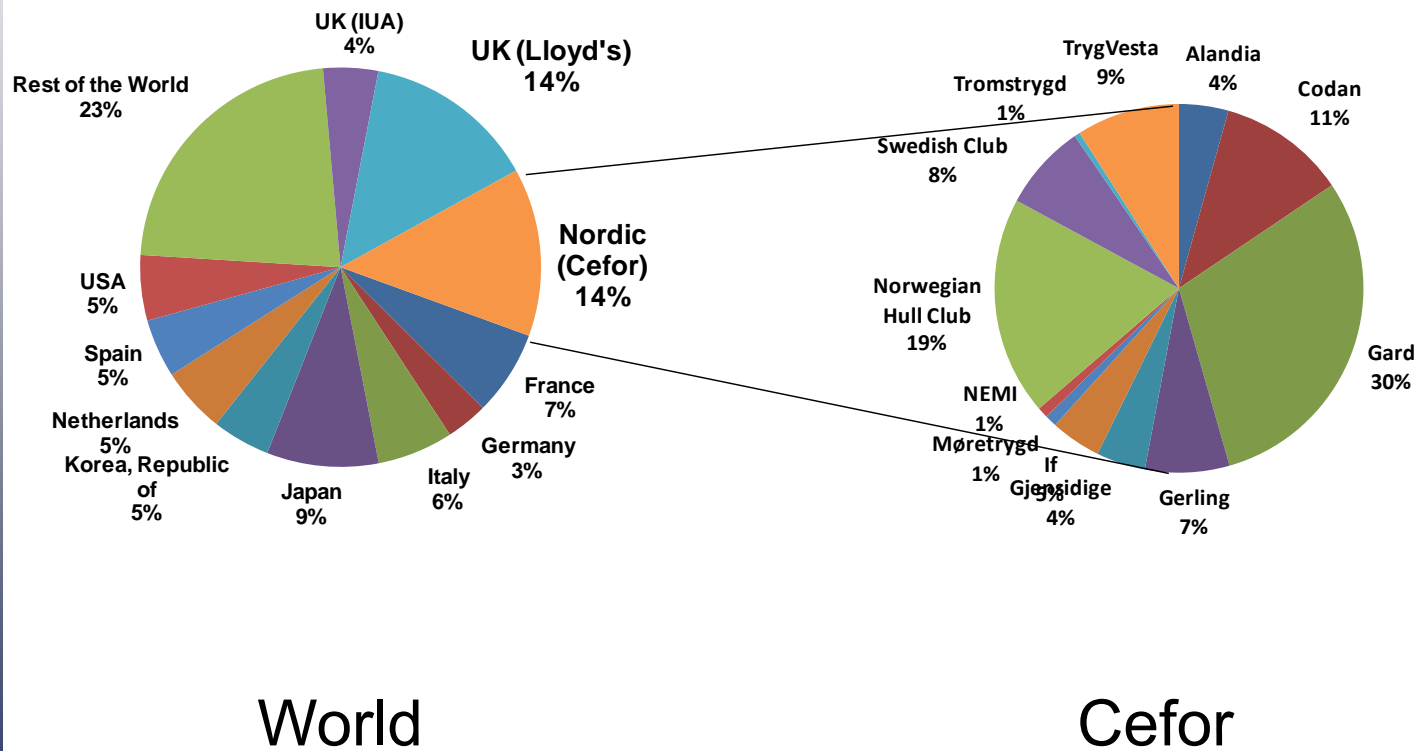
Types of vessels specified contd.

<u>Vessel Type group</u>	<u>Vessels included</u>	<u>Lloyds Conf. Index Code</u>
PASSENGER	All types of passenger vessels and ferries, Passenger/Roro, Highspeed Craft	LOF, LOP, MPR, OFY, OHF, OHS, PRR
SUPPL/OFF	Supply, Anchorhandling, Standby, Drilling Vessel, General Service Vessel, Supply (Tug, Anchor), Tug/Icebreaker	OBS, OBT, ODS, OIB, OIF, OIS, OIT, OLT, OMN, OMT, OOS, OPP, ORP, OSU, OSY, OSZ, OWO, XAA, XAF, XAG, XAH, XAT, XCT, XFF, XFS, XPT, XTG, XTI, XTP, XTR, XTS, XTT, XTX
TANK	Tanker, Sludge Vessel, Crude Oil Tanker, Asphalt Carriers, Bunkering Tanker, Naval Auxiliary	OSC, OTC, TAS, TBK, TCR, TNA, TTA



2010 Nordic Marine Insurance Statistics – Part 2

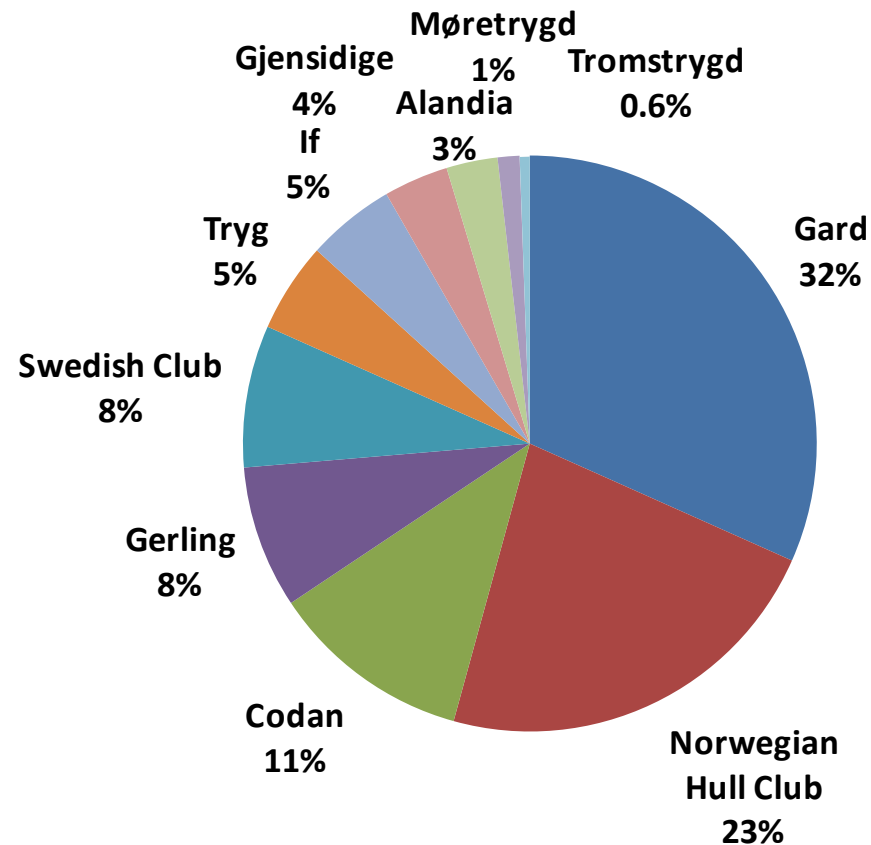
Distribution of Global Marine Hull Premium 2009





2010 Nordic Marine Insurance Statistics – Part 2

Distribution of Cefor Marine Hull Premium 2010



Note:

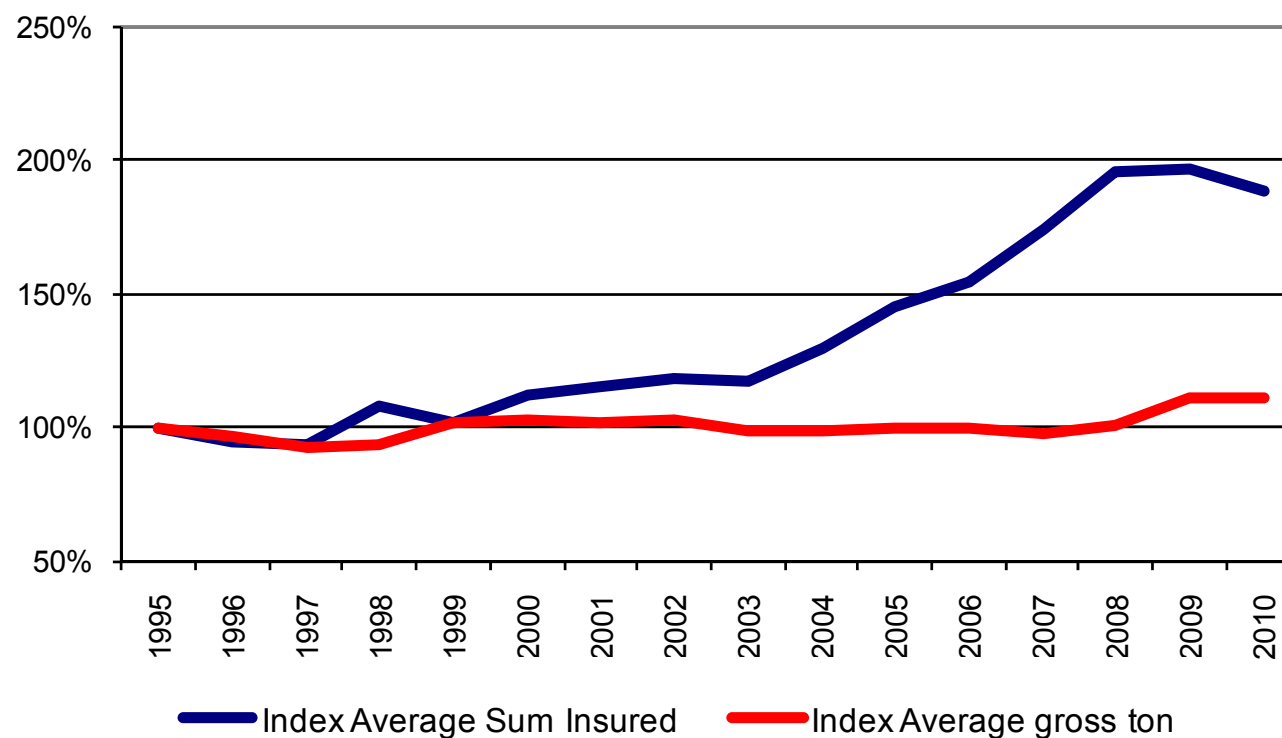
The premium overview on this slide INCLUDES Loss of hire, hull and freight interest and building risk in addition to hull. Whereas all following statistics are pure hull statistics and EXCLUDE Loss of hire, hull and freight interest and building risk !



2010 Nordic Marine Insurance Statistics – Part 3

As of 31 December 2010

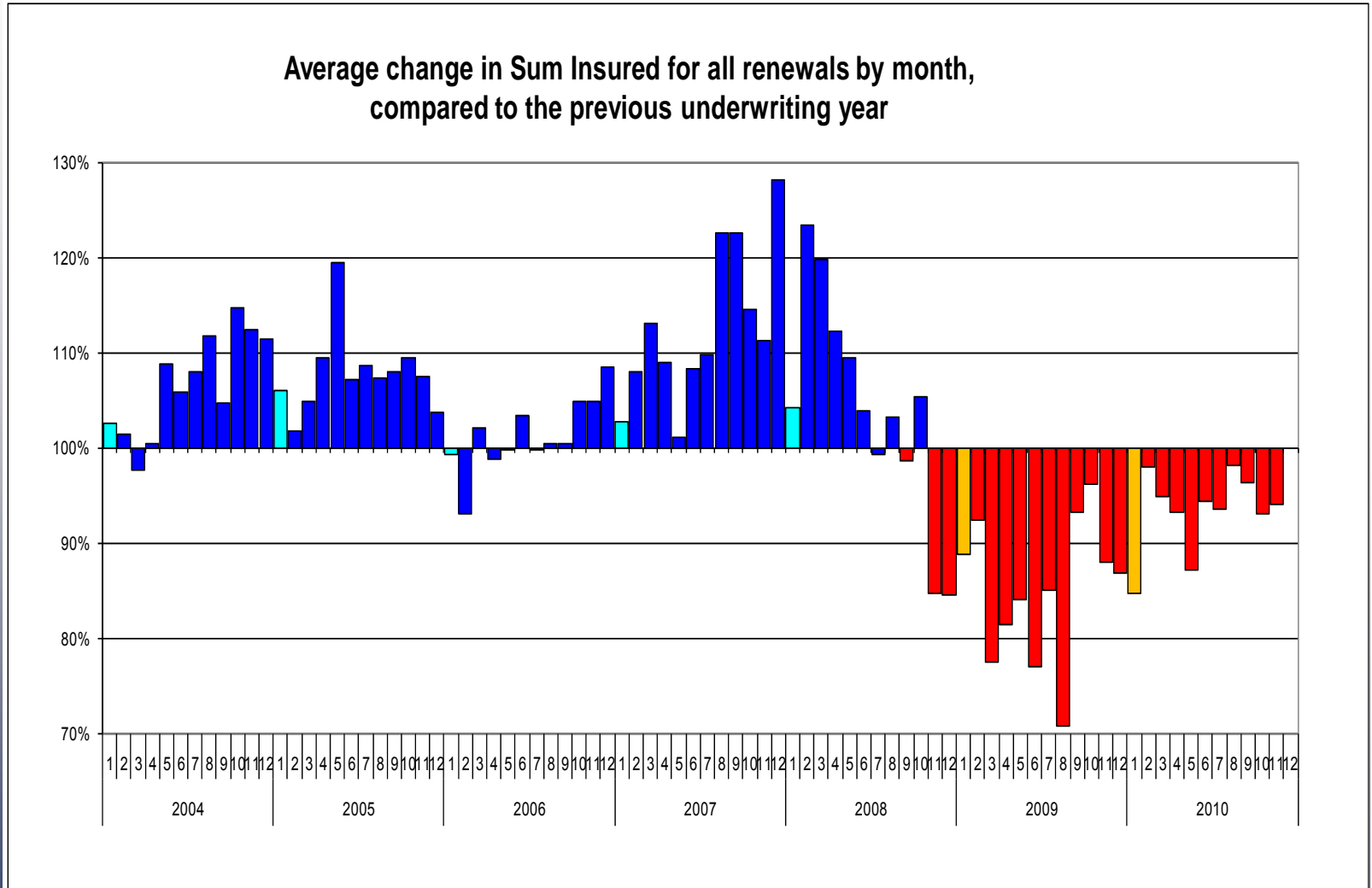
Index of evolution of average Sum insured and gross ton
1995=100%



Includes all insured vessels per underwriting year (renewed and new business).

2010 Nordic Marine Insurance Statistics – Part 3

As of 31 December 2010



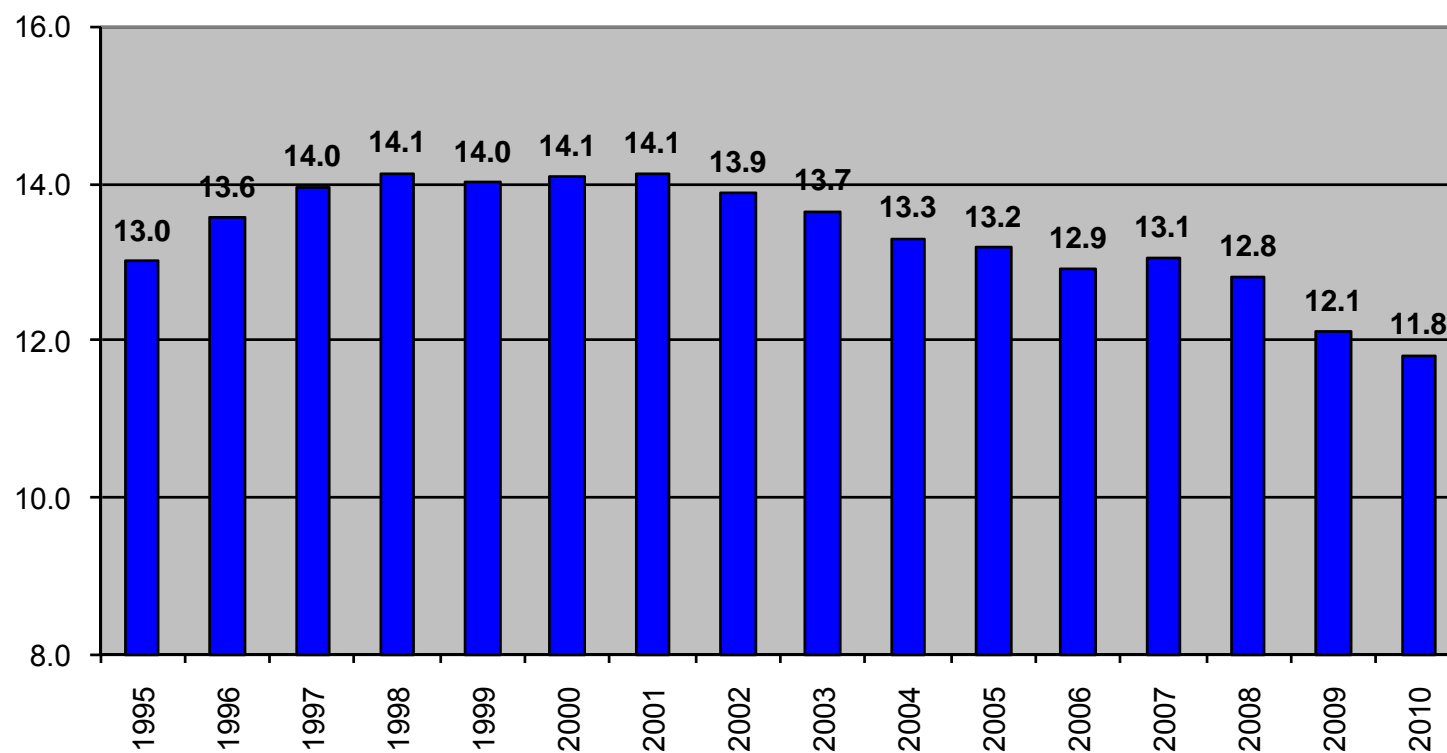
Based on renewals in respective month – excluding new business.



2010 Nordic Marine Insurance Statistics – Part 3

As of 31 December 2010

Average Age per underwriting year



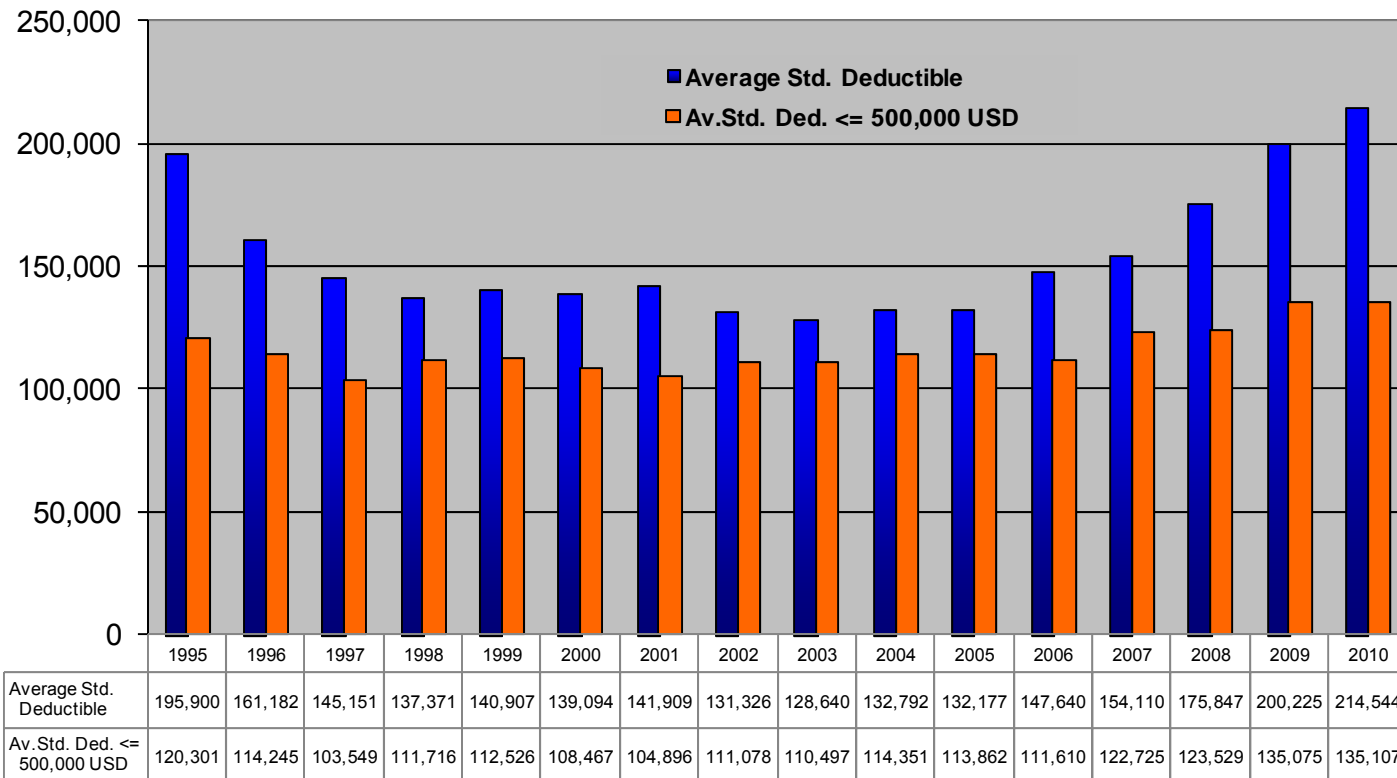


2010 Nordic Marine Insurance Statistics – Part 3

As of 31 December 2010

Average Standard Deductible Development

All business, **100%**, in USD

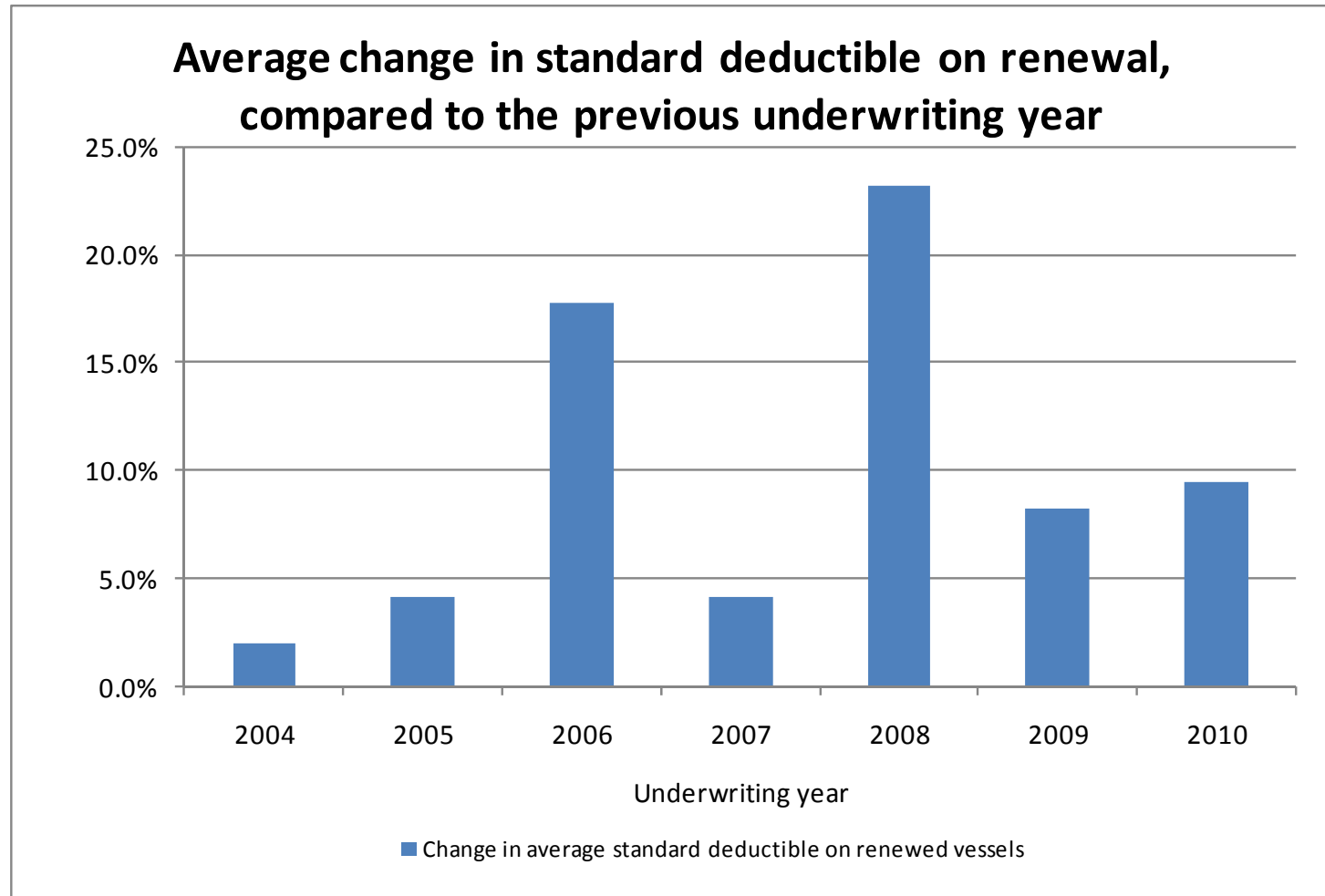


Includes all insured vessels per underwriting year (renewed and new business).



2010 Nordic Marine Insurance Statistics – Part 3

As of 31 December 2010



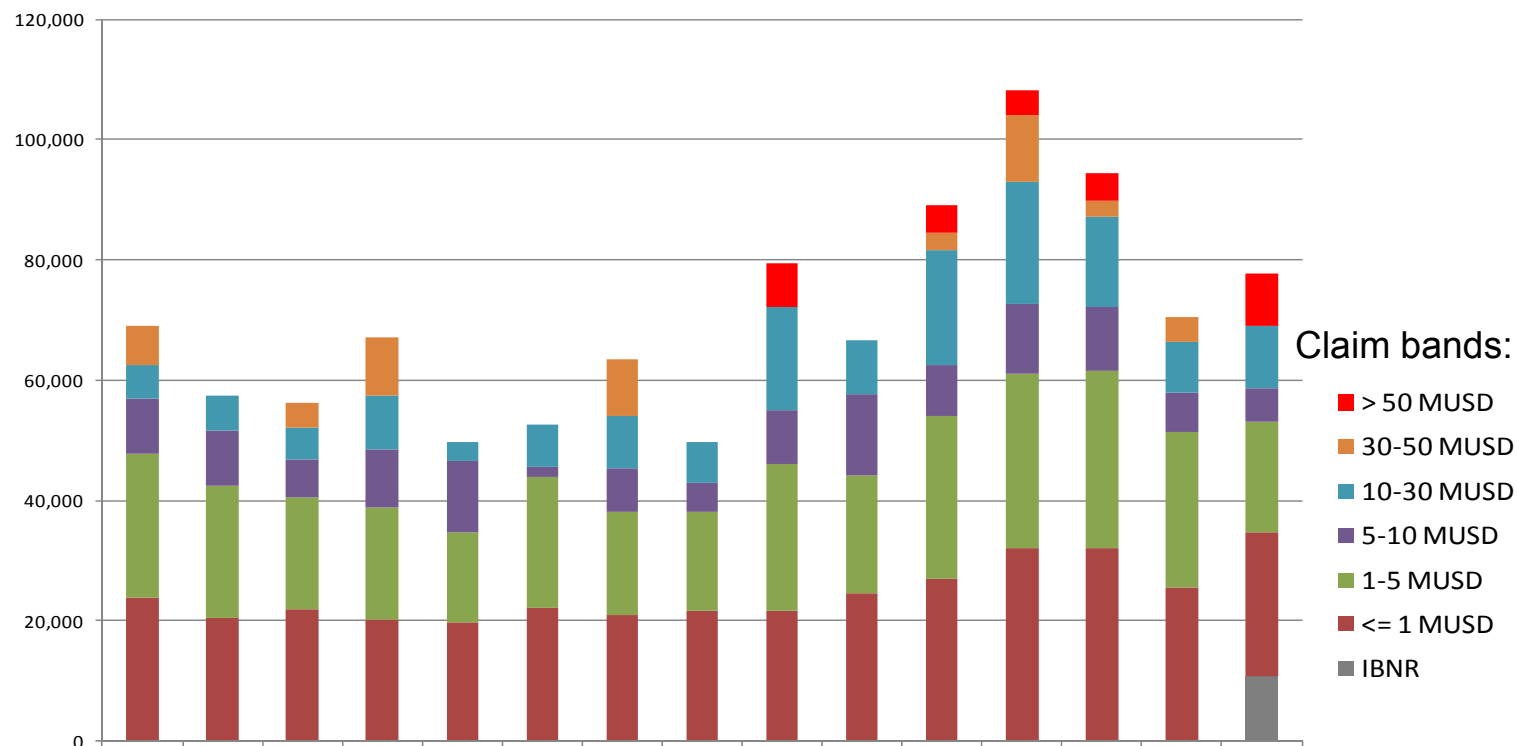
Based on renewals per year – excluding new business.



2010 Nordic Marine Insurance Statistics – Part 3

As of 31 December 2010 – paid+outstanding as reported + additional IBNR reserve

Claim per vessel (USD), by date of loss



	1996	1997	1998	1999	2000	2001	2002	2003	2004	2005	2006	2007	2008	2009	2010
> 50 MUSD	0	0	0	0	0	0	0	0	7,286	0	4,651	3,985	4,522	0	8,575
30-50 MUSD	6,298	0	4,055	9,712	0	0	9,517	0	0	0	2,870	11,304	2,611	4,047	0
10-30 MUSD	5,713	5,782	5,318	8,953	3,019	7,125	8,671	6,655	17,085	8,812	19,013	20,267	15,047	8,567	10,344
5-10 MUSD	9,123	9,178	6,411	9,755	11,865	1,716	7,277	4,796	9,009	13,529	8,551	11,454	10,762	6,558	5,557
1-5 MUSD	24,016	22,062	18,487	18,504	15,163	21,669	17,163	16,437	24,273	19,735	27,133	29,091	29,502	25,683	18,586
<= 1 MUSD	23,784	20,413	21,934	20,227	19,638	22,203	20,860	21,739	21,772	24,538	26,929	32,057	31,961	25,646	23,721
IBNR	0	0	0	0	0	0	0	0	0	0	0	0	0	0	10,905

Date of loss

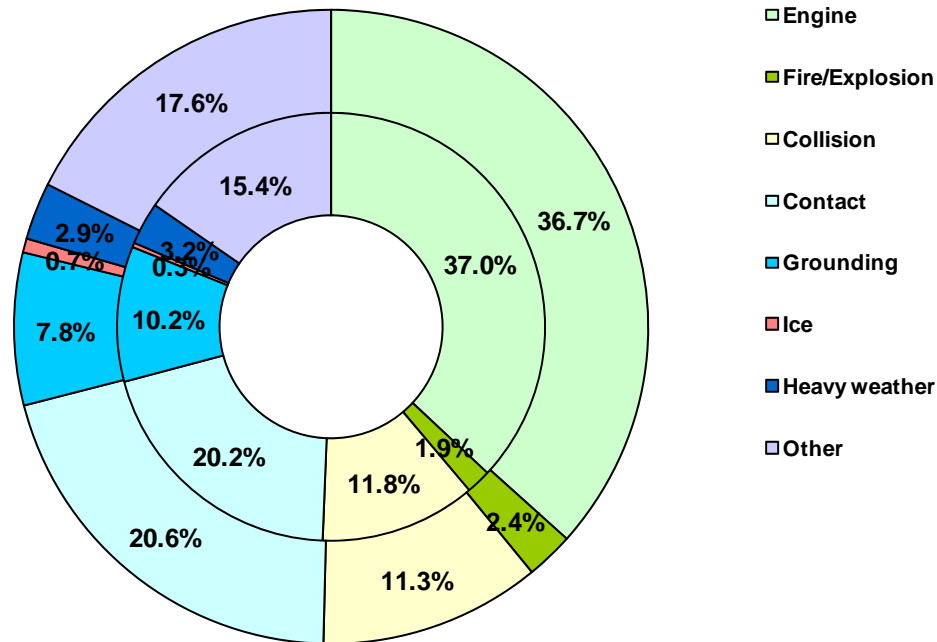
2010 Nordic Marine Insurance Statistics – Part 3

As of 31 December 2010 – paid+outstanding as reported, no IBNR reserve added

Claims by Claims type

Number of claims

Inner ring: 2005-2009
Outer ring: 2010



Totals	
2005-09:	16,631
2010:	1,814

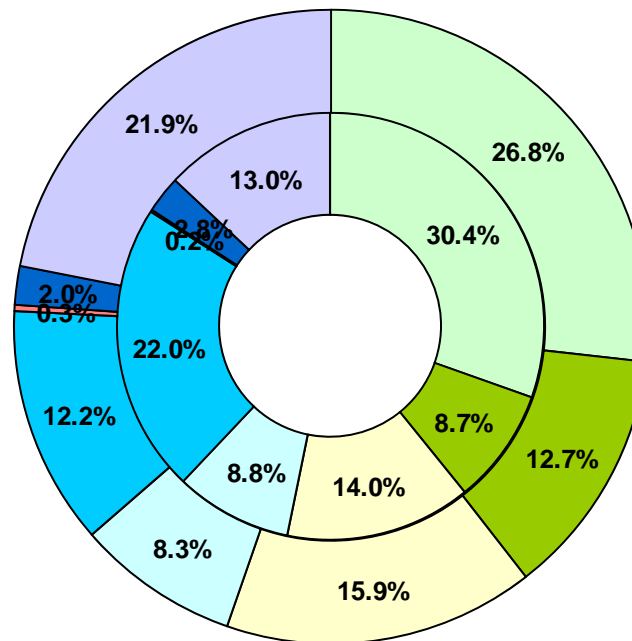
2010 Nordic Marine Insurance Statistics – Part 3

As of 31 December 2010 – paid+outstanding as reported, no IBNR reserve added

Claims by Claims type

Cost of claims

Inner ring: 2005-2009
Outer ring: 2010



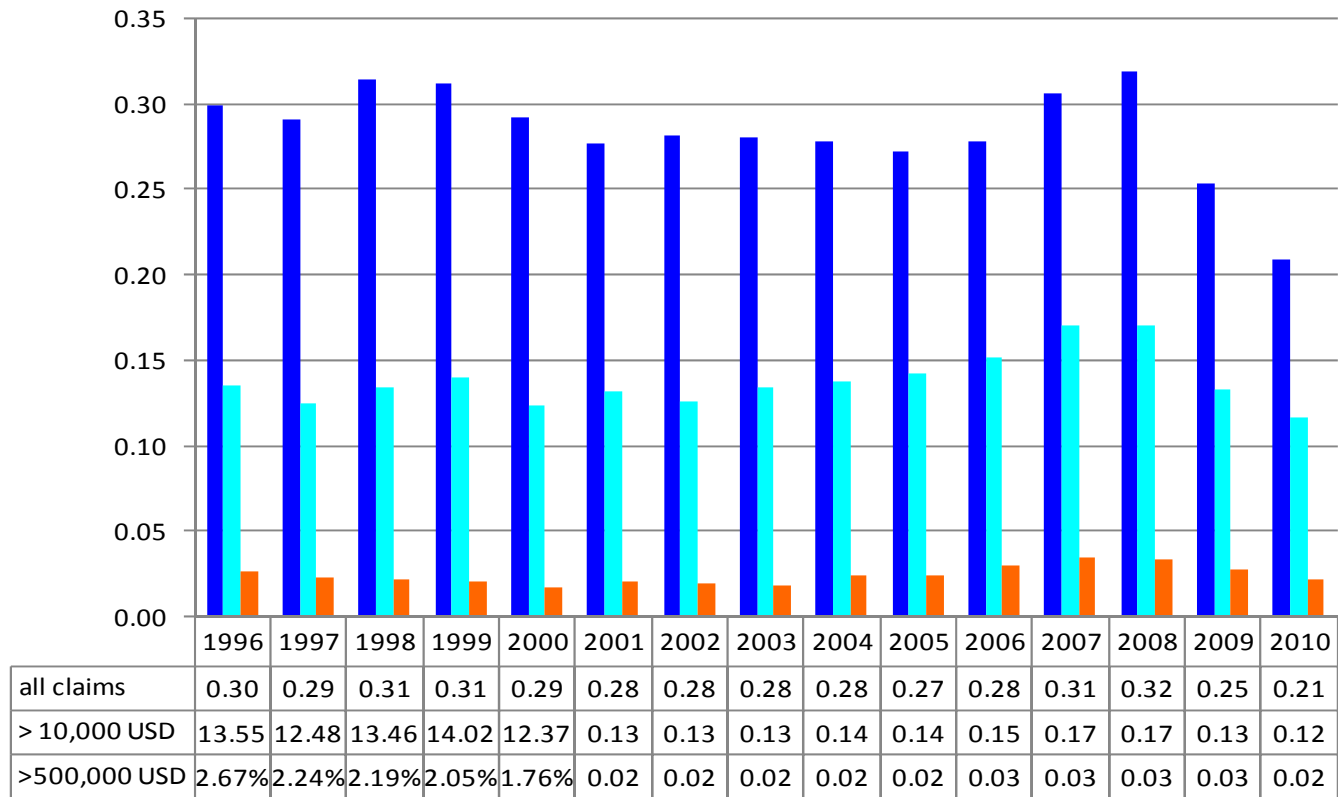
- Engine
- Fire/Explosion
- Collision
- Contact
- Grounding
- Ice
- Heavy weather
- Other

Totals
 2005-09: 5,041.5 MUSD
 2010: 579.6 MUSD

2010 Nordic Marine Insurance Statistics – Part 3

As of 31 December 2010 – paid+outstanding as reported, no IBNR reserve added

Claim frequency by date of loss



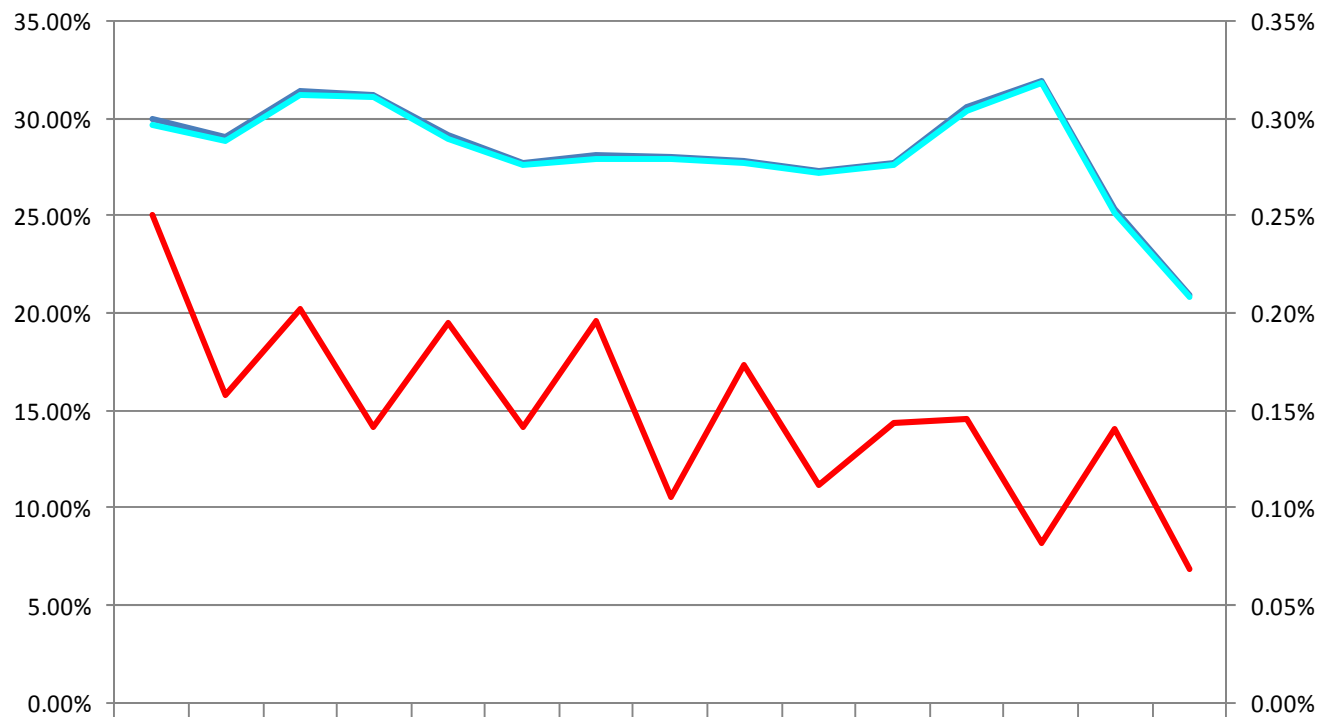
Comment: Claims < 10.000 USD account for about half of all claims. Registration of these may vary over time and in each company and will thus influence the registered frequency. In addition any increase/decrease of insurance deductibles will have impact on the registered frequency



2010 Nordic Marine Insurance Statistics – Part 3

As of 31 December 2010 – paid+outstanding as reported, no IBNR reserve added

Claim frequency by date of loss



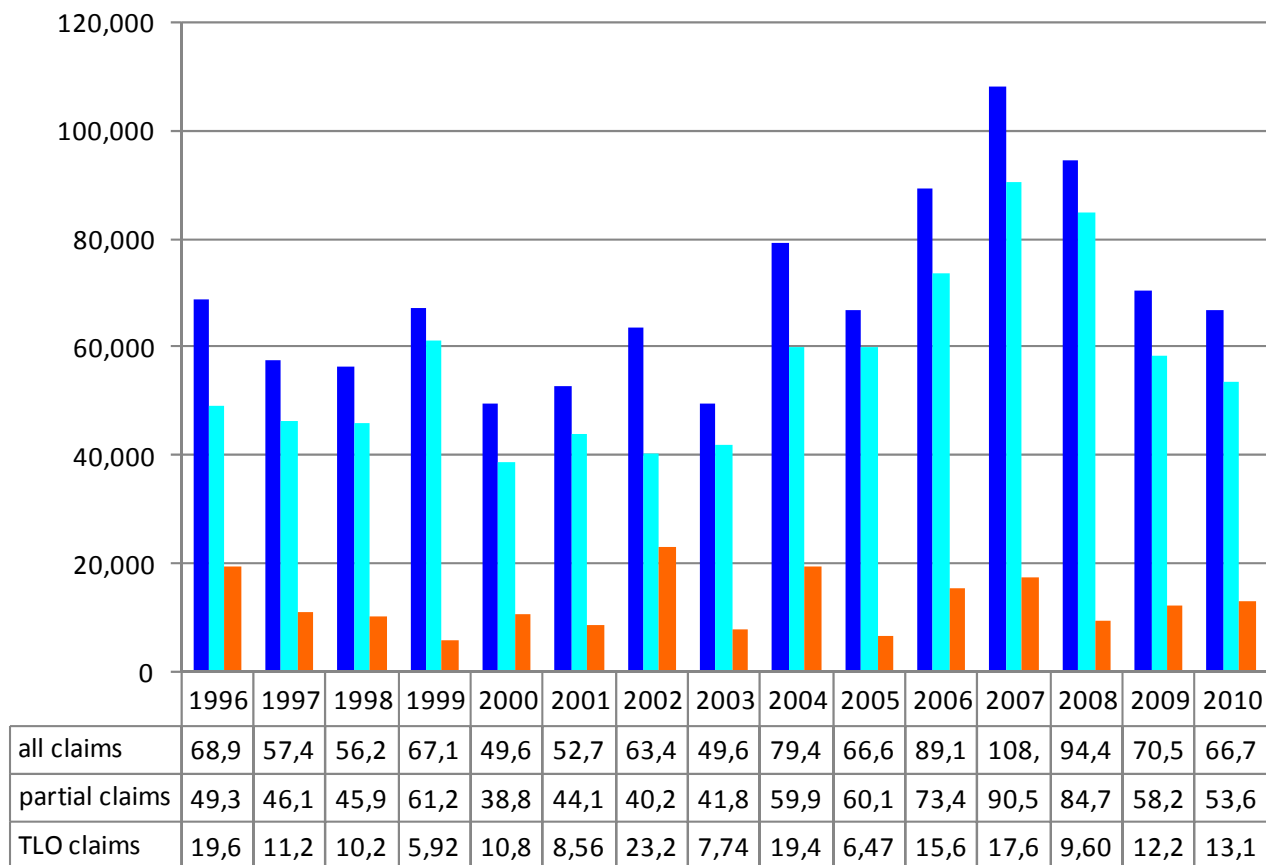
all claims (left axis)	0.30	0.29	0.31	0.31	0.29	0.28	0.28	0.28	0.28	0.27	0.28	0.31	0.32	0.25	0.21
partial claims (left axis)	29.7%	28.9%	31.2%	31.0%	28.9%	27.6%	27.9%	27.9%	27.7%	27.1%	27.6%	30.4%	31.9%	25.2%	20.8%
TLO claims (right axis)	0.25%	0.16%	0.20%	0.14%	0.19%	0.14%	0.20%	0.11%	0.17%	0.11%	0.14%	0.15%	0.08%	0.14%	0.07%



2010 Nordic Marine Insurance Statistics – Part 3

As of 31 December 2010 – paid+outstanding as reported, no IBNR reserve added

Claim per vessel by date of loss

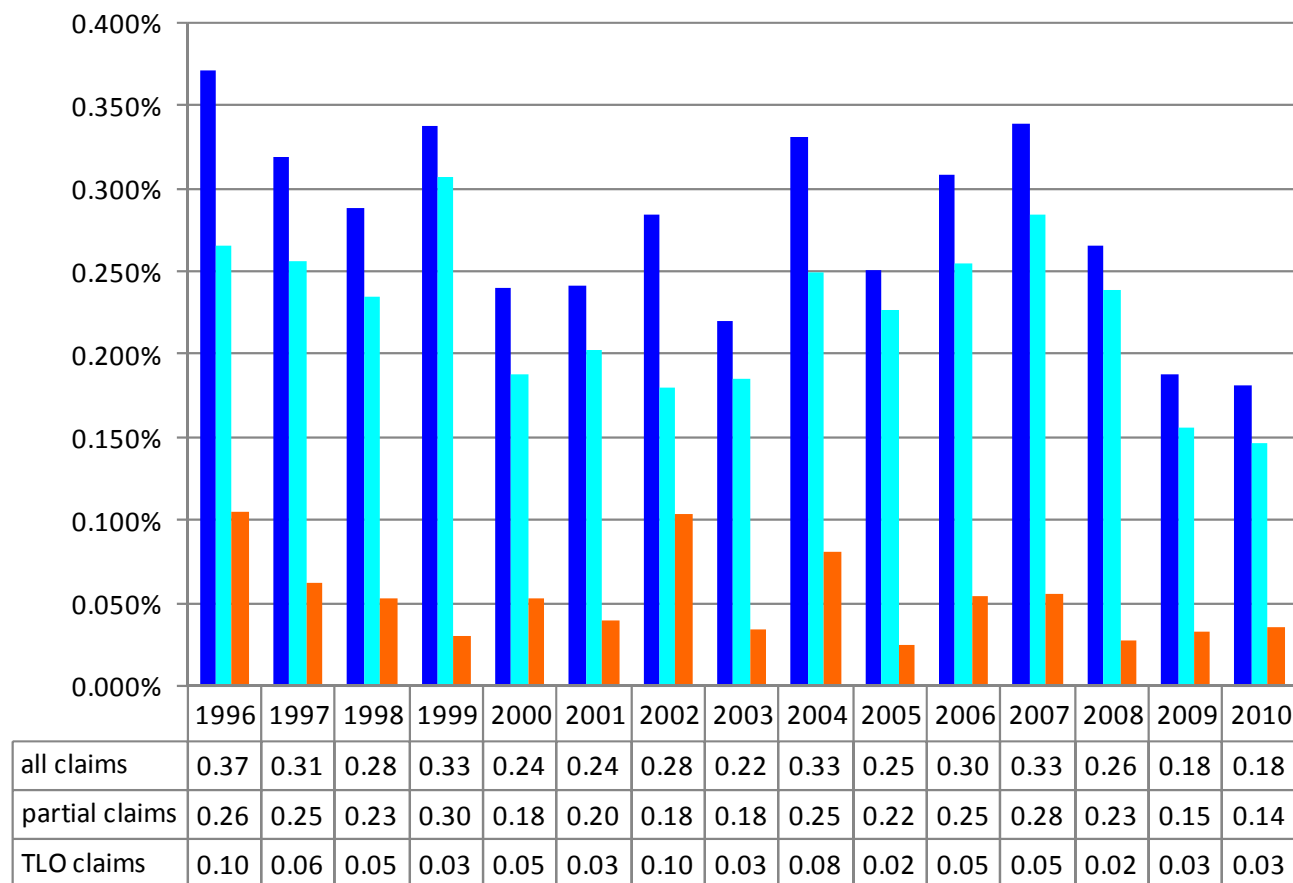




2010 Nordic Marine Insurance Statistics – Part 3

As of 31 December 2010 – paid+outstanding as reported, no IBNR added

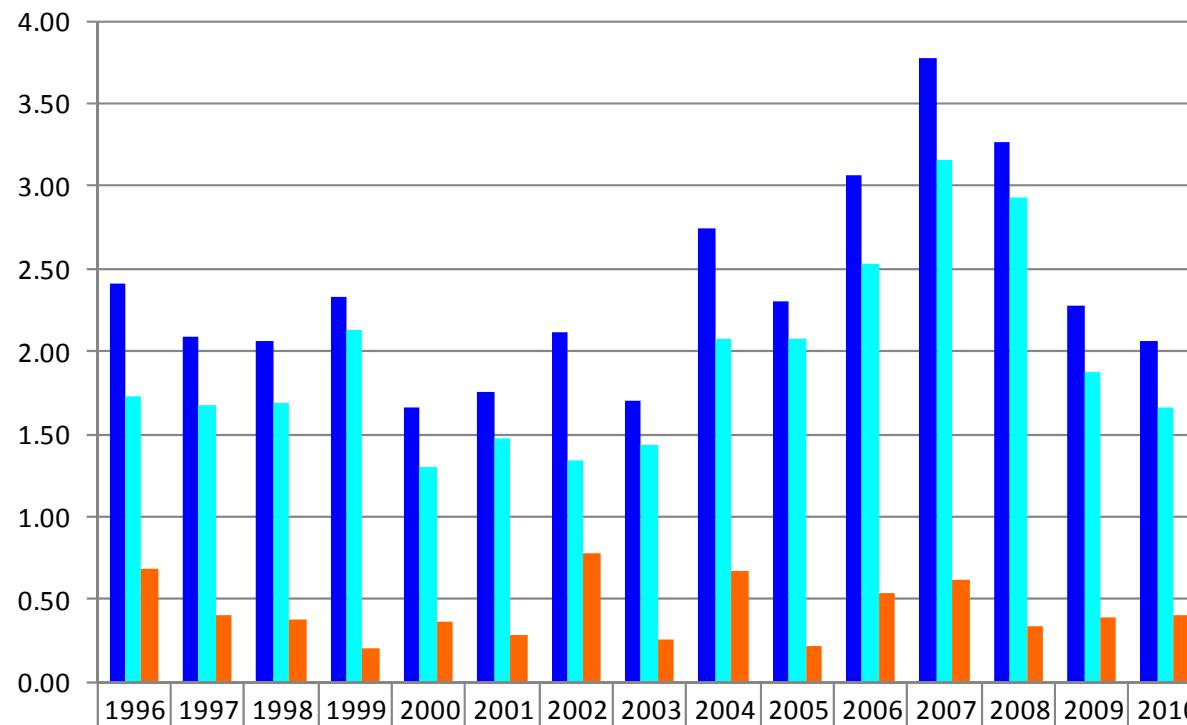
Claim per Sum Insured by date of loss



2010 Nordic Marine Insurance Statistics – Part 3

As of 31 December 2010 – paid+outstanding as reported, no IBNR added

Claim per gross ton by date of loss



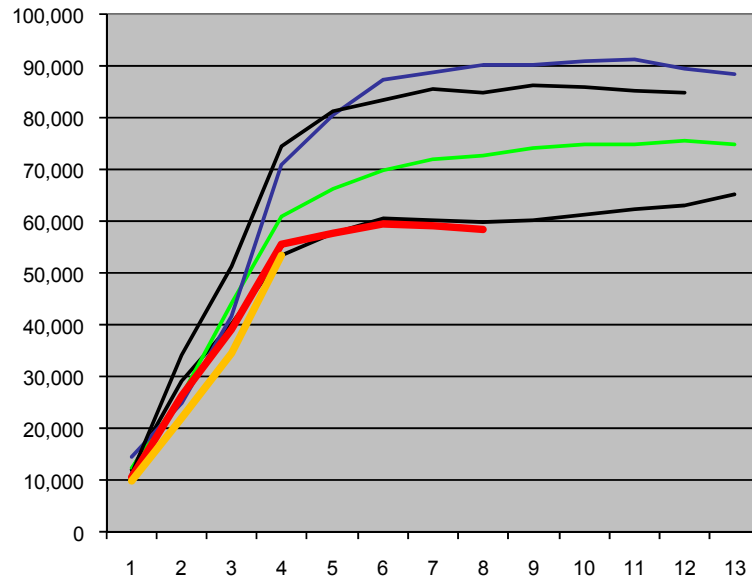
all claims	2.41	2.08	2.06	2.33	1.66	1.76	2.12	1.69	2.75	2.30	3.07	3.77	3.26	2.27	2.06
partial claims	1.72	1.68	1.68	2.13	1.29	1.47	1.34	1.43	2.08	2.08	2.53	3.15	2.93	1.88	1.66
TLO claims	0.68	0.41	0.38	0.21	0.36	0.29	0.78	0.26	0.67	0.22	0.54	0.62	0.33	0.39	0.41



2010 Nordic Marine Insurance Statistics – Part 3

As of 31 December 2010 – paid+outstanding as reported

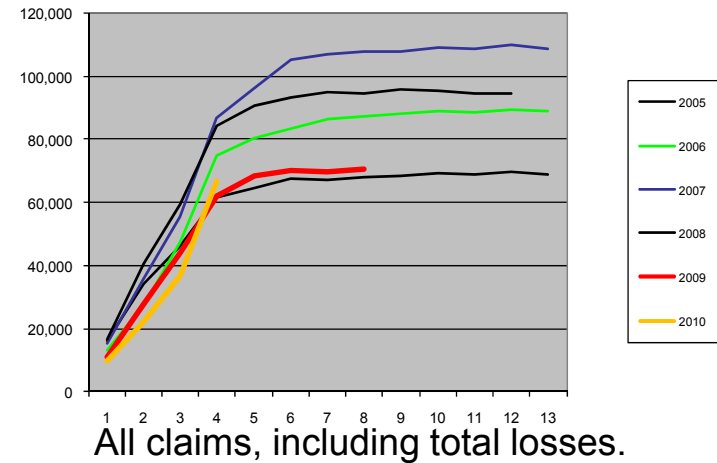
**Marine Hull Claim per vessel-
accumulated quarterly development**



Partial claims – excluding total losses.

Claims by date of loss (claims occurred in respective year)

**Marine Hull Claim per vessel-
accumulated quarterly development**

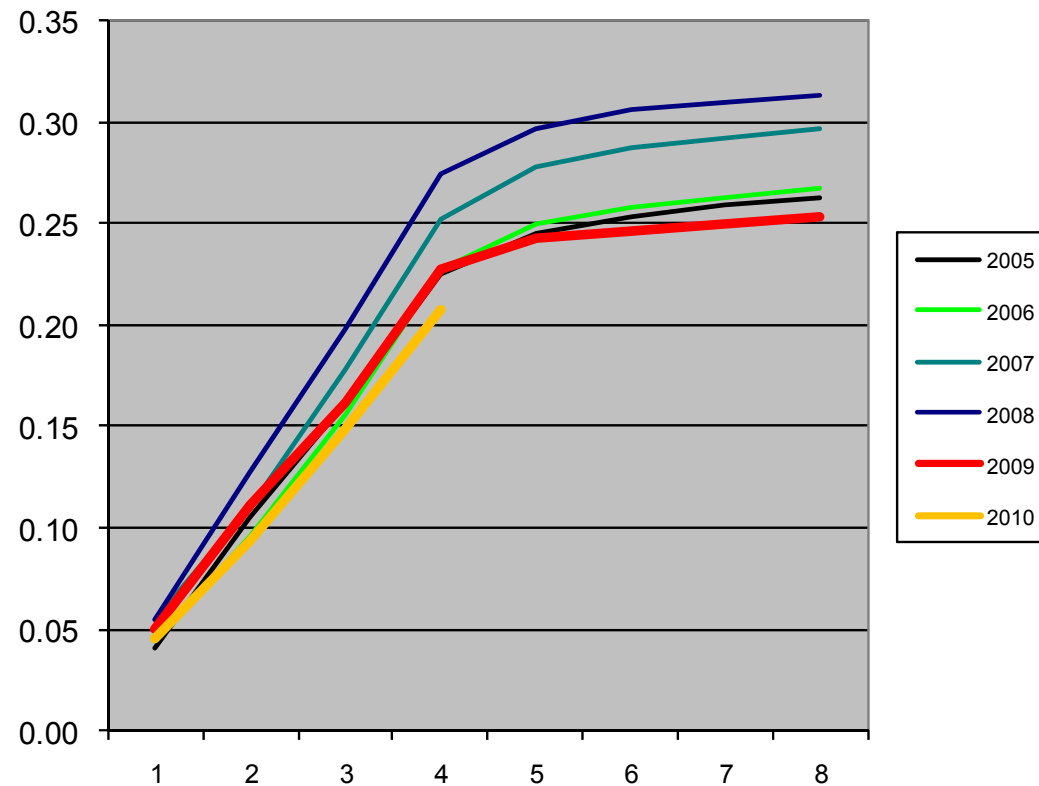


All claims, including total losses.

2010 Nordic Marine Insurance Statistics – Part 3

As of 31 December 2010 – paid+outstanding as reported

**Marine Hull - Claim frequency
quarterly development**



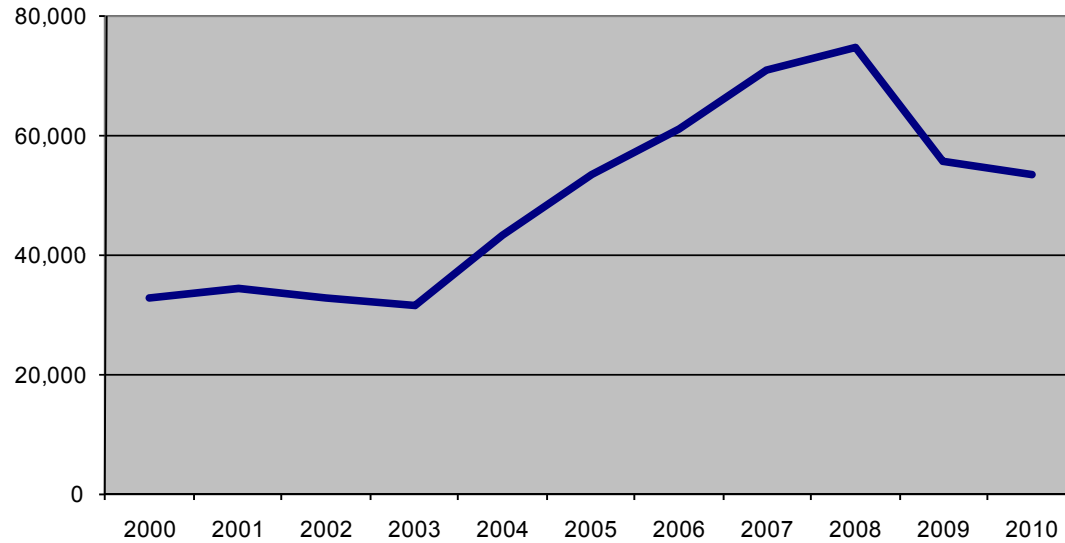
All claims. Claims by date of loss (claims occurred in respective year)



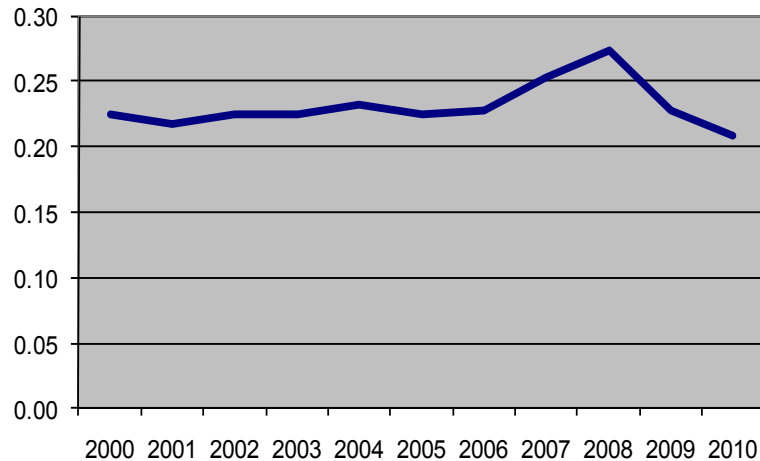
2010 Nordic Marine Insurance Statistics – Part 3

As of 31 December 2010 – paid+outstanding as reported

Claim per vessel - as reported
as of 4th quarter of each year



Claim frequency - as reported
as of 4th quarter of each year



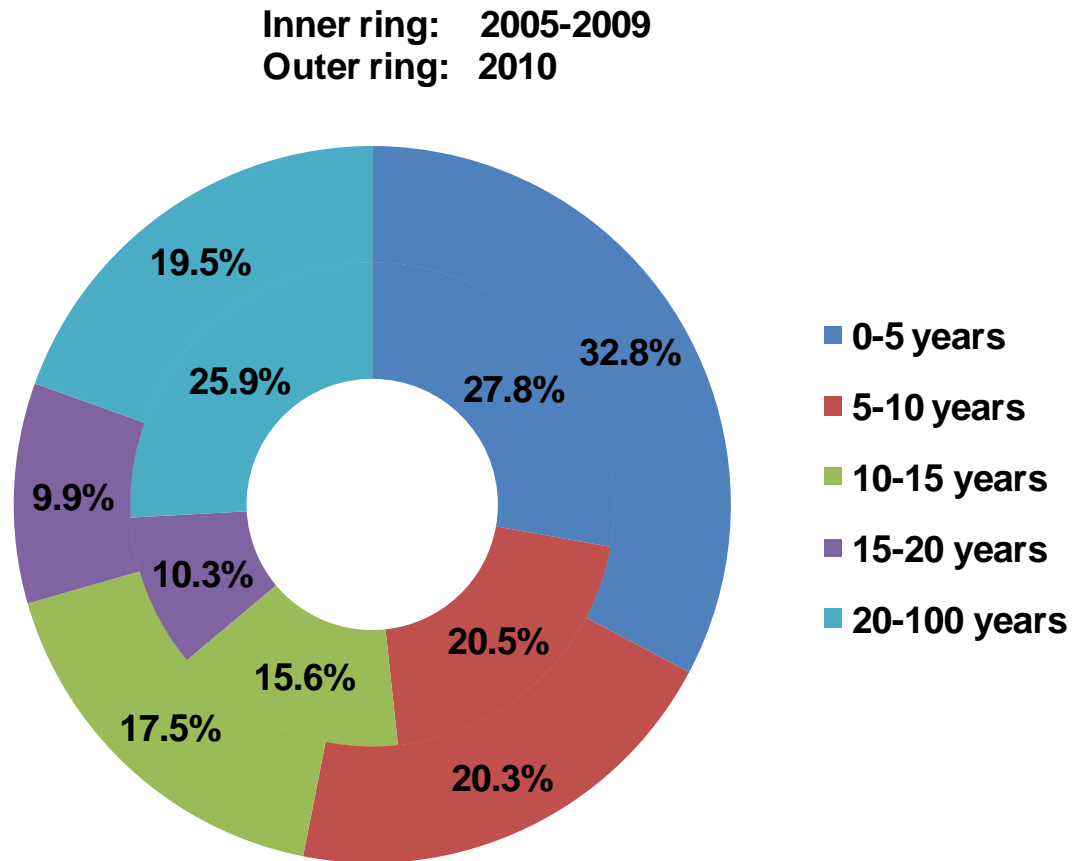
Partial claims – excluding total losses.

Claims by date of loss.
(claims occurred in respective year)

2010 Nordic Marine Insurance Statistics – Part 4

As of 31 December 2010

Number of vessels per age group, by year of exposure



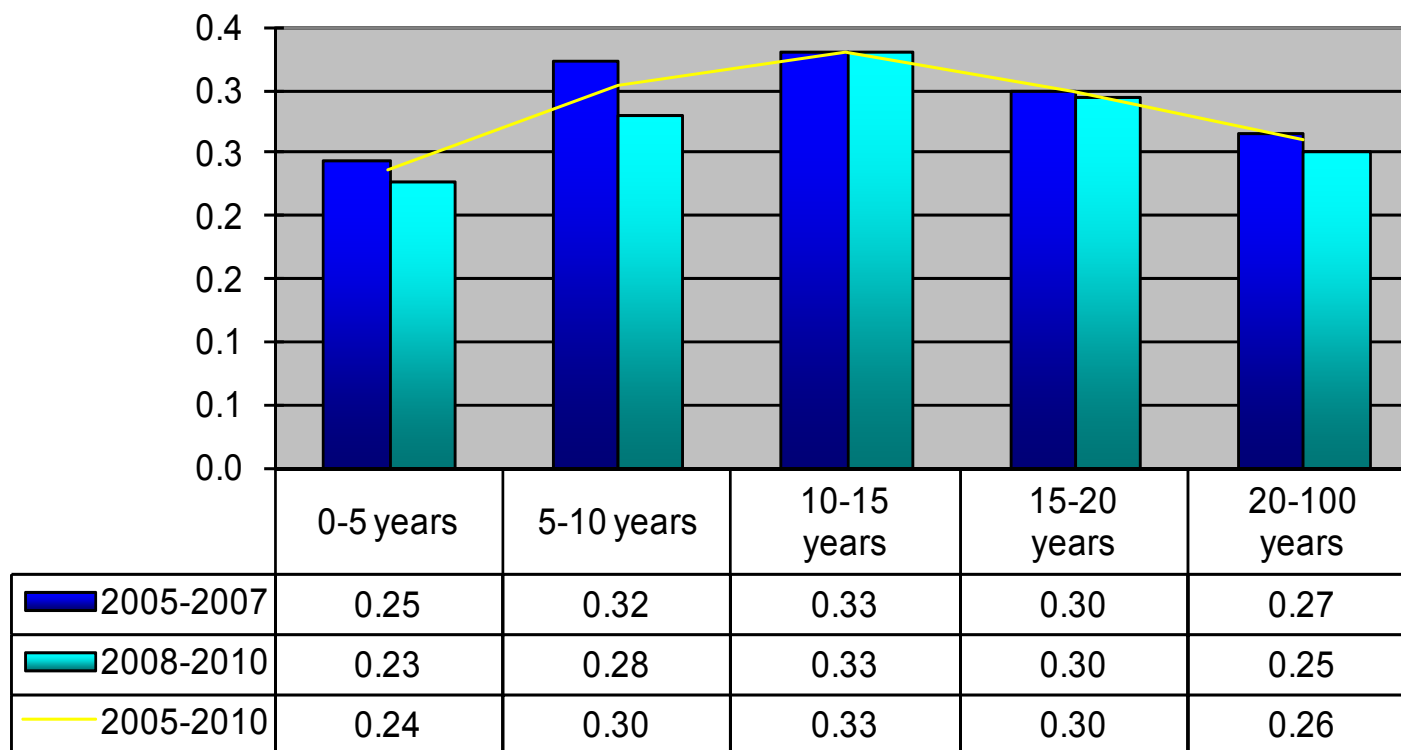
Total number of vessels
 2005-09: 57,833
 2010: 8,679



2010 Nordic Marine Insurance Statistics – Part 4

As of 31 December 2010 – paid+outstanding as reported, no IBNR reserve added

Claim frequency per age group



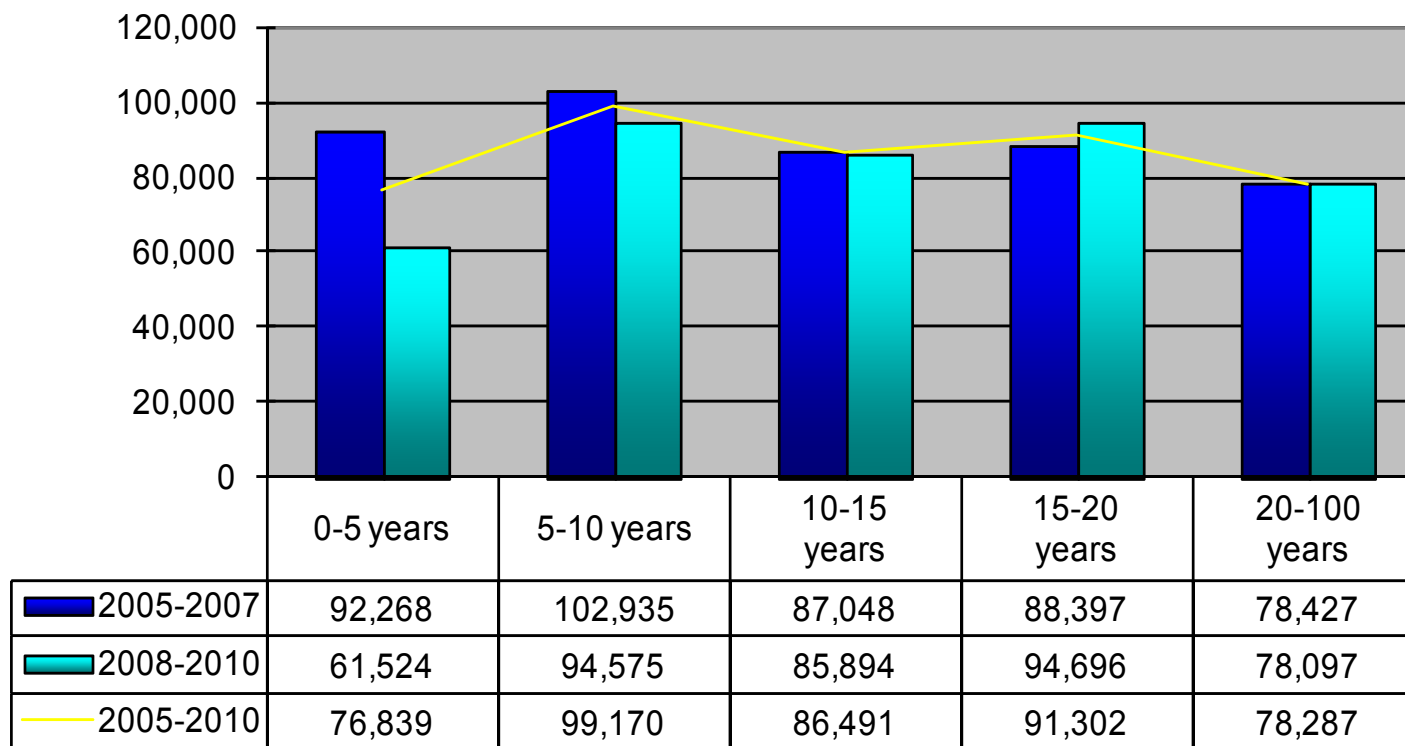
Comment: Claims < 10.000 USD account for about half of all claims. Registration of these may vary over time and in each company and will thus influence the registered frequency. In addition any increase/decrease of insurance deductibles will have impact on the registered frequency



2010 Nordic Marine Insurance Statistics – Part 4

As of 31 December 2010 – paid+outstanding as reported, no IBNR reserve added

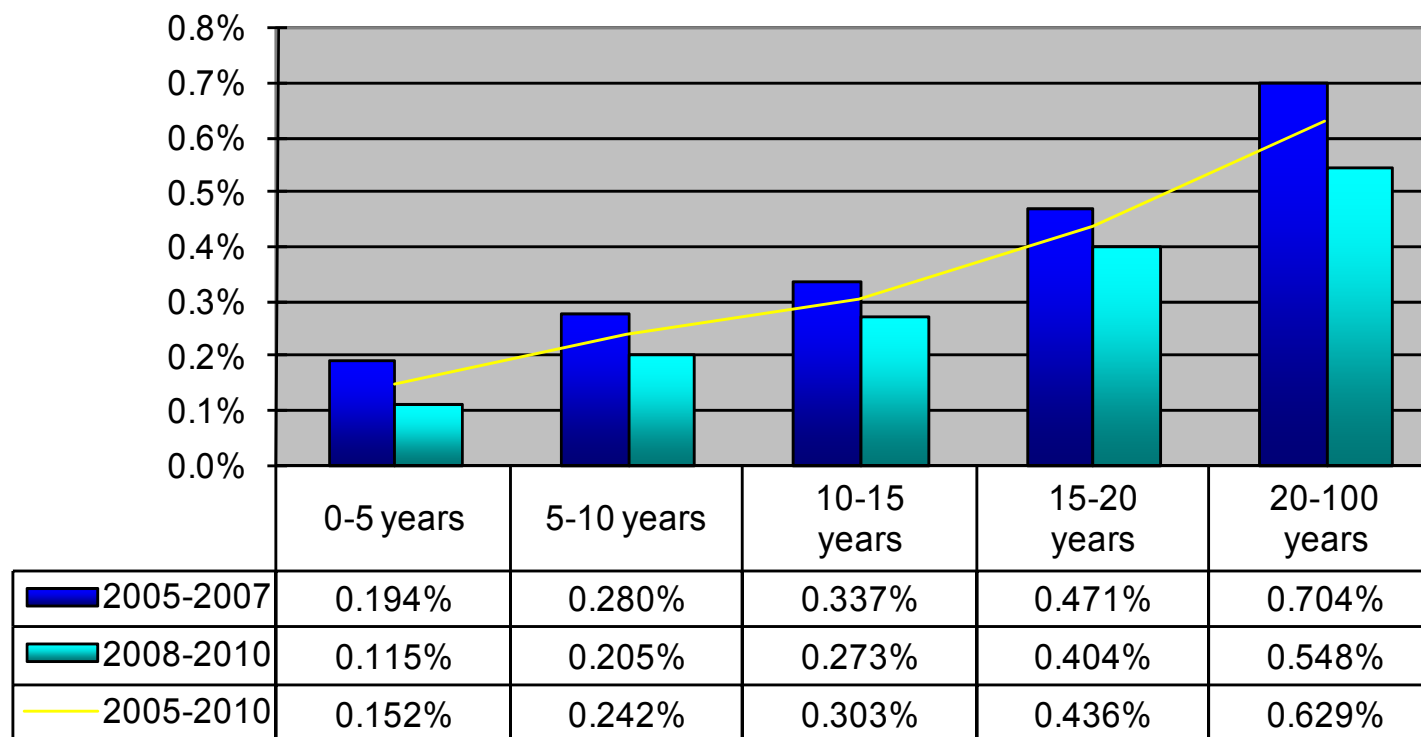
Claim per vessel per age group
in USD



2010 Nordic Marine Insurance Statistics – Part 4

As of 31 December 2010 – paid+outstanding as reported, no IBNR reserve added

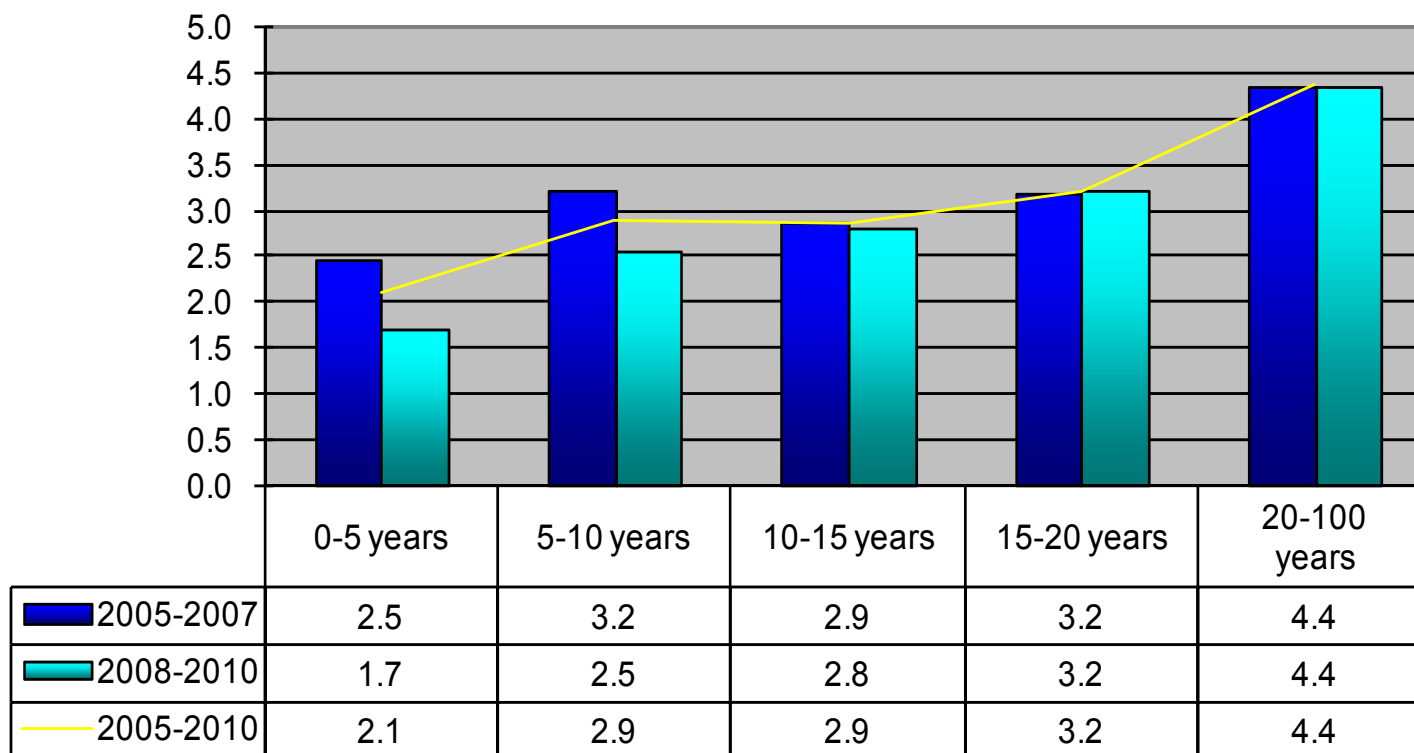
Claim per Sum Insured per age group



2010 Nordic Marine Insurance Statistics – Part 1

As of 31 December 2010 – paid+outstanding as reported, no IBNR reserve added

Claim per gross ton per age group
in USD

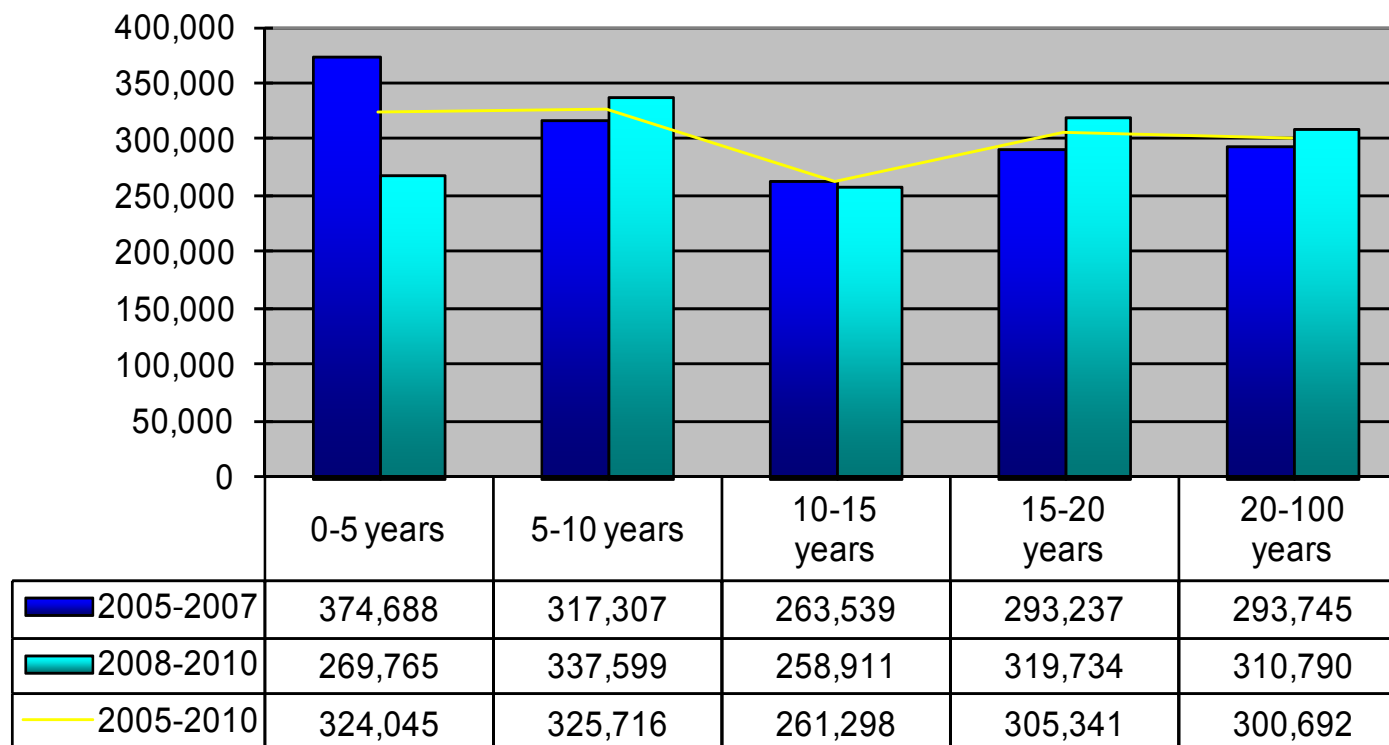




2010 Nordic Marine Insurance Statistics – Part 1

As of 31 December 2010 – paid+outstanding as reported, no IBNR reserve added

Average claim amount per age group
in USD

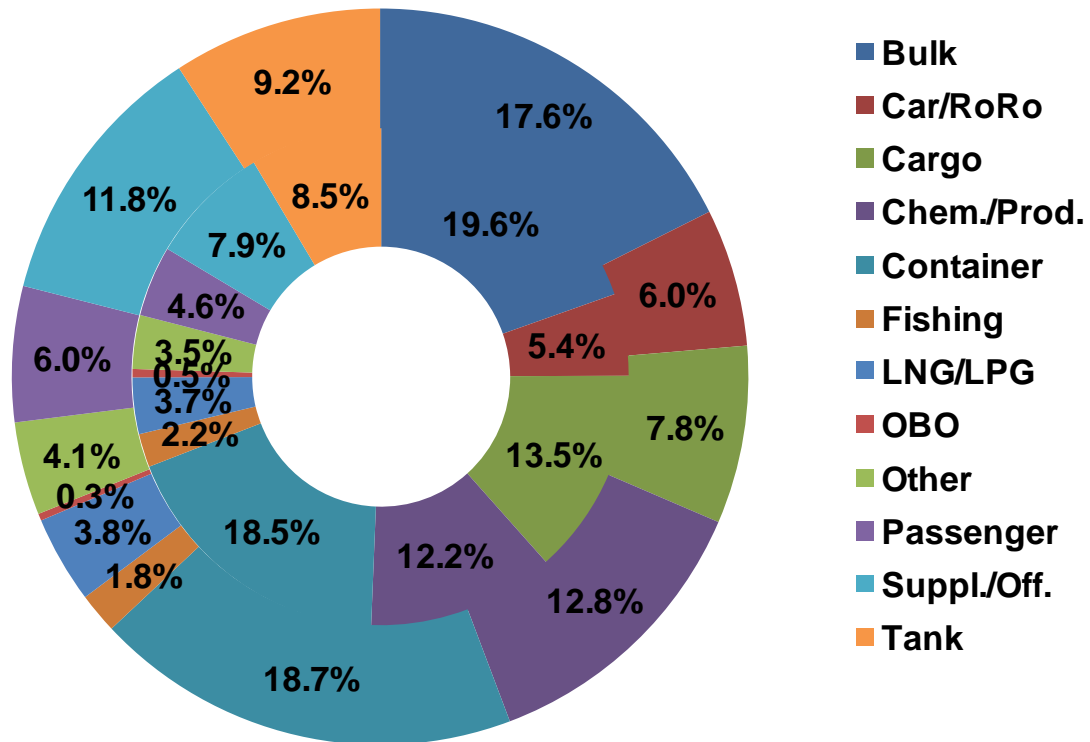


2010 Nordic Marine Insurance Statistics – Part 5

As of 31 December 2010

Number of vessels per vessel type, by year of exposure

Inner ring: 2005-2009
Outer ring: 2010

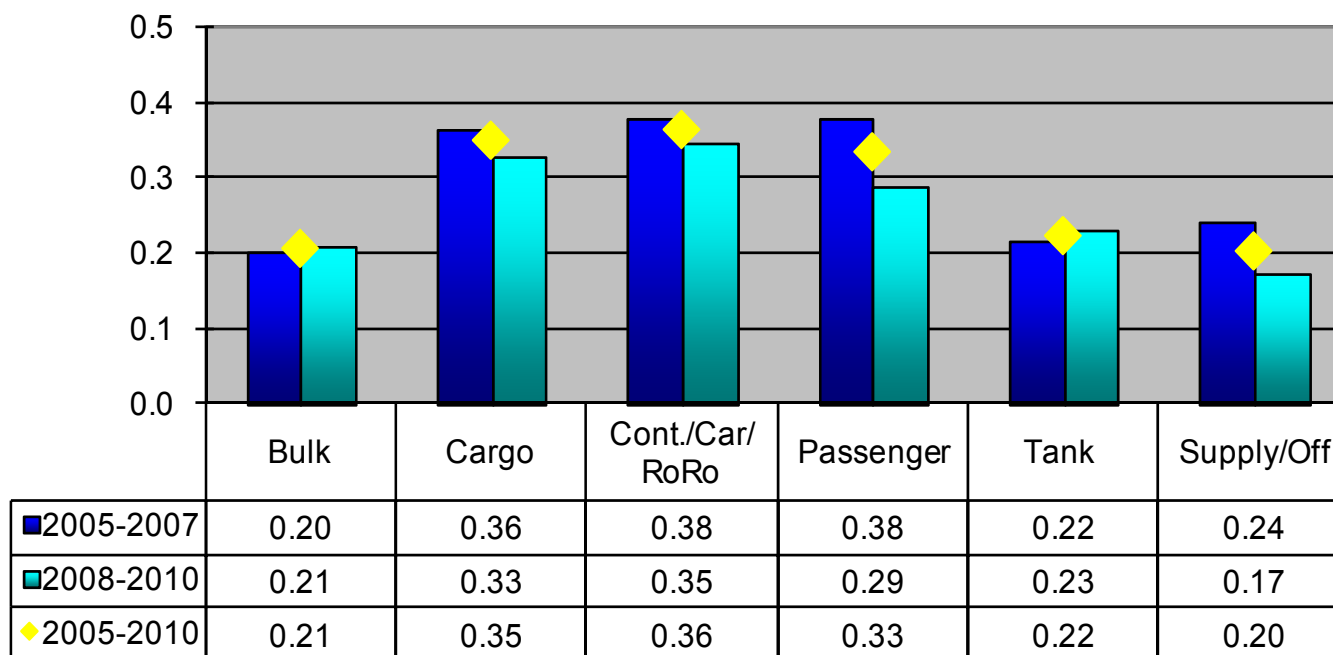


Total number of vessels
2005-09: 57,833
2010: 8,679

2010 Nordic Marine Insurance Statistics – Part 5

As of 31 December 2010 – paid+outstanding as reported, no IBNR reserve added

Claim frequency per vessel type group



NOTES:

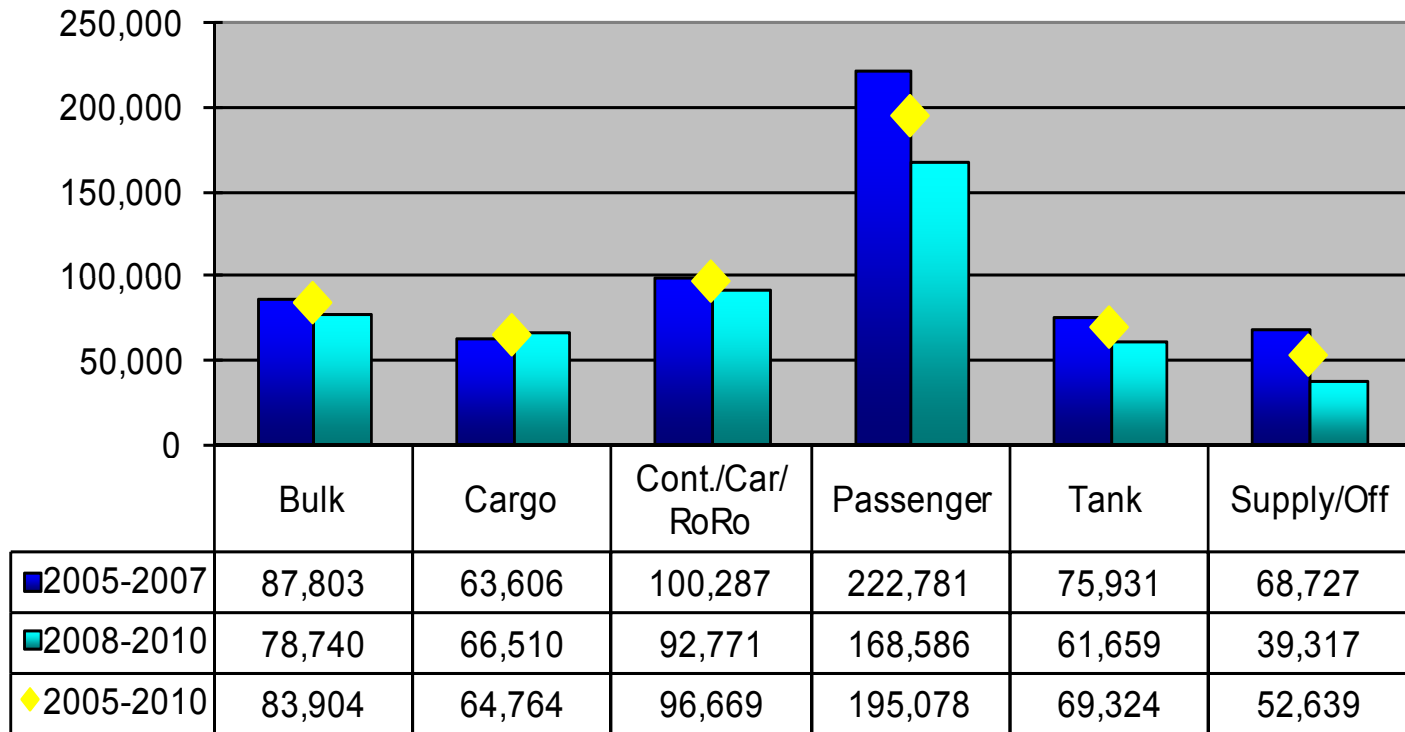
- "Tank" includes in this and the following slides: Chemical/Product, LNG/LPG, OBO and other tank vessels
- Claims < 10.000 USD account for about half of all claims. Registration of these may vary over time and in each company and will thus influence the registered frequency.
In addition any increase/decrease of insurance deductibles has impact on the registered frequency



2010 Nordic Marine Insurance Statistics – Part 5

As of 31 December 2010 – paid+outstanding as reported, no IBNR reserve added

Claim per vessel per vessel type group

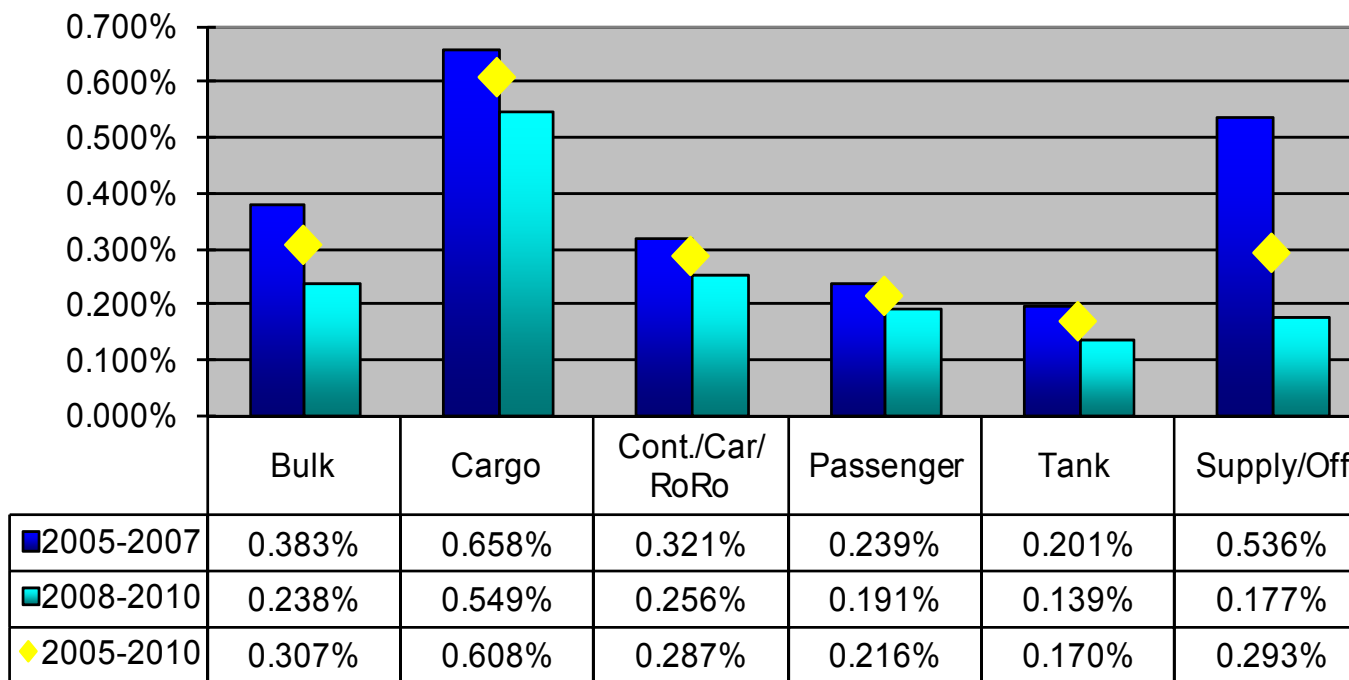




2010 Nordic Marine Insurance Statistics – Part 5

As of 31 December 2010 – paid+outstanding as reported, no IBNR reserve added

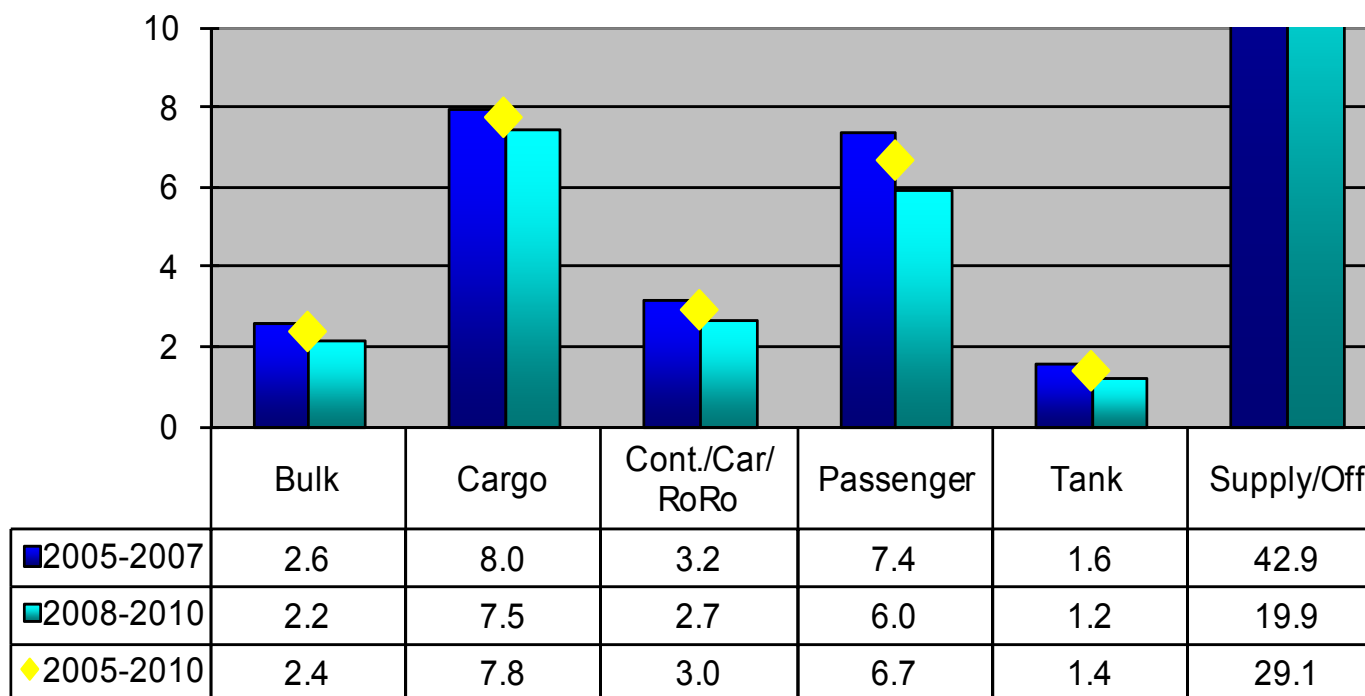
Claim per Sum Insured per vessel type group



2010 Nordic Marine Insurance Statistics – Part 5

As of 31 December 2010 – paid+outstanding as reported, no IBNR reserve added

Claim per gross ton per vessel type group

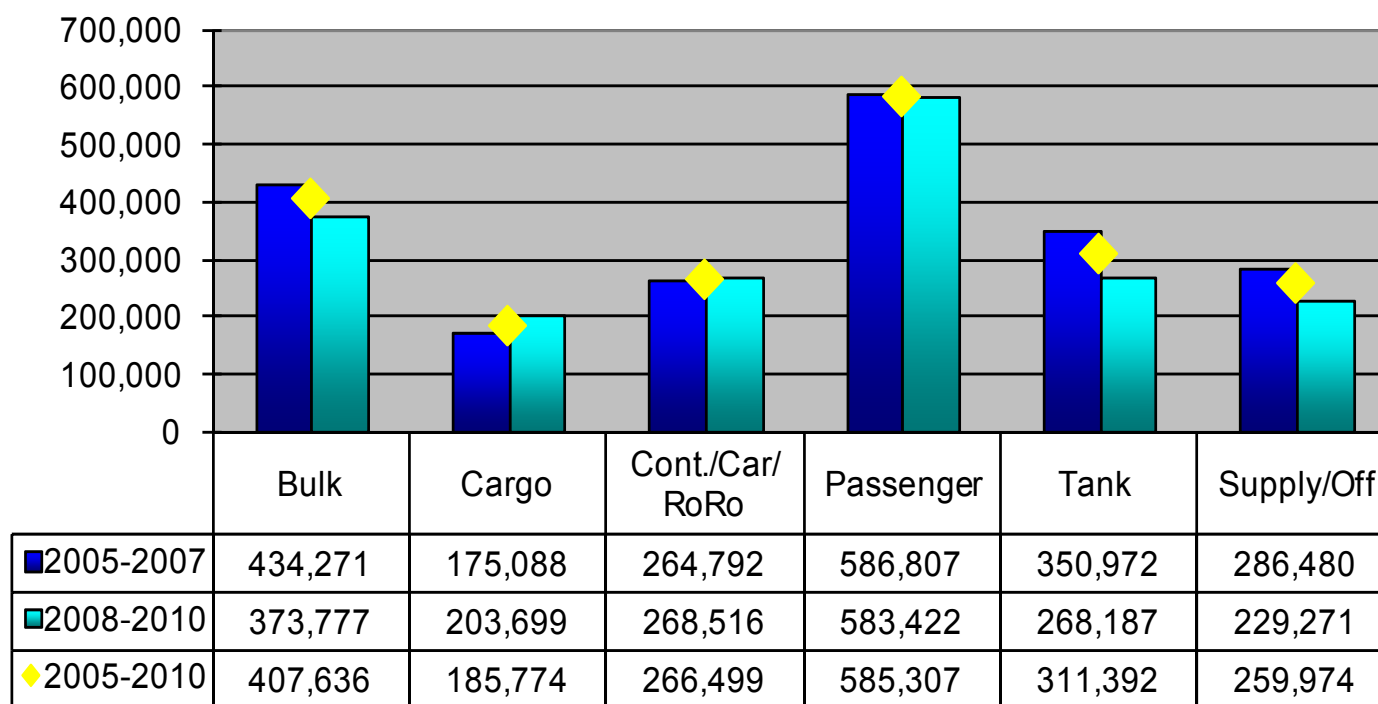




2010 Nordic Marine Insurance Statistics – Part 5

As of 31 December 2010 – paid+outstanding as reported, no IBNR reserve added

Average claim amount per vessel type group



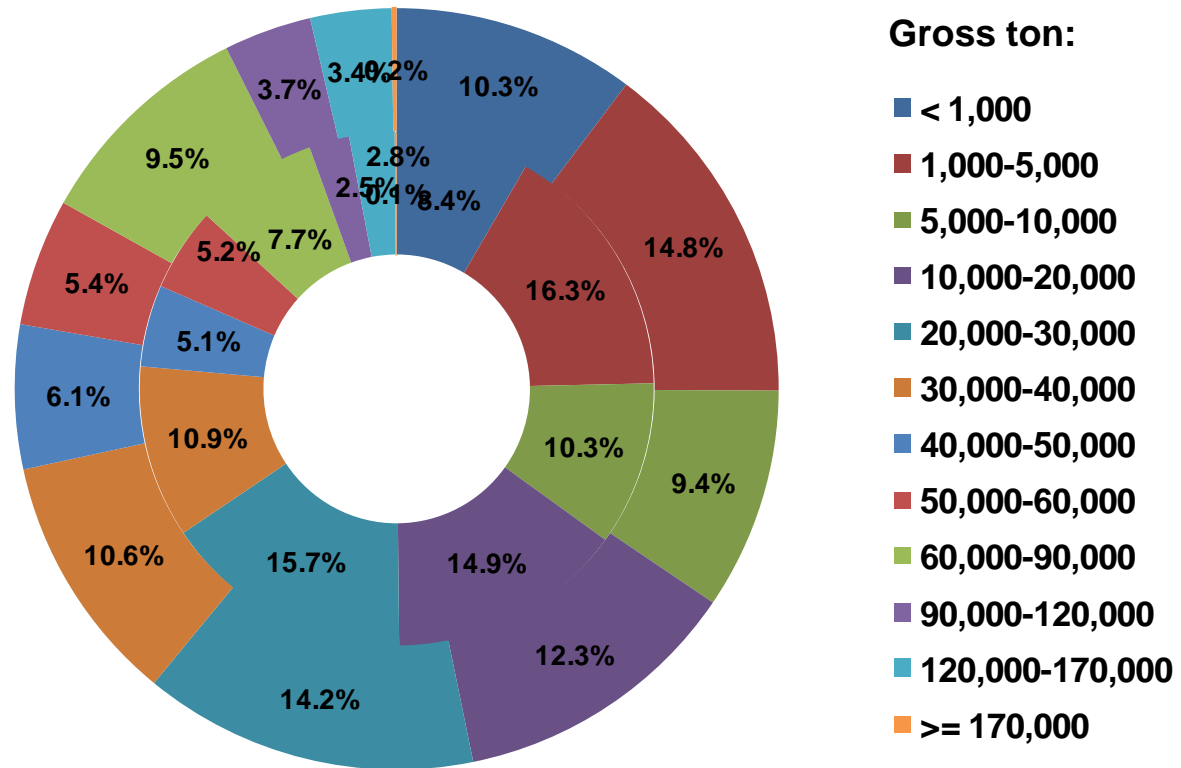


2010 Nordic Marine Insurance Statistics – Part 6

As of 31 December 2010

Number of vessels per GT Size Group, by year of exposure

Inner ring: 2005-2009
Outer ring: 2010



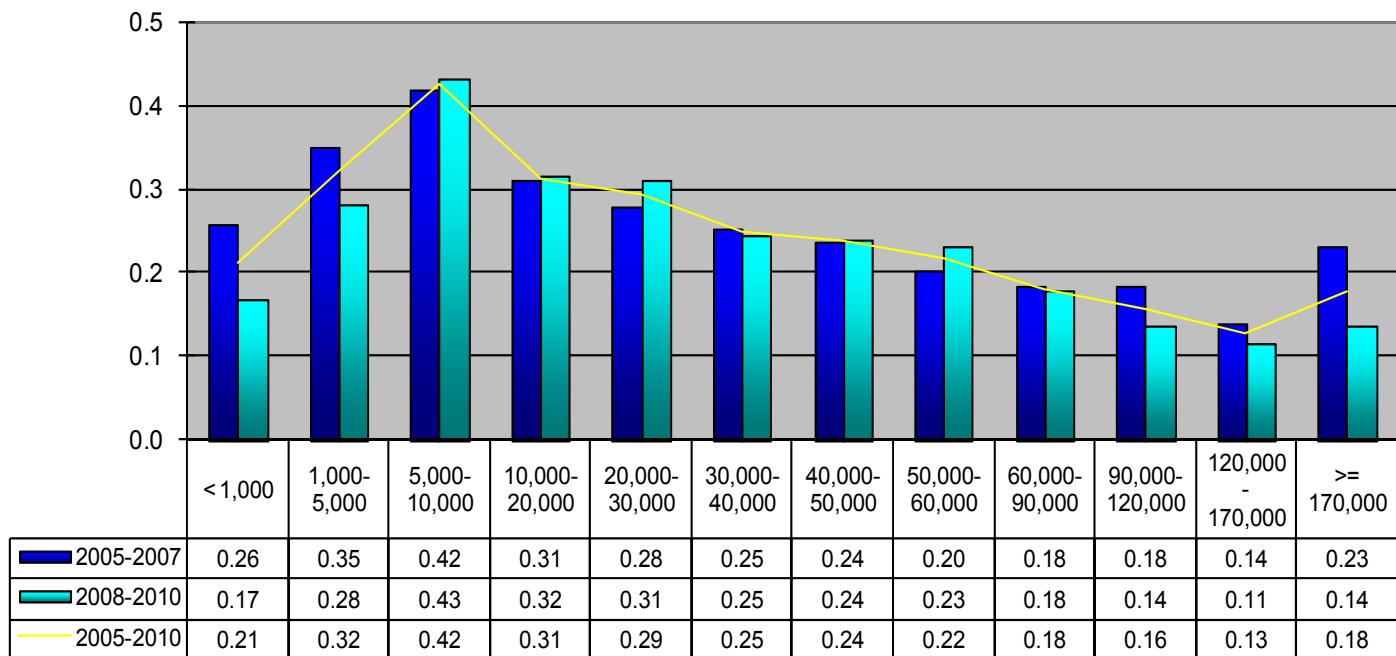
Total number of vessels
2005-09: 57,833
2010: 8,679



2010 Nordic Marine Insurance Statistics – Part 6

As of 31 December 2010 – paid+outstanding as reported, no IBNR reserve added

Claim frequency per GT size group



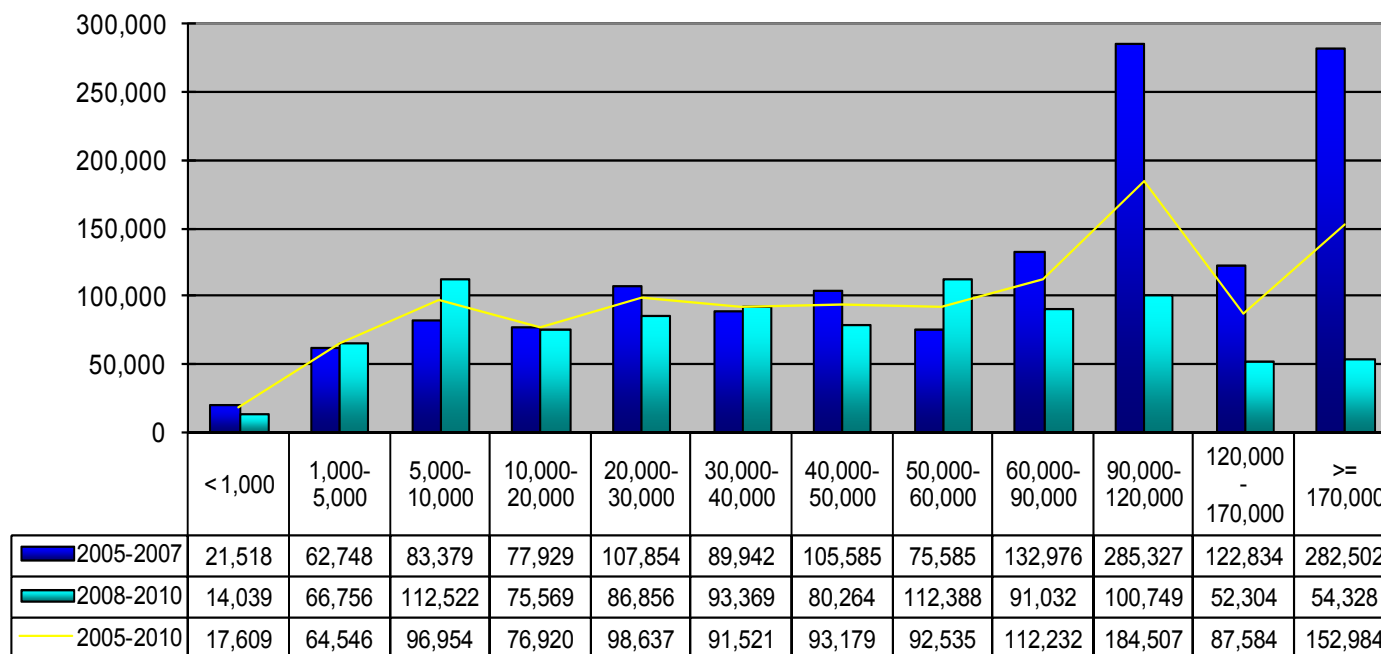
Comment: Claims < 10.000 USD account for about half of all claims. Registration of these may vary over time and in each company and will thus influence the registered frequency. In addition any increase/decrease of insurance deductibles will have impact on the registered frequency



2010 Nordic Marine Insurance Statistics – Part 6

As of 31 December 2010 – paid+outstanding as reported, no IBNR reserve added

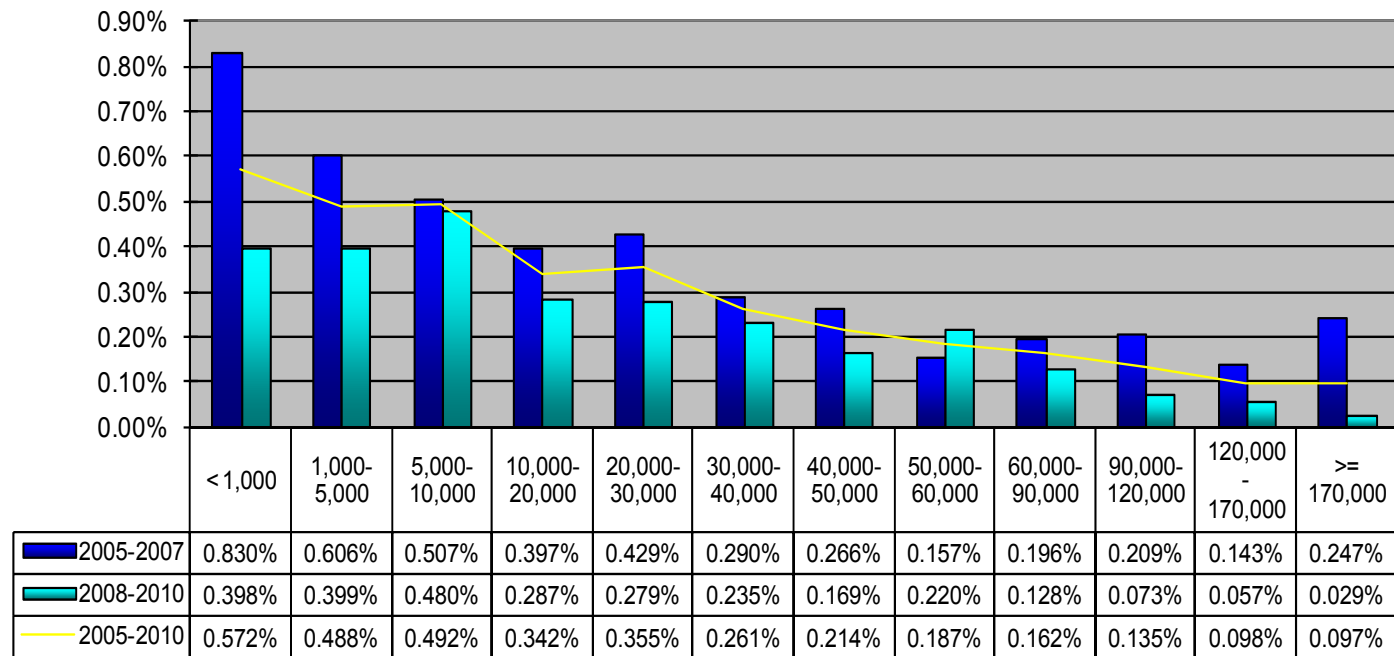
Claim per vessel per GT size group



2010 Nordic Marine Insurance Statistics – Part 6

As of 31 December 2010 – paid+outstanding as reported, no IBNR reserve added

Claim per Sum Insured per GT size group

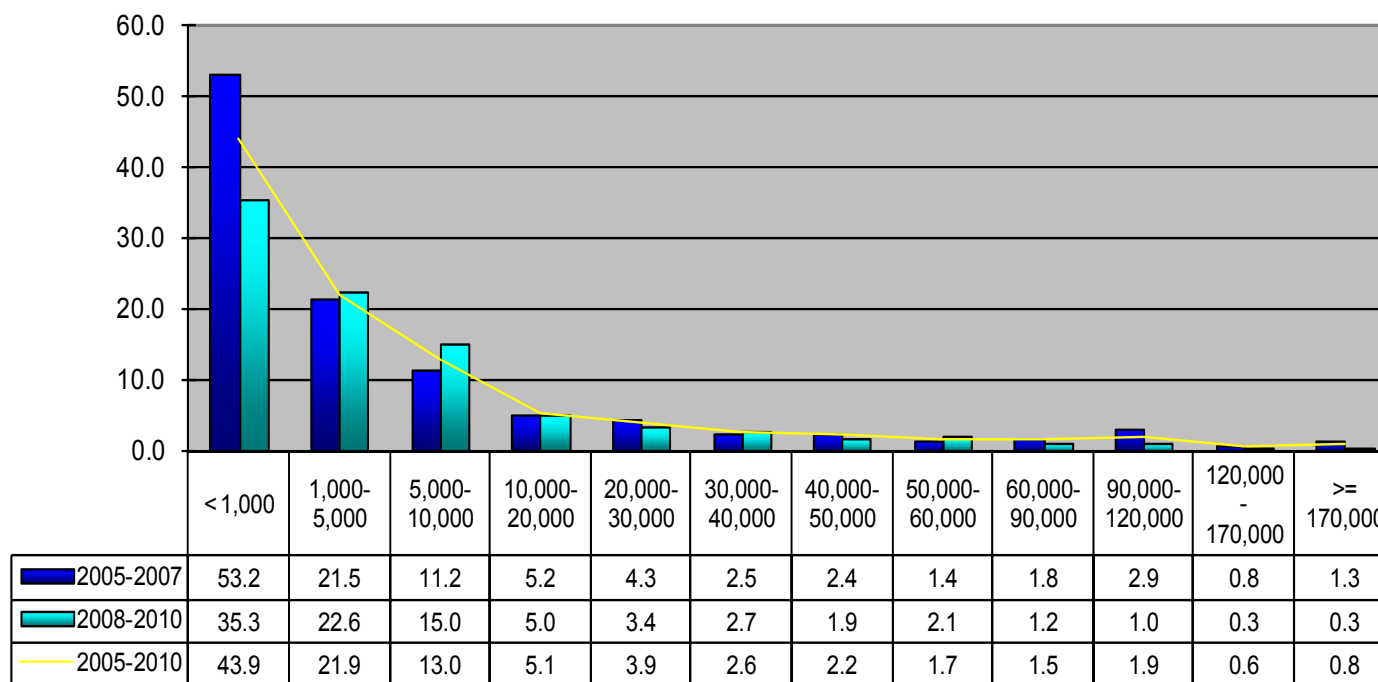




2010 Nordic Marine Insurance Statistics – Part 6

As of 31 December 2010 – paid+outstanding as reported, no IBNR reserve added

Claim per GT per GT size group

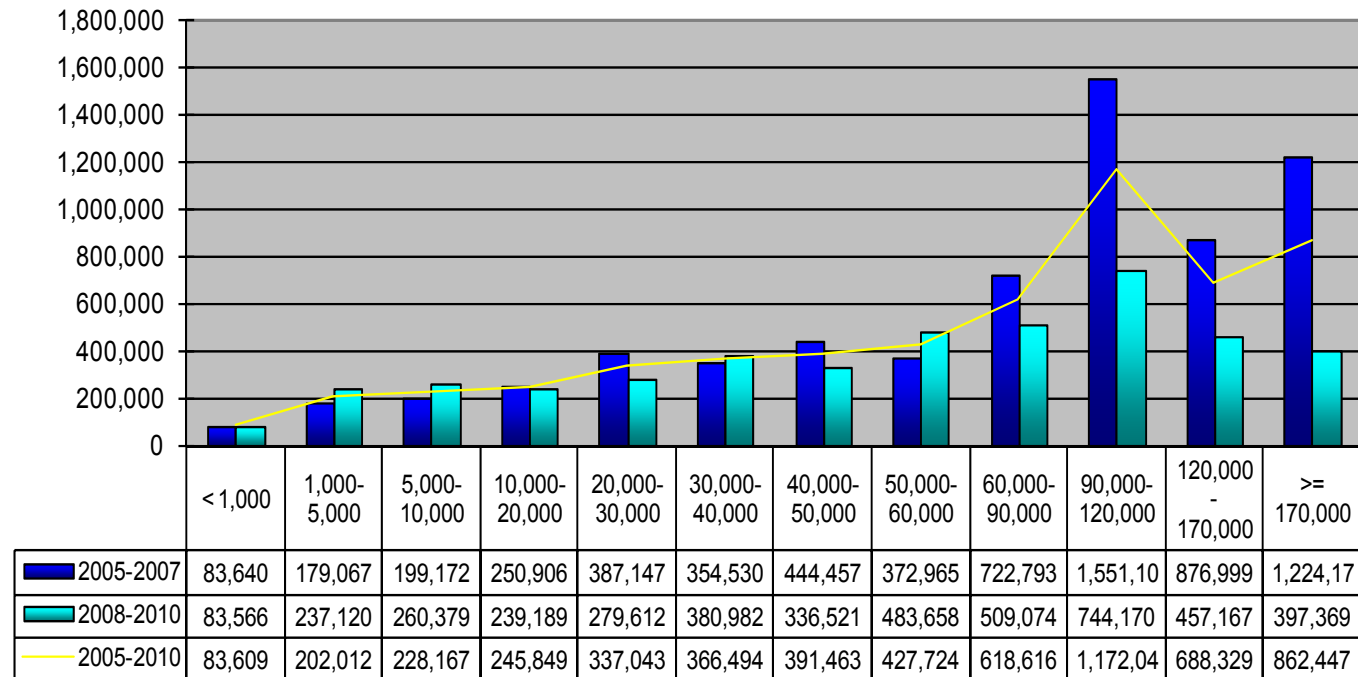




2010 Nordic Marine Insurance Statistics – Part 6

As of 31 December 2010 – paid+outstanding as reported, no IBNR reserve added

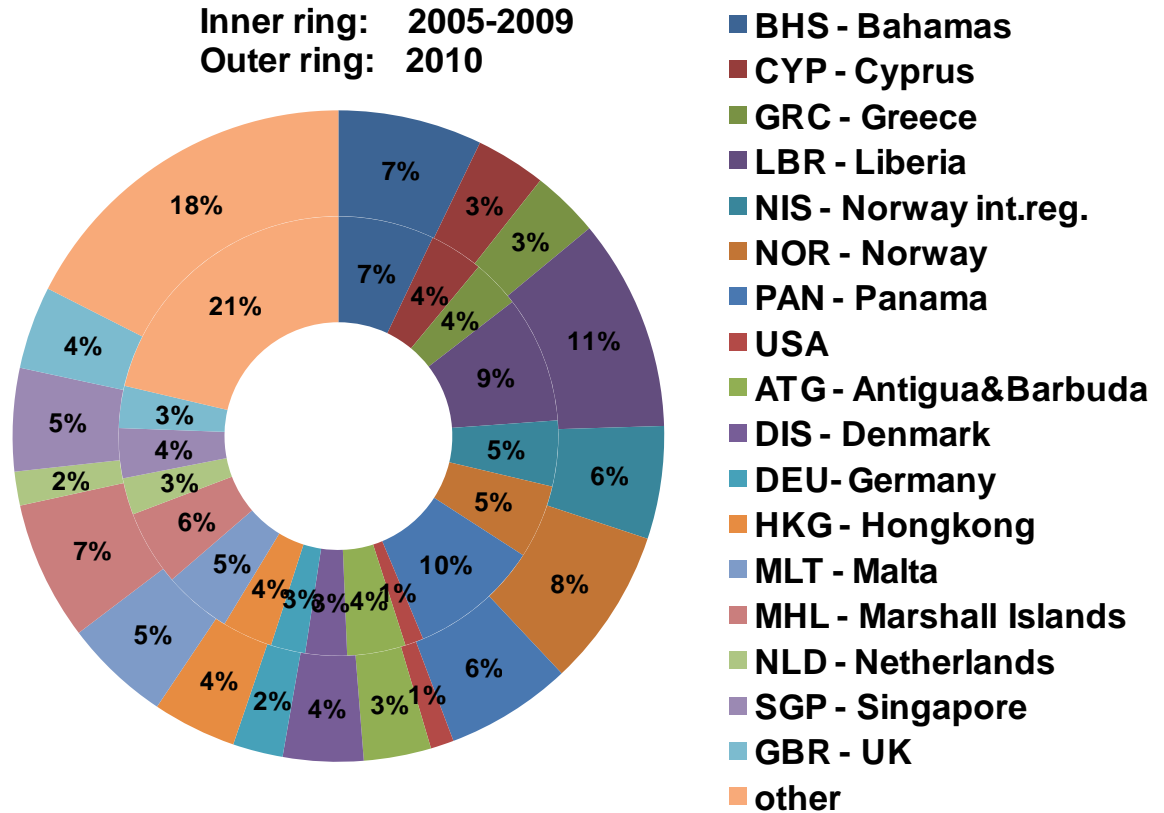
Average Claim amount per GT size group



2010 Nordic Marine Insurance Statistics – Part 7

As of 31 December 2010

Number of vessels per largest flags, by year of exposure



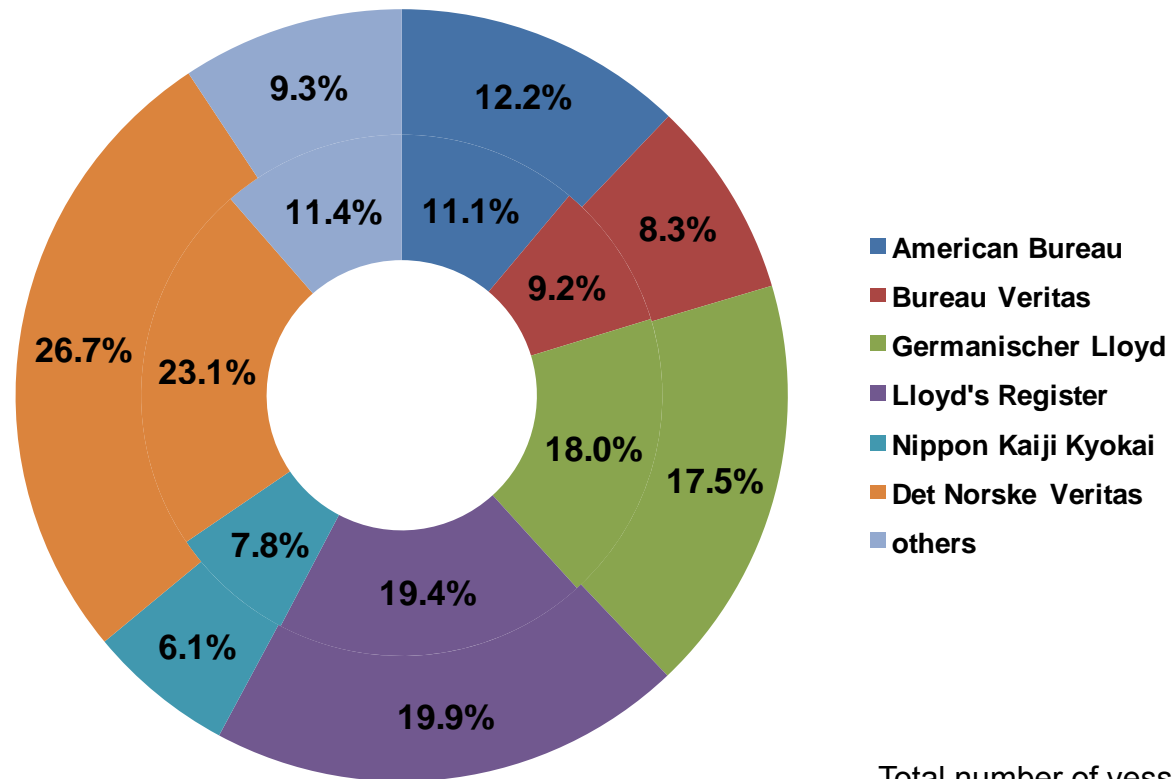
Total number of vessels
 2005-09: 57,833
 2010: 8,679

2010 Nordic Marine Insurance Statistics – Part 7

As of 31 December 2010

Number of vessels per classification society, by year of exposure

Inner ring: 2005-2009
Outer ring: 2010



Total number of vessels
2005-09: 57,833
2010: 8,679

2010 Nordic Marine Insurance Statistics – Part 8

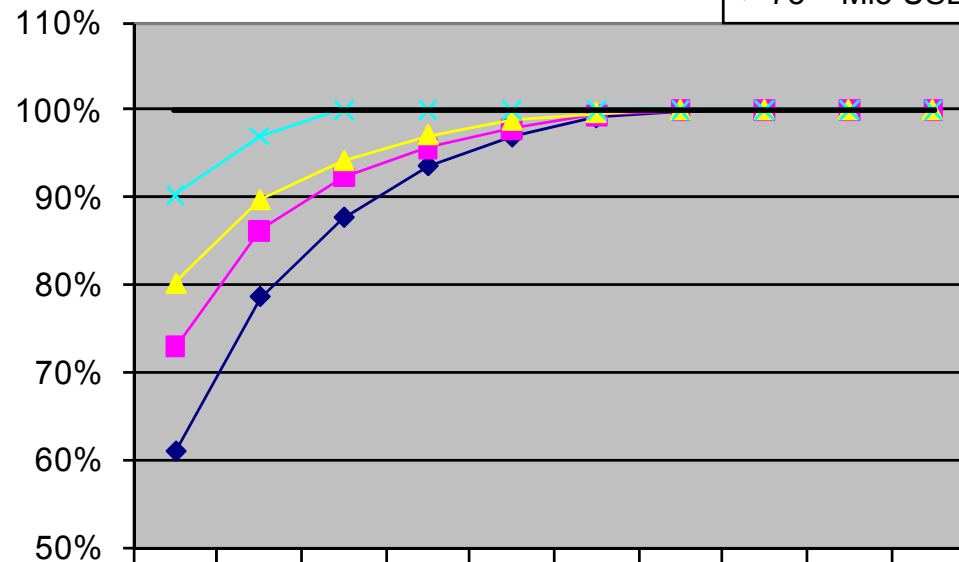
As of 31 December 2010 – paid & outstanding as reported

Based on claims occurred in years 2005-2010

Ceding company's retention of claims
(in % of total claims)

Exposure curves by Sum Insured Partial Claims only (<75%SI)

PA claims in % of all claims :
 0-5 Mio USD: 73%
 5-20 Mio USD: 85%
 20-75 Mio USD: 82%
 > 75 Mio USD: 100%



Sum Insured	10%	20%	30%	40%	50%	60%	70%	80%	90%	100 %
0-5 Mio USD	0.609	0.786	0.877	0.936	0.969	0.991	0.999	1.000	1.000	1.000
5-20 Mio USD	0.729	0.862	0.923	0.956	0.979	0.994	1.000	1.000	1.000	1.000
20-75 Mio USD	0.802	0.898	0.942	0.972	0.988	0.997	1.000	1.000	1.000	1.000
> 75 Mio USD	0.903	0.970	1.000	1.000	1.000	1.000	1.000	1.000	1.000	1.000
100%	1.000	1.000	1.000	1.000	1.000	1.000	1.000	1.000	1.000	1.000

Ceding company's retention as % of SI

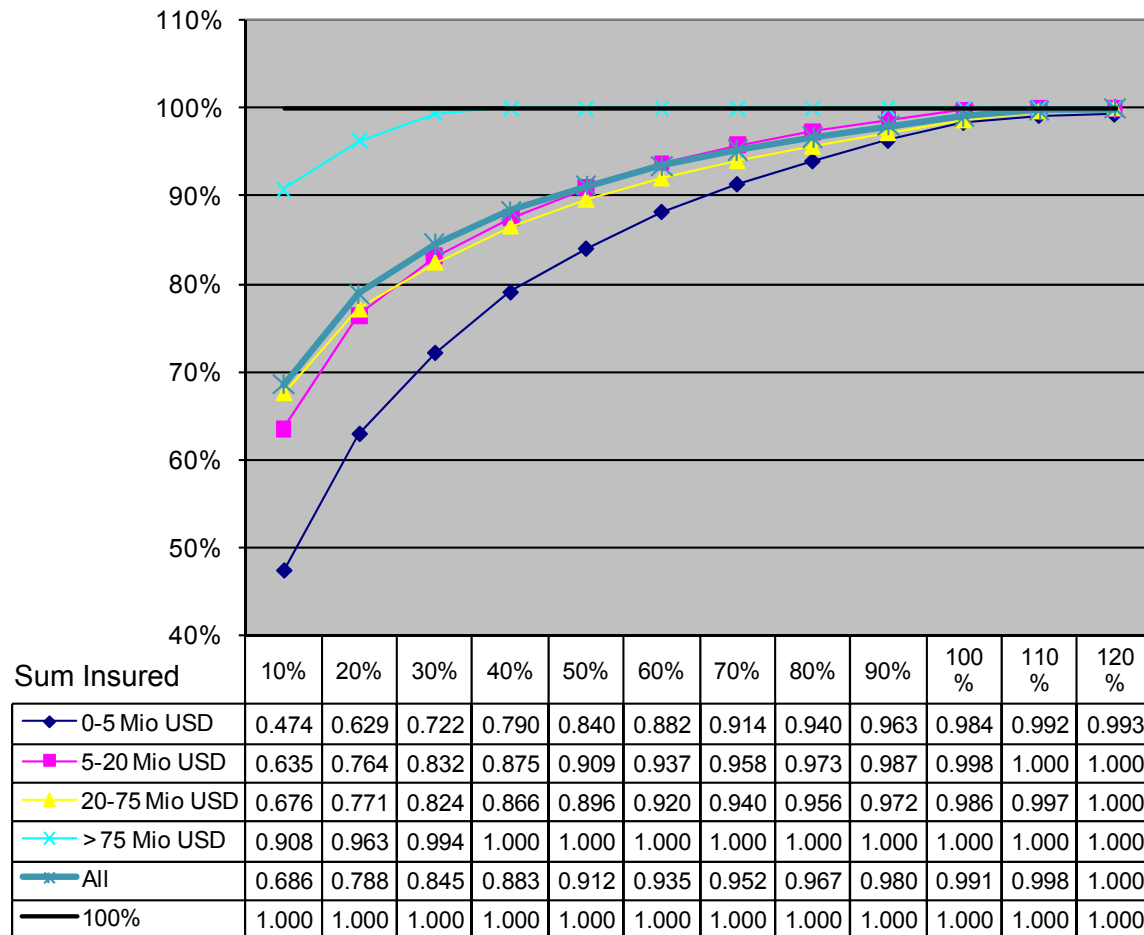
2010 Nordic Marine Insurance Statistics – Part 8

As of 31 December 2010 – paid & outstanding as reported

Based on claims occurred in years 2005-2010

Ceding company's retention of claims
(in % of total claims)

Exposure curves by Sum Insured
All claims including total losses



Ceding company's retention as % of SI



2010 Nordic Marine Insurance Statistics – Part 8

As of 31 December 2010

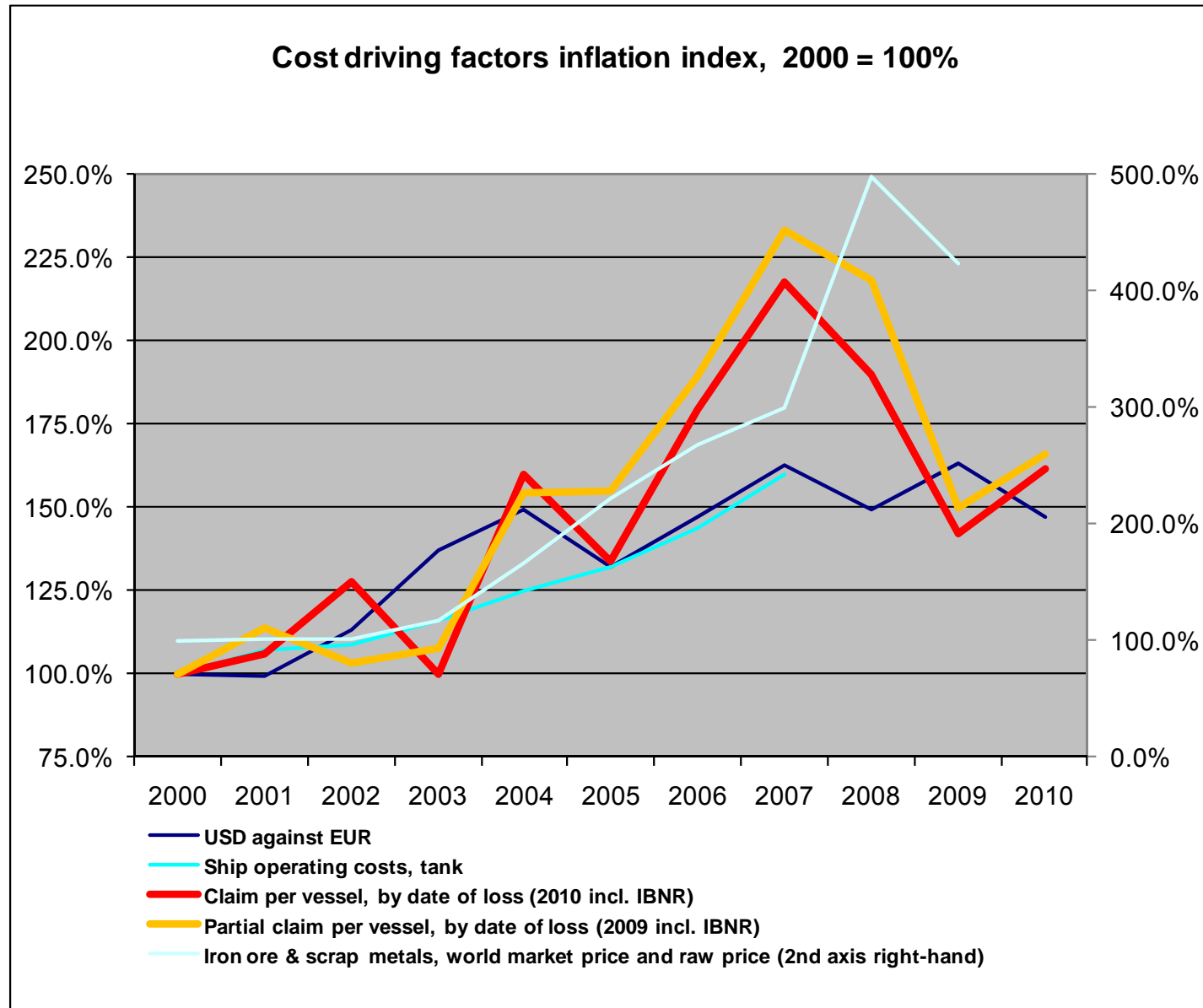
Exposure Curves

- Exposure curves are used by reinsurers to price excess of loss reinsurance.
- The curves indicate the ceding company's retained share of PA claims after ceding claims in excess of a given percentage of a vessel's sum insured.
- The curves should be applied on individual vessels or groups of vessels with similar values and written shares.
- The curves are calculated for 100% values. In applications the choice of curve should thus also be based on 100% values.
- The curves are based on USD claims amounts. Due to exchange rate fluctuations, the ratio between claim cost and insured value may deviate in the original currency.

Exposure Curves technicalities

- The curves are based on H&M covers only for vessels with valid IMO-No.
- The curves are based on the years 2005-2010
(16,199 partial claims; 16,275 claims in all)
- The curves are calculated as follows:
x = percentage retained
C = Individual claims ¹⁾
V = Vessel value
 $f(x) = \frac{\sum \min[C, V \cdot x]}{\sum C}$

2010 Nordic Marine Insurance Statistics – Part 9



Sources: Claim index: Cefor as of 31 December 2009, exchange rates: Norges Bank, Ship operation costs: Moore Stephen's, Iron Ore: IUMI



2010 Nordic Marine Insurance Statistics

Cefor marine insurance statistics publications at <http://www.cefor.no> :

- Cefor Annual Report 2010
- The 2010 Cefor NoMIS Report & The 2010 Cefor NoMIS COASTAL Report
- Half-yearly Claims Update Fact Sheet
- All Cefor statistics, including previously published reports, are available for download from the statistics section of the Cefor website:
<http://www.cefor.no/statistics/statistics.htm>

Other marine insurance statistics:

- IUMI (International Union of Marine Insurance):
Statistics issued by IUMI's Facts & Figures Committee:
<http://www.iumi.com/index.cfm?id=7165>