



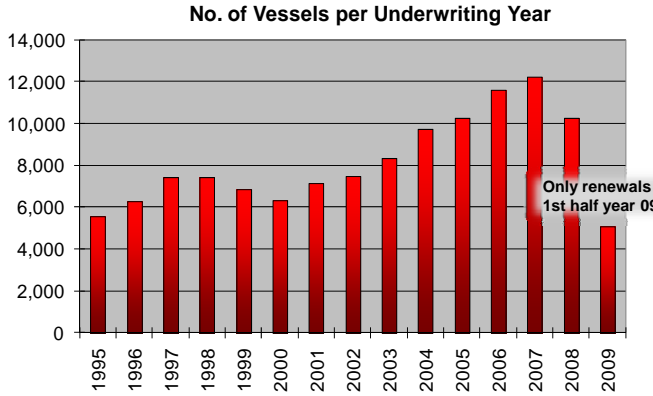
Cefor

The Nordic Association of Marine Insurers

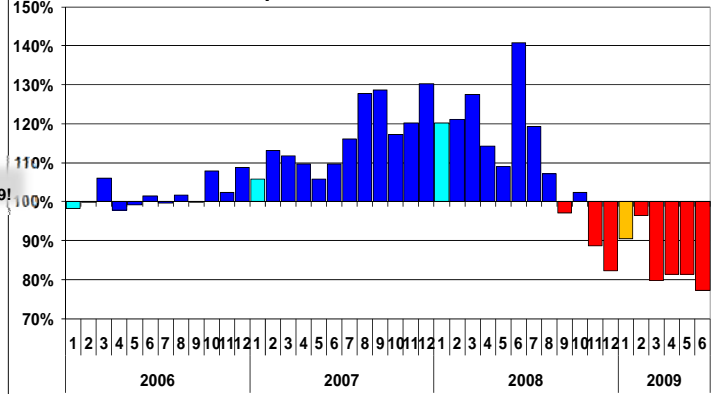
Cefor Claims Update 2009

per 30 June 2009, issued by the Cefor Statistics Forum

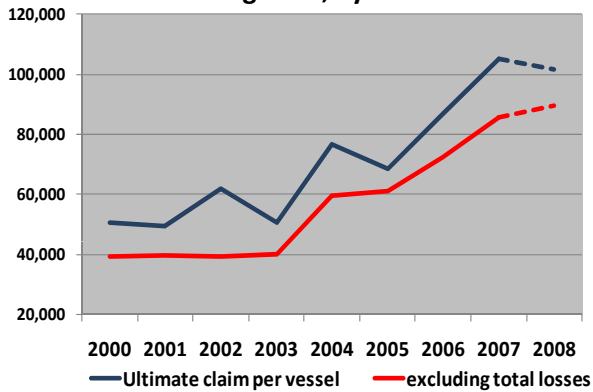
Portfolio as of 30 June 2009:



Change in insured value for renewed vessels per month of renewal

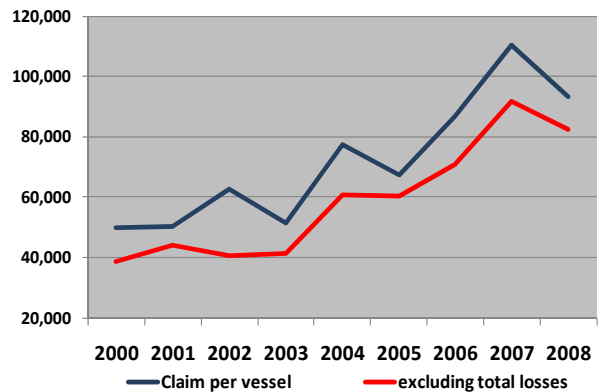


Ultimate claim cost per vessel (USD) including IBNR, by date of loss



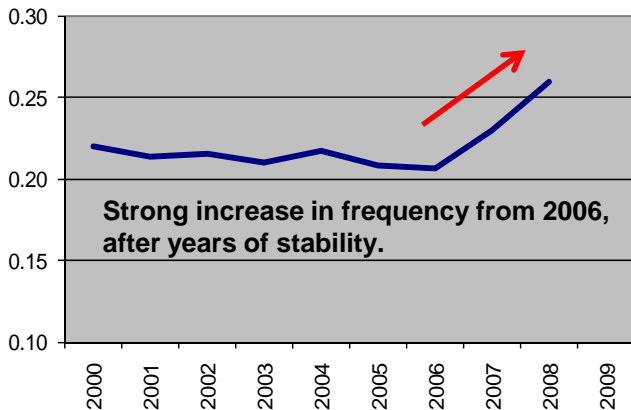
Ultimates estimated as of 31 Dec 2008

Claim cost per vessel (USD) by date of loss

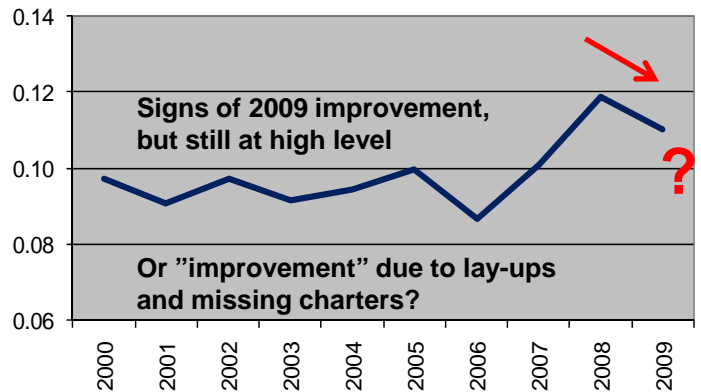


Actual reported figures as of 30 June 2009

Claim frequency - losses reported as of 4th quarter of each calendar year

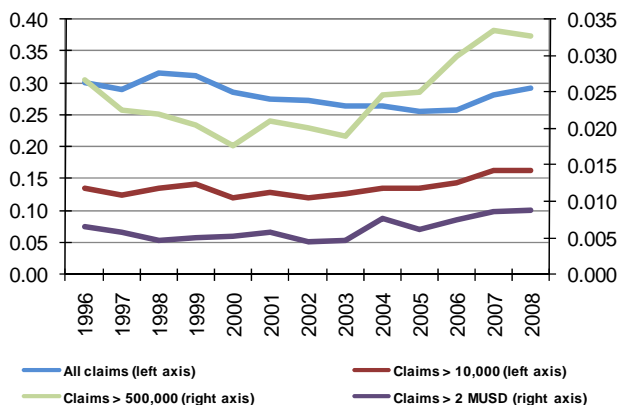


Claim frequency - losses reported as of 2nd quarter of each calendar year



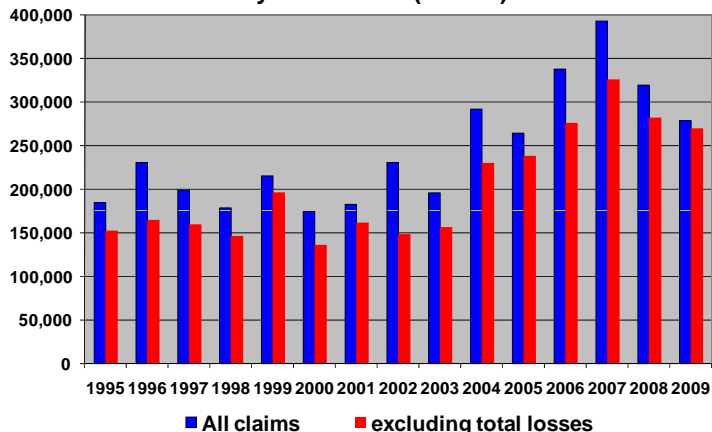
Claims frequency dependent on portfolio composition, as claim frequency varies by vessel type.

Claims frequency - Claims excess a certain level by date of loss



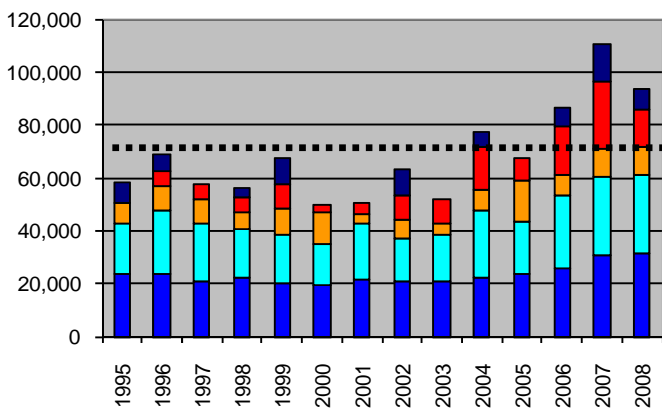
2006-2008 increase in the frequency of claims, especially for major claims.

Average claim cost per individual claim, by date of loss (in USD)



Individual claim cost doubled from 2003 to 2007, but down again from 2008.

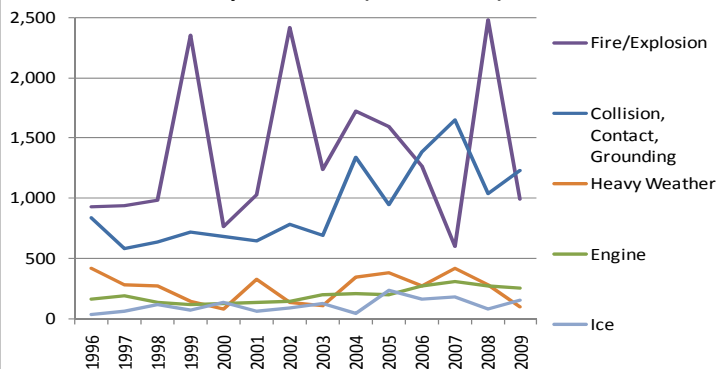
USD Claim per vessel, by date of loss



Same impact of claims below 10 MUSD in 2007 and 2008.

But in 2008 less impact of major claims excess 10 MUSD.

Av. individual claim amount per type of casualty by date of loss (in USD 1,000)



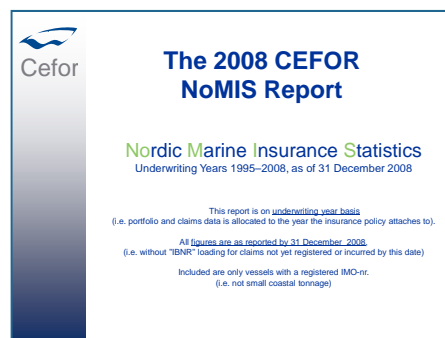
Check also: Claims Statistics from the Nordic Marine Insurance Statistics database (NoMIS) issued in spring 2009, data as of 31 December 2008:



← CEFOR Annual Report 2008, p.10-16

The 2008 CEFOR NoMIS Report →

Visit us at www.cefor.no for more information!



Legal disclaimer: CEFOR provides the material contained in this Fact Sheet for general information purposes only. CEFOR accepts no responsibility and shall not be liable for any loss which may arise from reliance upon the information provided. This information is not intended for distribution to, or use by, any person or entity in any jurisdiction or country where such distribution or use would be contrary to local law or regulation.