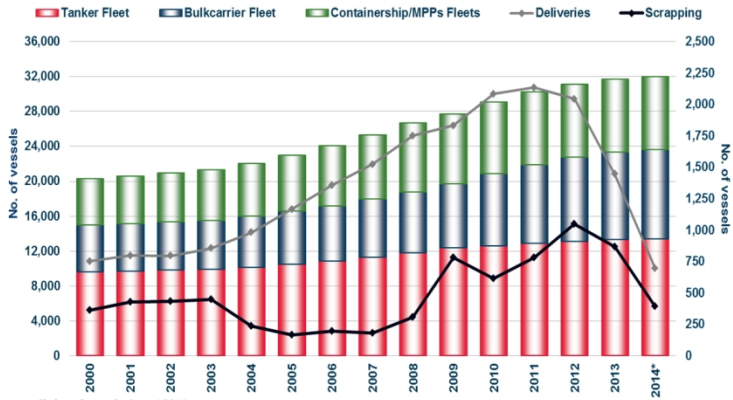


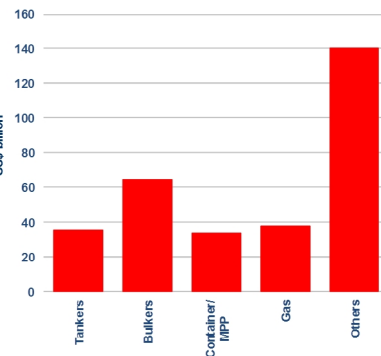
## Tanker, Bulkcarrier, Containership and Multipurpose Fleets



Source: Clarkson Research, August 2014  
 Note (1): Includes all vessels in these categories above 100 GT.  
 Note (2): All fleet totals are on the left-hand axis and deliveries and scrapping figures are on the right hand axis. Fleet totals are as at end year; deliveries and scrapping figures are full year totals.  
 Note (3): \* 2014 statistics are correct as of August 1, 2014.

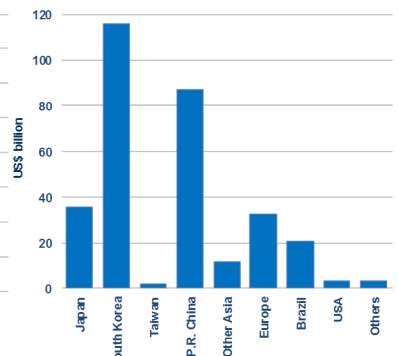
## Value of Orderbook

Value of Newbuildings (by Vessel Type)



Source: Clarkson Research, August 2014

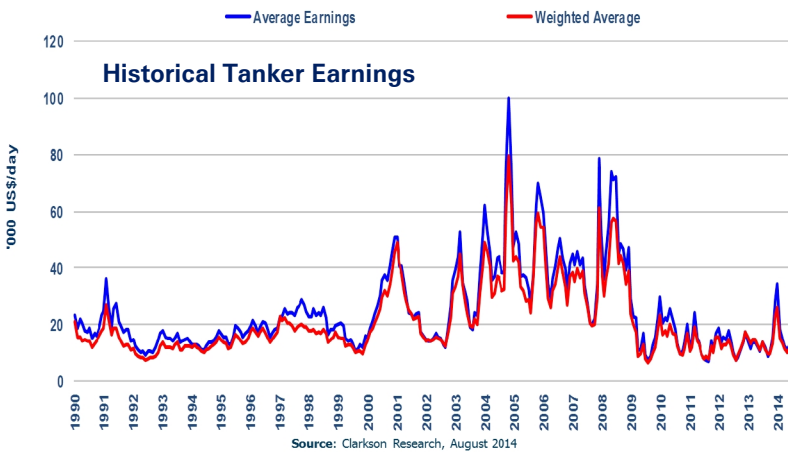
Value of Newbuildings (by Country/Region of Build)



Source: Clarkson Research, August 2014

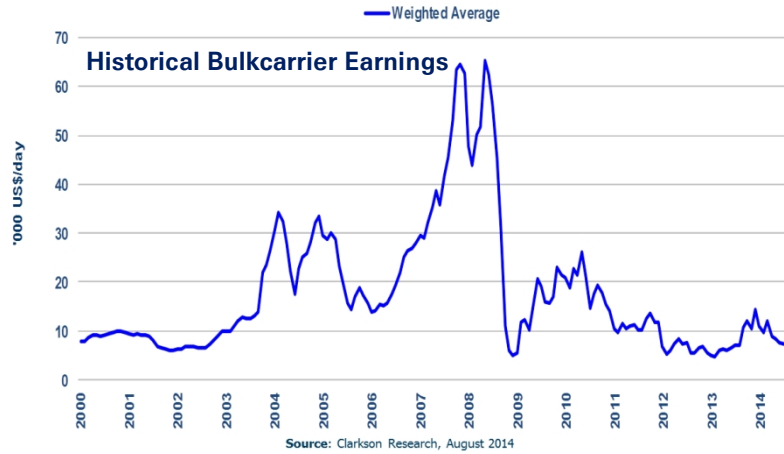
Total value of Newbuilding orderbook (1st August 2014): US\$311.8 bn (at contracted values).

## Tanker Freight Rates



Source: Clarkson Research, August 2014

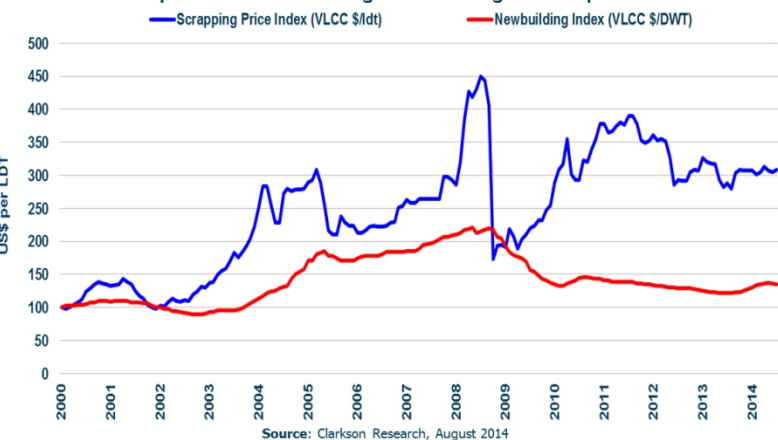
## Bulkcarriers Freight Rates



Source: Clarkson Research, August 2014

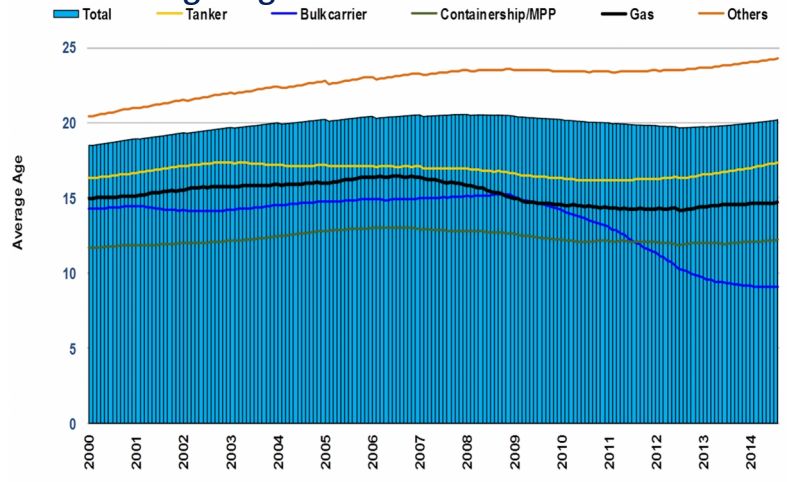
## Scrapping Prices

Comparison between Average Newbuilding and Scrap Prices



Source: Clarkson Research, August 2014

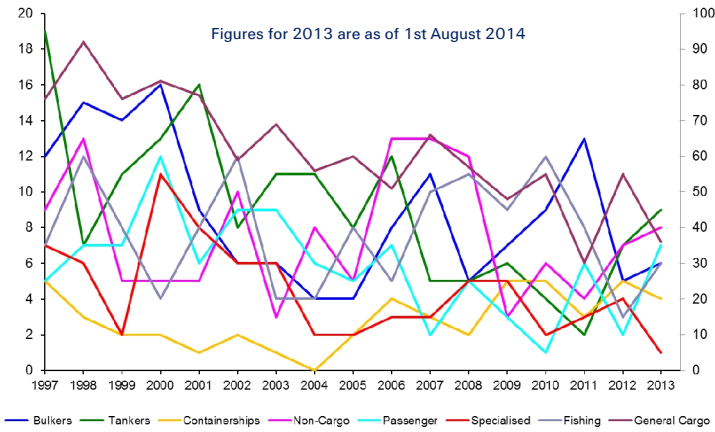
## Average Age of World Fleet 2000-2014



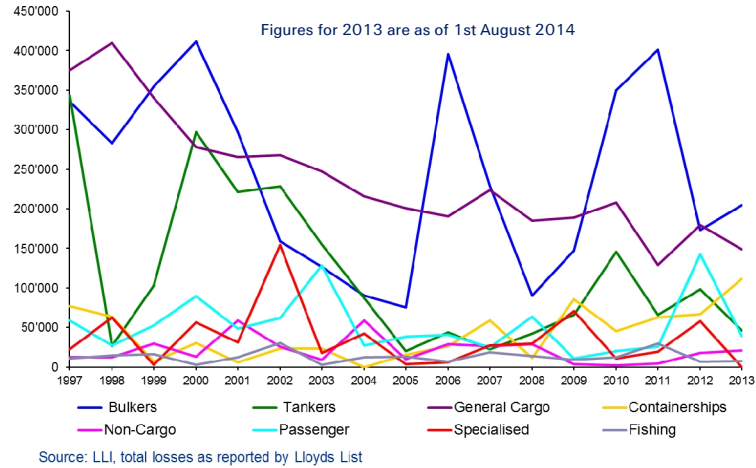
Source: Clarkson Research, August 2014

Note (1): Includes all vessels in these categories above 100 GT.  
 Note (2): Average age is calculated using number of vessels. Calculations are based on year and month of build.

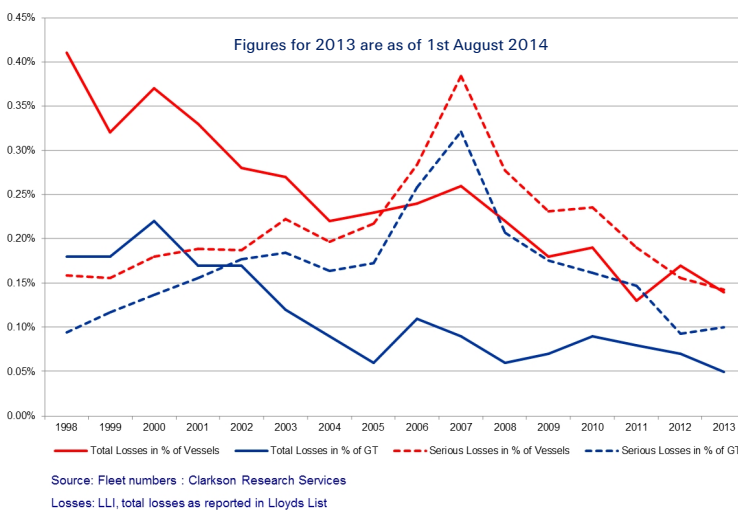
### Total Losses 1997-2013 By Number (Vessels > 500 GT)



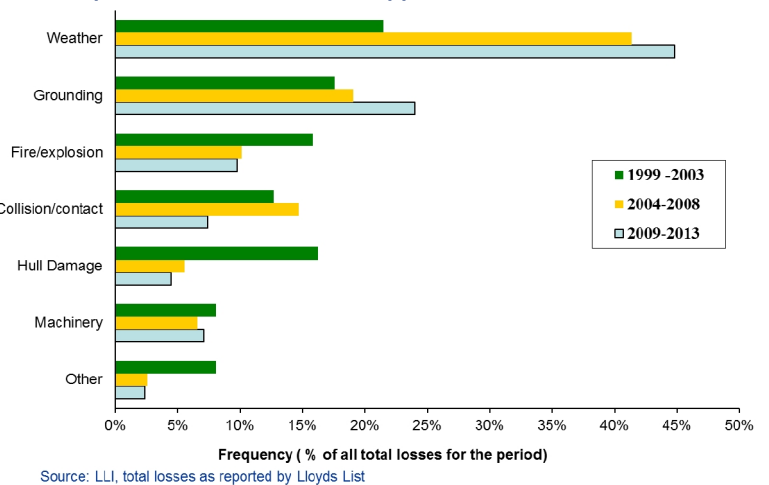
### Total Losses 1997-2013 By Tonnage (Vessels > 500 GT)



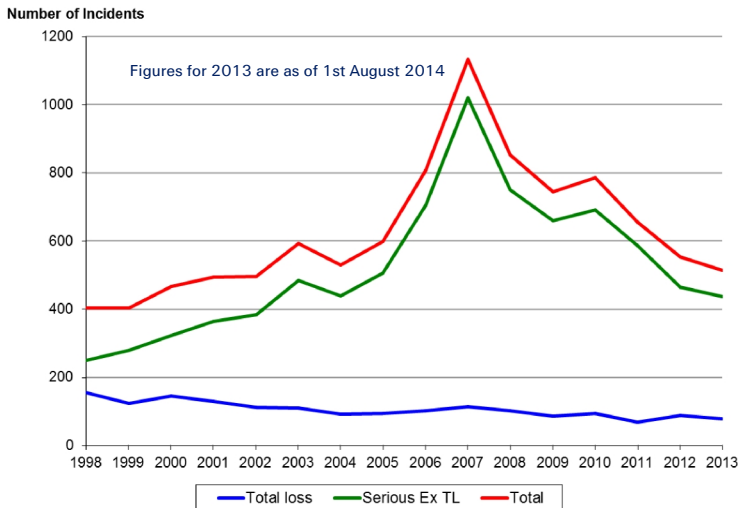
### Total & Serious Losses 1998-2013 As Percentage of World Fleet (Vessels > 500 GT)



### Total Losses 1999-2013 By Cause, All Vessel Type (Vessels > 500 GT)



### Serious and Total Losses 1997-2013 By Number (Vessels > 500 GT)



### Serious Losses 1999-2013 By Cause, All Vessel Type (Vessels > 500 GT)

